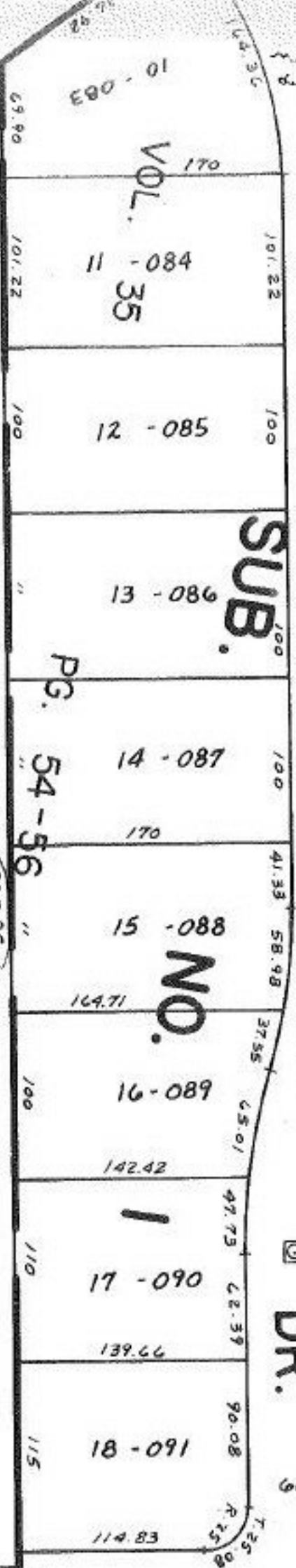


STONEY BROOK (900)

DR.



#14133
T.M.
A. 21.81

APPROVED
LORAIN CO.
MAP DEPT.

DATE 4-3-91

PAGE 4-00-019-F

BY *Carroll*

VOID AFTER

702.19
-060
1.46A
-025
2.00A
-023
0.28A
-024
0.28A
-028
0.48A

96.15
93.08
60
60
96

-155
2.29A
-057
2.42A
-156
0.13A
936.03
786.03
-056
1.01A
736.07
-055
1.01A
736.12
936.12
936.19

106.69
112.69