

006  
32.00A

1945.02

T

23

- 001  
54.59A

- 002  
64.41A

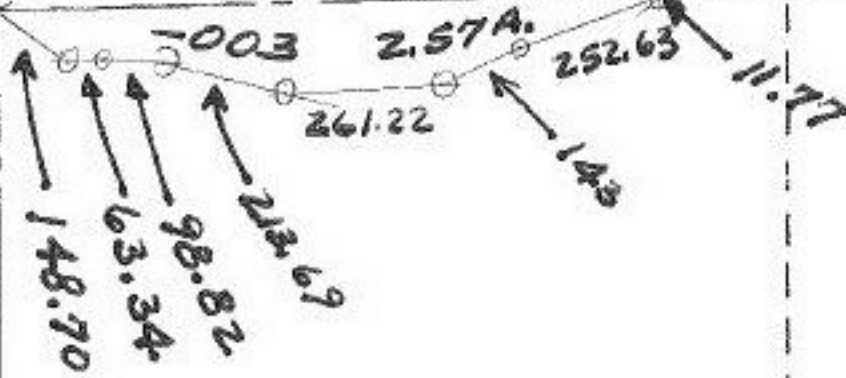
- 007  
29.50A

66.00  
2.57  
63.43 A

R

1125.81

2657.82



LORAIN COUNTY MAP DEPT.

002  
6.50A  
P. P. No.

LORAIN COUNTY MAP DEPT.  
P. P. No.

14130  
~~001~~

~~66.00A - Dist~~  
~~65.75A - Dist~~

- 004  
63.43A.

26

- 002  
66.00A

#14130

T.M.  
4-23-81

APPROVED LORAIN CO. MAP DEPT.	
DATE	4-6-81
PAGE	13-D
BY	J. Collett
VOID AFTER	14130

GRANGE - RICHFIELD