

#14115

605.5

- 003
36.60A.

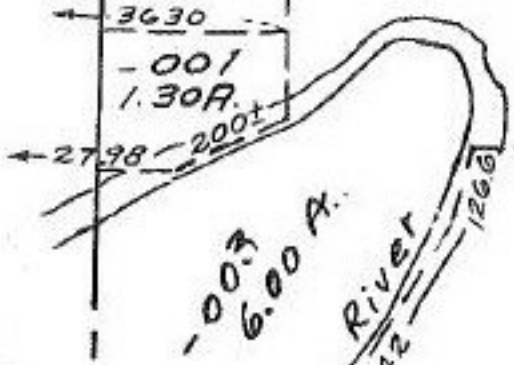
410.50

- 004
23.40A.

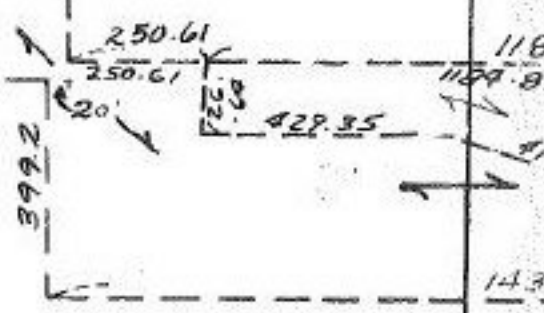
2970
Pt. 5.32R
Pt. 4.91R
SEE
12-F
Pt. 10.00R
3630
- 001
1.30A.

- 011
31.70A.

- 005
10.00A.



1283.9



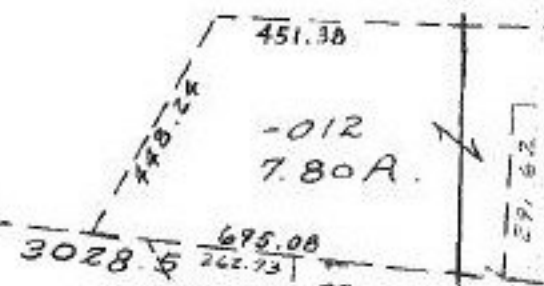
- 013
32.89A.

50

- 012
7.80A.

264.94

2333.42



APR 17 1981

#14115

Pt. 12-00-050-001-021
Pt. 13-16-A
17.29A.

- 016
49.08A.

APPROVED
LORAIN CO.
MAP DEPT.
DATE 4-1-81
PAGE 12-G
BY Carolyn
VOID AFTER

