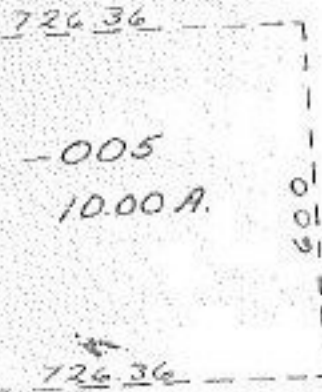


#14109

4



-006  
31.13 A

600

218.05

702.54

1006.89  
-007  
5.07 A  
1000.71

-008  
4.93 A

#14109

APPROVED	
LORAIN CO.	
MAP DEPT.	
DATE	3-25-81
PAGE	8-B
BY	T.M. Moir
VOID AFTER	

T.M.  
4-22-81

-004  
19.31 A

C

Garfield Rd.

THIS 500 IS MEASURED FROM THE NORTH LINE OF A ROW TO CLEV (ELYRIA) & WESTERN RAILWAY CO. PER DEED EG/520

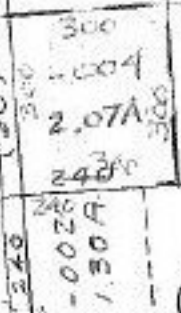
BAIRD

R

A

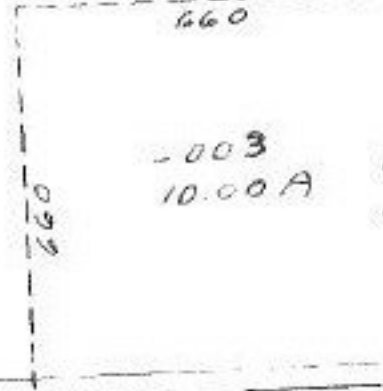
~~-001~~  
~~61.60 A~~  
-005  
7 59.53 A

61.60  
2.07  
59.53  
2.07  
61.60



GARFIELD

(60)



-003  
10.00 A



-002  
3.10 A

-016  
3.17 A

SEE 8-F