

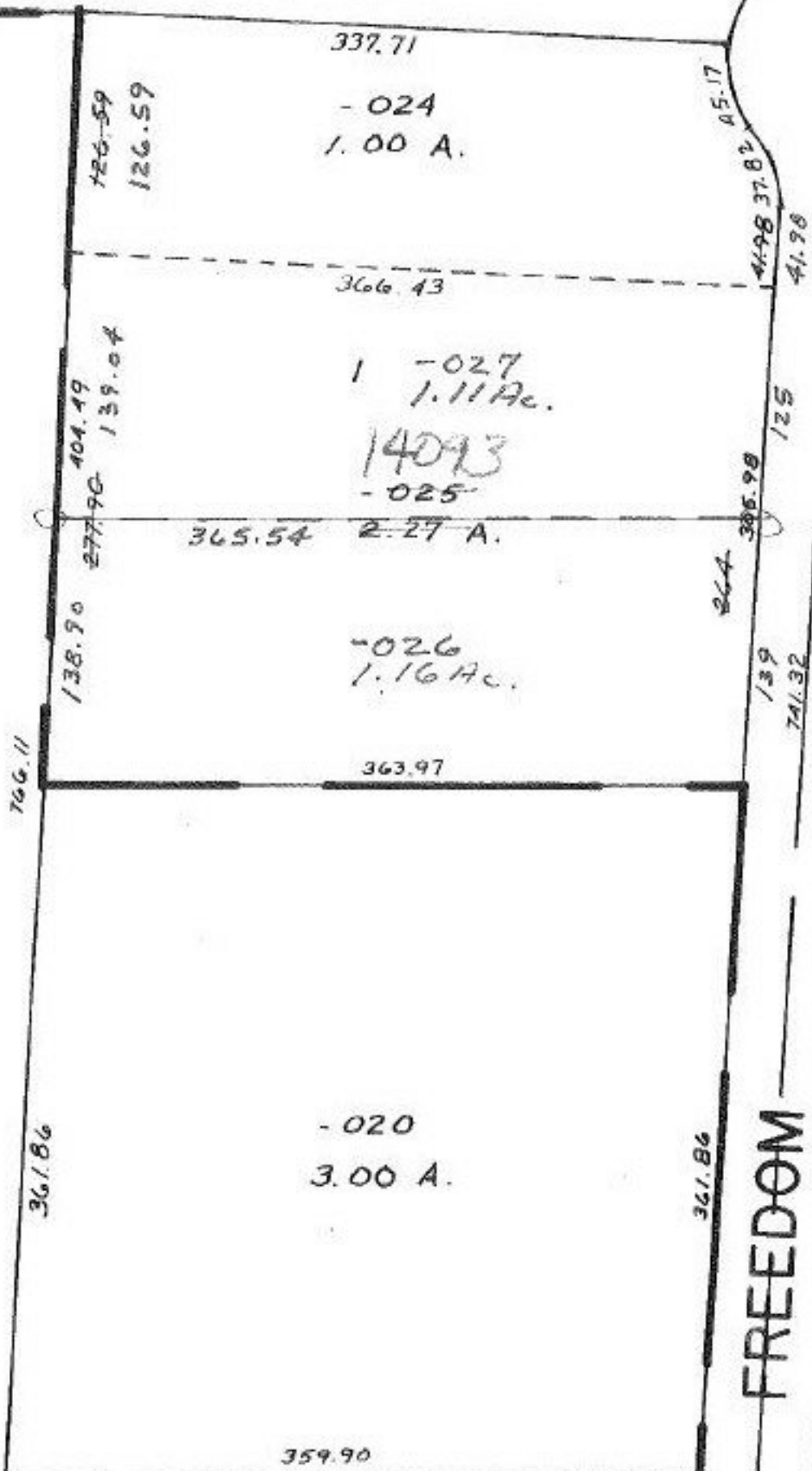
INDUSTRIAL

PARK

016-000-004
B A.

PGS. 17 & 18

40.8/4.3
 265.45
 139.04
 305.98
 180.98
 25.00
 138.90
 126.59
 265.49
 139
 41.98
 180.98



140 93

APPROVED
LORAIN CO.
MAP DEPT.
DATE 3-17-81
PAGE 6-25
BY <i>T. M. ...</i>
REVISION

T.M.
4-21-81

Pt. - 008

RD.

816.28
 361.86
 361.86
 359.90
 366.43
 363.97
 337.71
 126.59
 126.59
 138.90
 277.90
 404.19
 139.04
 139
 41.98
 180.98
 25.00
 40.8/4.3
 265.45
 139.04
 305.98
 180.98
 25.00
 138.90
 126.59
 265.49
 139
 41.98
 180.98
 110
 115
 225
 EX