

E 16400025-B
1068
COMBINATION

-003

102

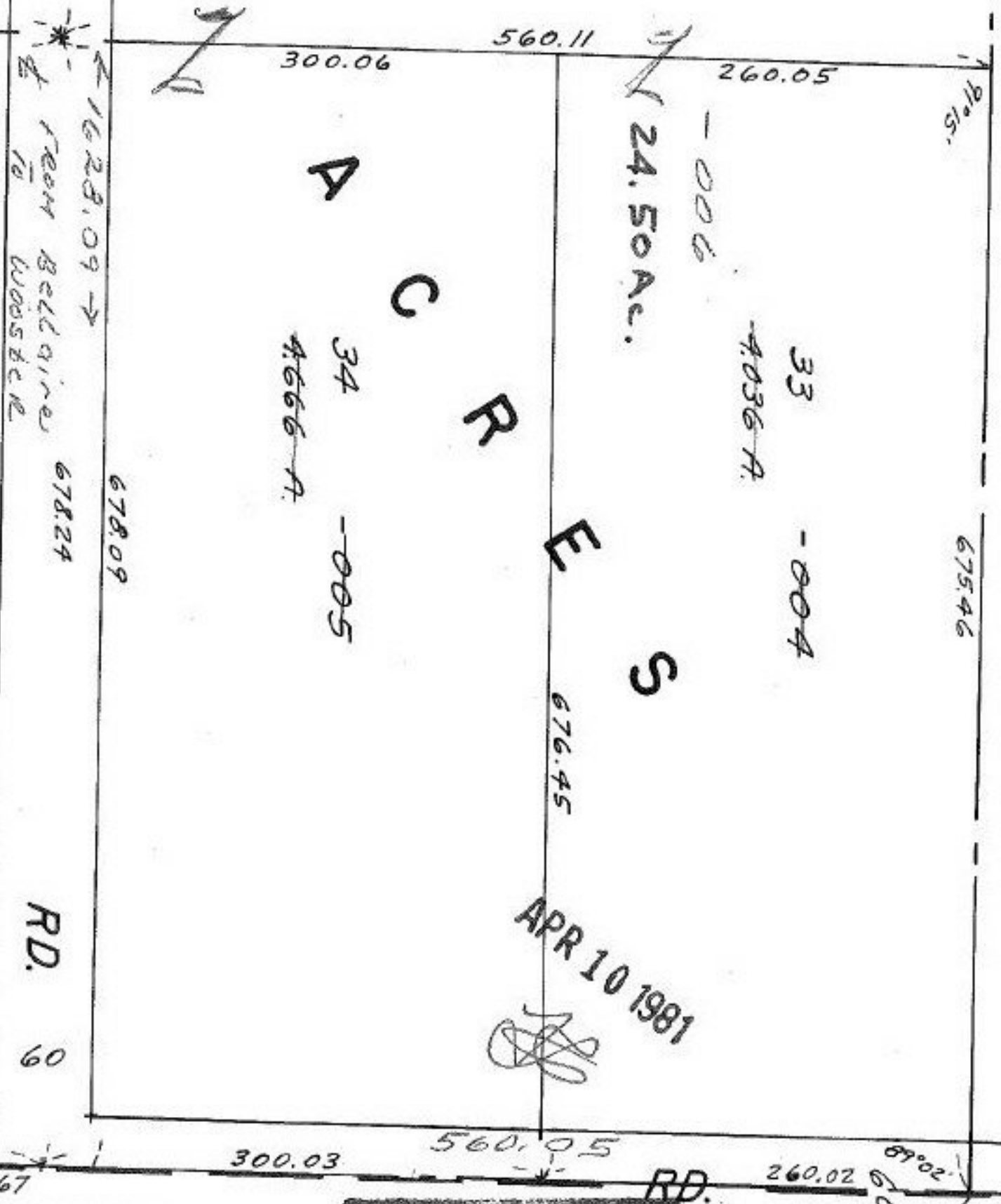
35
3.857 A.

300

300

9

06



675.46

33 -004

4.036 A.

24.50 Ac.

676.45

APR 10 1981

34 -005
4.666 A.

678.09

678.24

678.39

RD. 60

89°02'

89°02'

260.02

560.05

300.03

1111.67

SEE # 17748 A
OR uncombination

#14112

APPROVED
LORAIN CO.
MAP DEPT.
DATE 3-30-81
PAGE 16-00-036B
BY [Signature]
VOID AFTER

#14068

APPROVED
LORAIN CO.
MAP DEPT.
DATE 3-4-81
PAGE 16-00-036B
BY [Signature]
VOID AFTER
14068