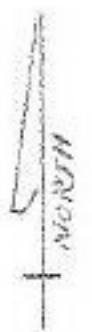
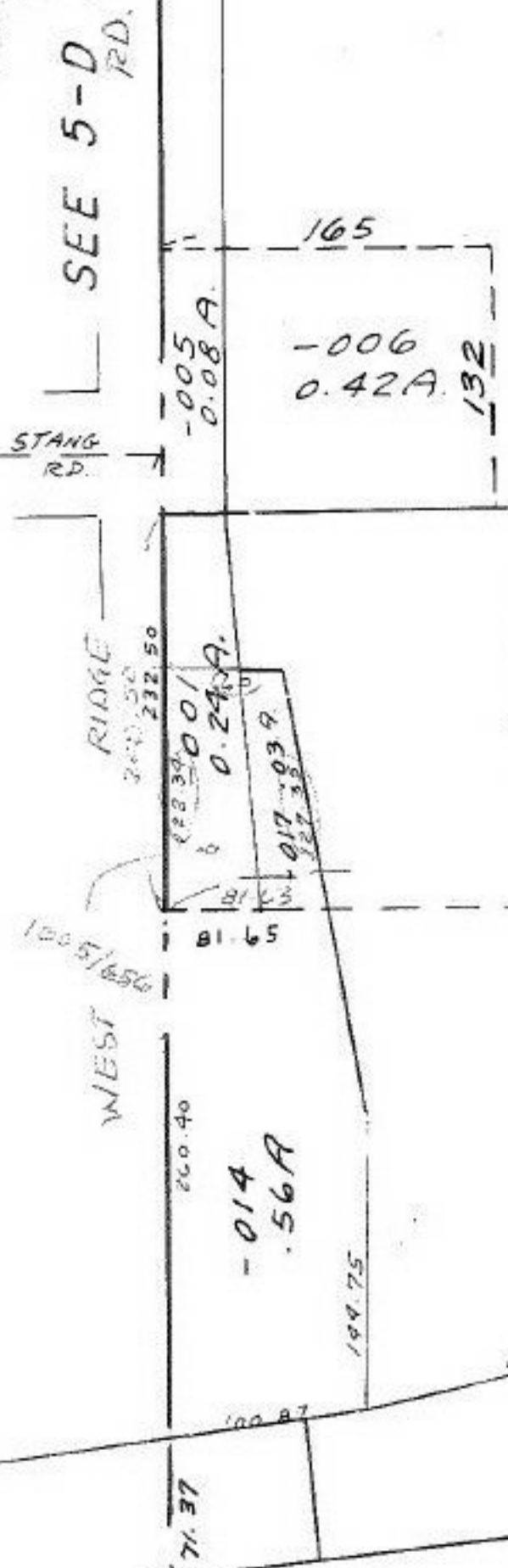


- 019
14.44 A.

CALCULATION FROM SURVEY DEED 1176/563 BY C.E. PENFOUND
GIVES A TOTAL OF 3.66 A., WHICH INCLUDES -001 & 017.
WHEN THESE 2 R/W'S ARE SUBTRACTED THE
REMAINING ACREAGE IS 3.39 A.



#14057

APPROVED
LORAIN CO.
MAP DEPT.

DATE 02-23-81

PAGE 6-55

BY T. McRae

VOID
AFTER

#14057

STA 540