

(LA)

- 010
50.32 A.

1322
1376

- 009
10.63 A.

1320.68

1320.68
1115.69

- 006 7.17 A.

BIGGS 118.35

275.02
- 005
1.27 A.
273.95

#14041

1308.45

(60)

90°52'

721.88

812.56

- 011
13.48 A.

782.80
- 010
4.15 A.

3.44 A - 008
723.84

90°32'

619.12

90°32'

625.85

644.97

702.83

- 002
21.15 A. Dup.
20.48 A.-D.

702.83

- 003
20.28 A.

1427.65

- 004
20.52 A.

1428.62

- 005 3.91 A.

- 001
17.46 A.

89°23'

1269.56

35
3172.54

619.12

89°23'

625.85

89°28'

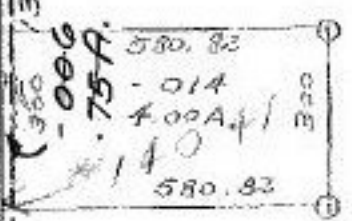
658.01

90°05'

- 007
82.52 A.

- 015
79.27 A.

- 004
16.73 A.



#14041

APPROVED
LORAIN CO.
MAP # 15-022-28
DATE 2-12-81
PAGE 15-0
BY <i>Cudwin</i>
VOID AFTER 14041

APR 10 1981

3185

LINE
1245.48

A

B