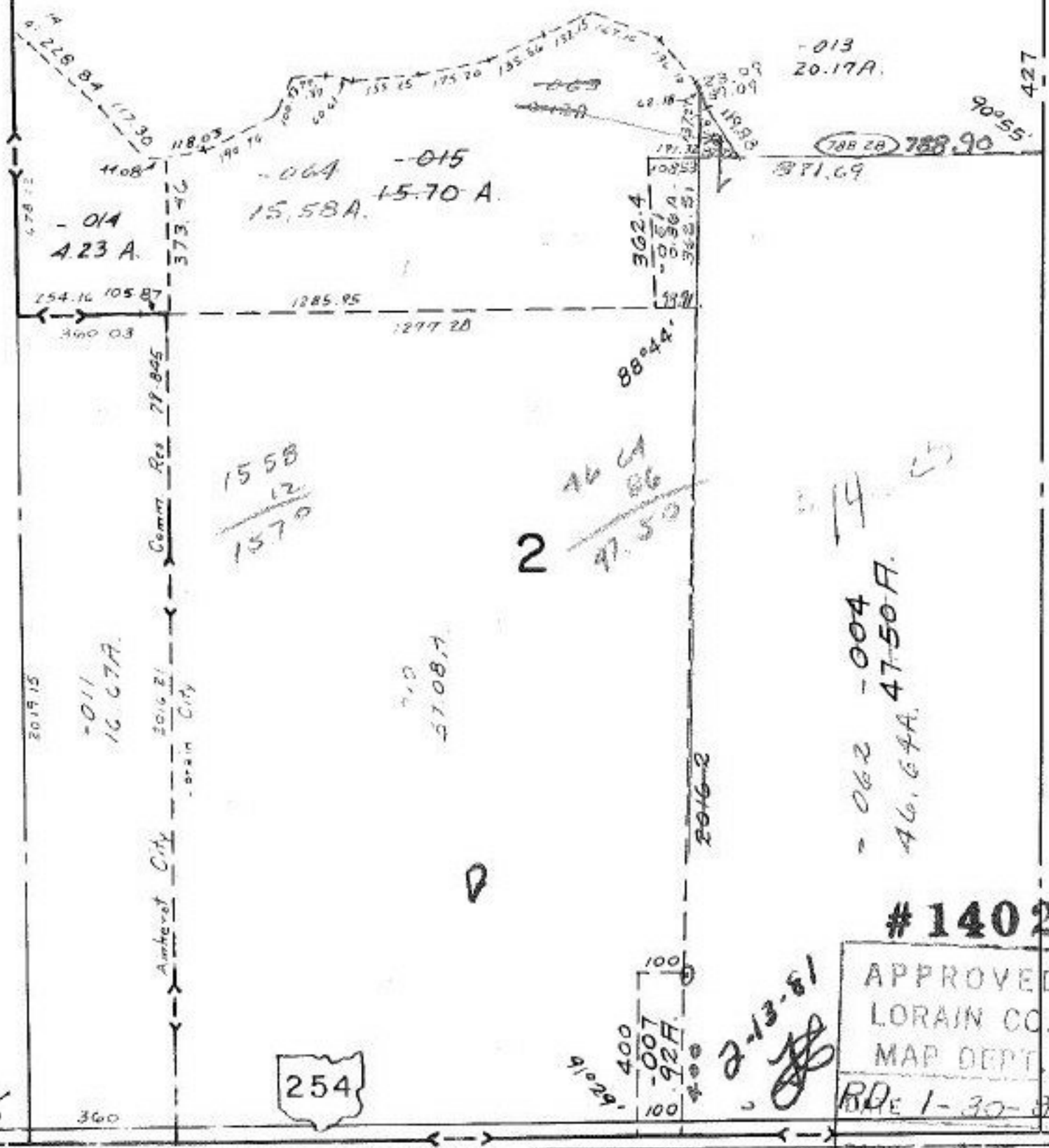


SEE

#14025

RD.

SEE 2-02-001-B



#14025

APPROVED
 LORAIN CO.
 MAP DEPT.
 RDE 1-30-81

PAGE 2-1
 BY Carolyn
 VOID AFTER 14025

Cop:

S 1, 2, 9, 10, 11, 12, 19, 20, 21
 S 1, 5, 6