

14019

14019

062
11-80-A
066
11-64 A

393.31

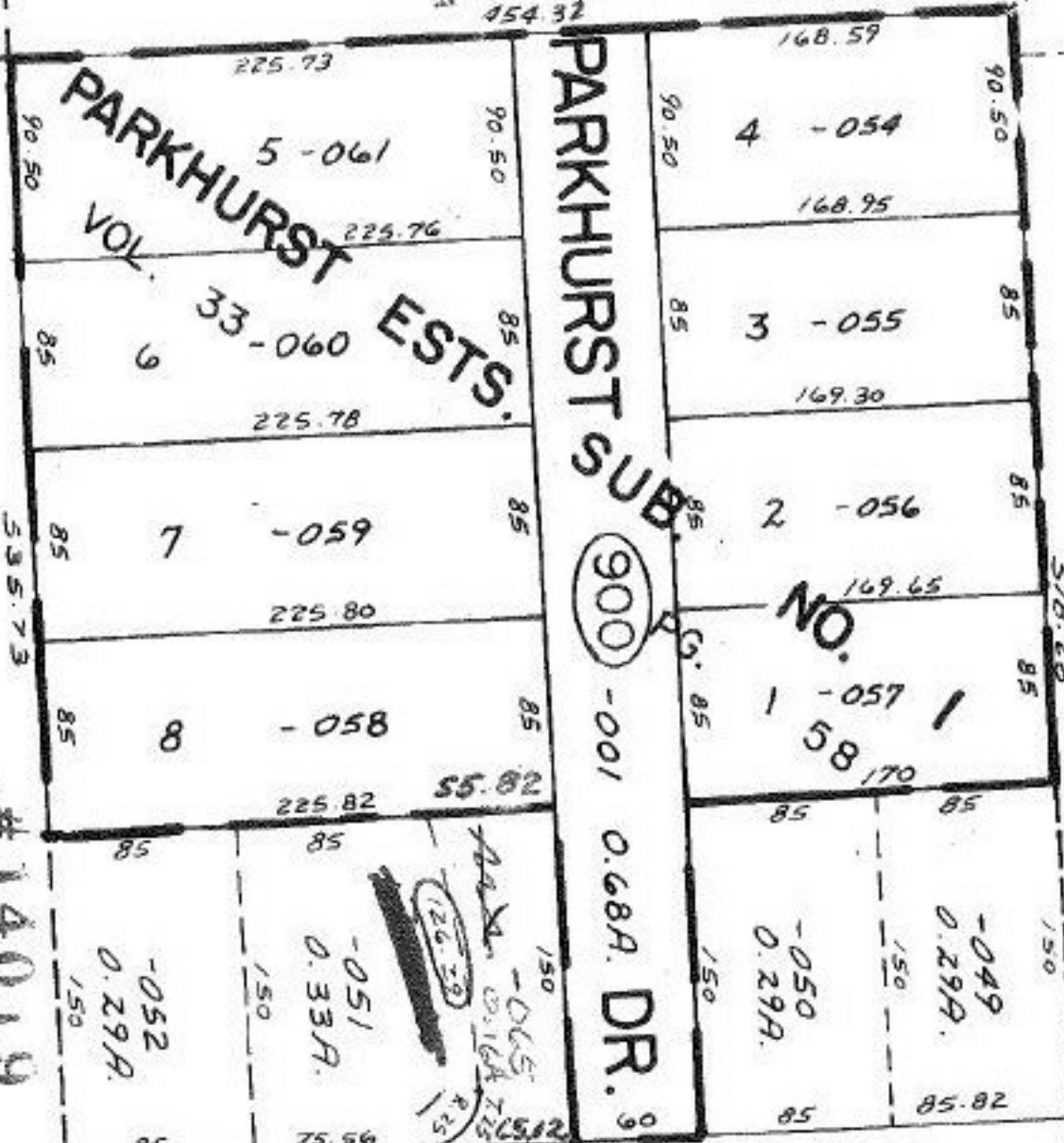
11.90
0.16
11.74

111.10

454.32

200.48

-013
2.38 A.



1-14-83

APPROVED
LORAIN CO.
MAP DEPT.
DATE 1-15-82
PAGE 3-00-012-13
BY T. McNeil
VOID AFTER

14019

239.33
-041 .18A.
202.03

160176

-039 456.50 42A.

200.48

702.03

SEE 3-00-002-A