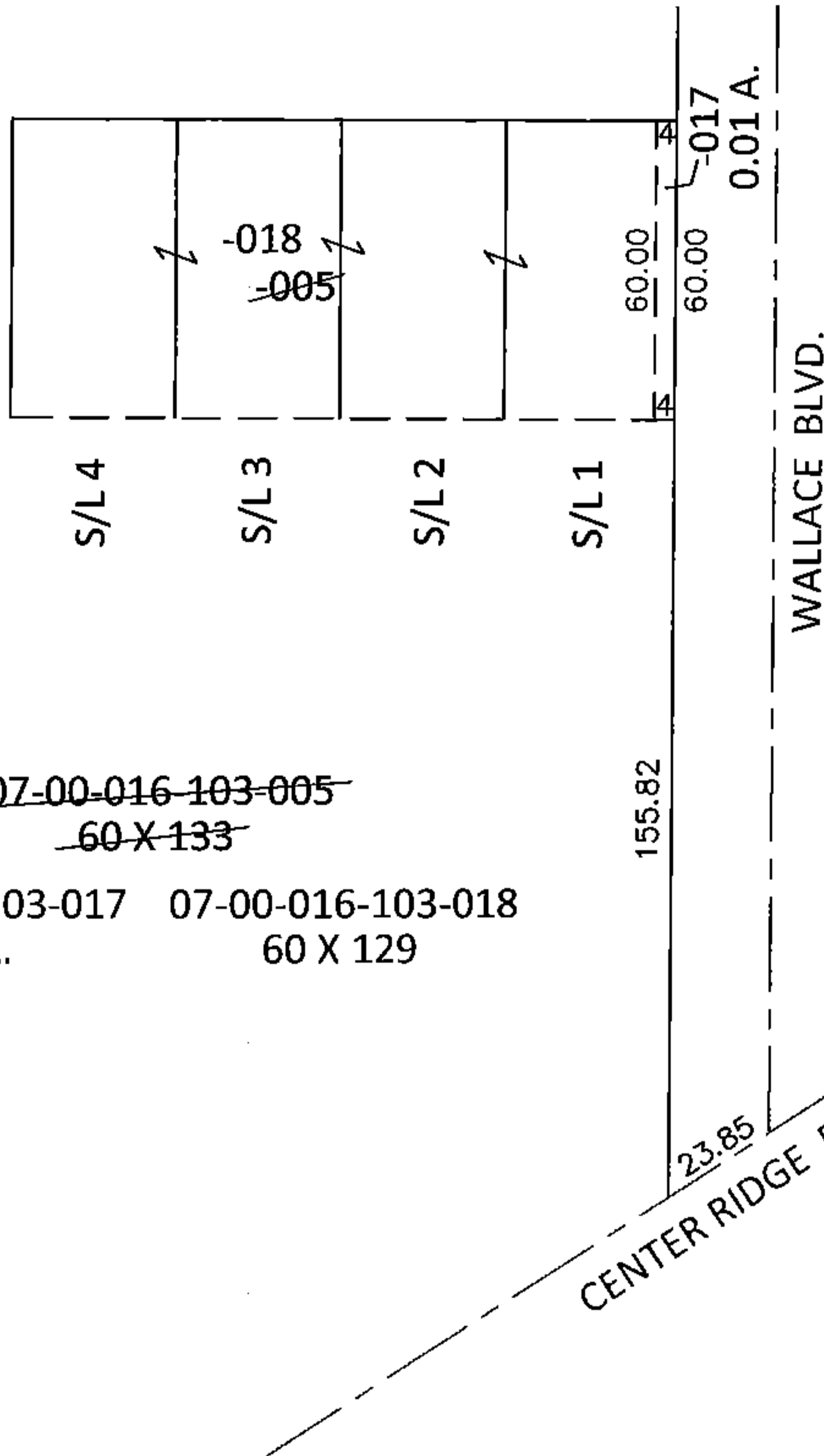
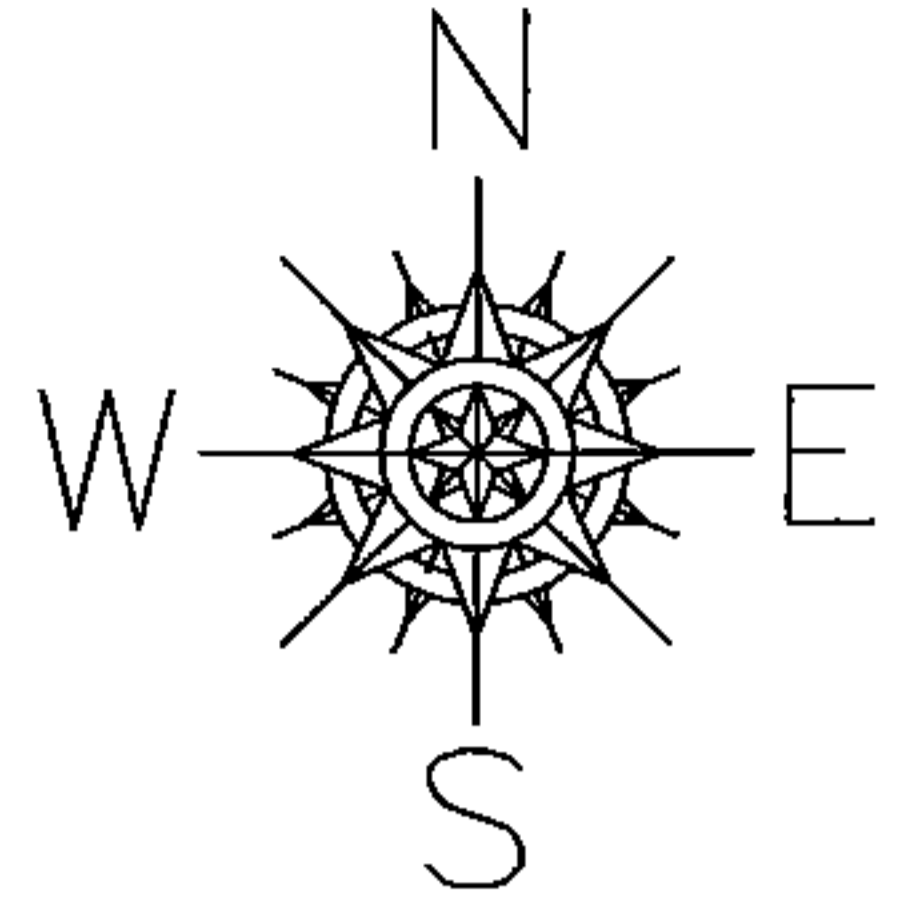


PARENT PARCEL: 07-00-016-103-005

CHILD PARCEL: 07-00-016-103-017, -018

STARTING POINT: INTERSECTION OF C/L OF CENTER RIDGE RD. AND C/L OF WALLACE BLVD.

14-00670



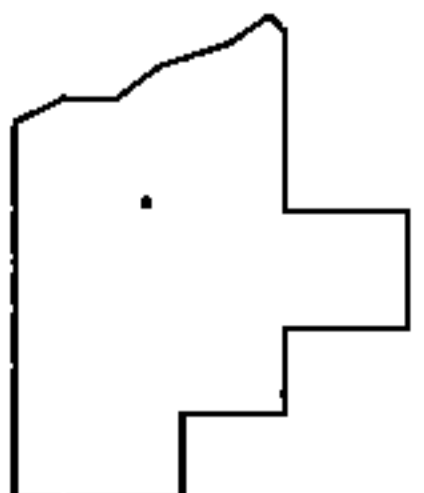
LOR-20-22.13

300-WDV

~~07-00-016-103-005~~

~~60 X 133~~

07-00-016-103-017 07-00-016-103-018
0.01 A. 60 X 129



SPLITS/DEEDS PROCESSED

LORAIN COUNTY TAX MAP DEPARTMENT
226 MIDDLE AVE. ELYRIA, OHIO

SURVEYED BY: WILLIAM D. THOMAS

CLOSURE: .00:10,000

MAP PAGE(S): 7-00-016-B

APPROVED BY: RRM DATE: 12-17-14

SCALE: 1"=50' PRIOR INST.: 19970495857