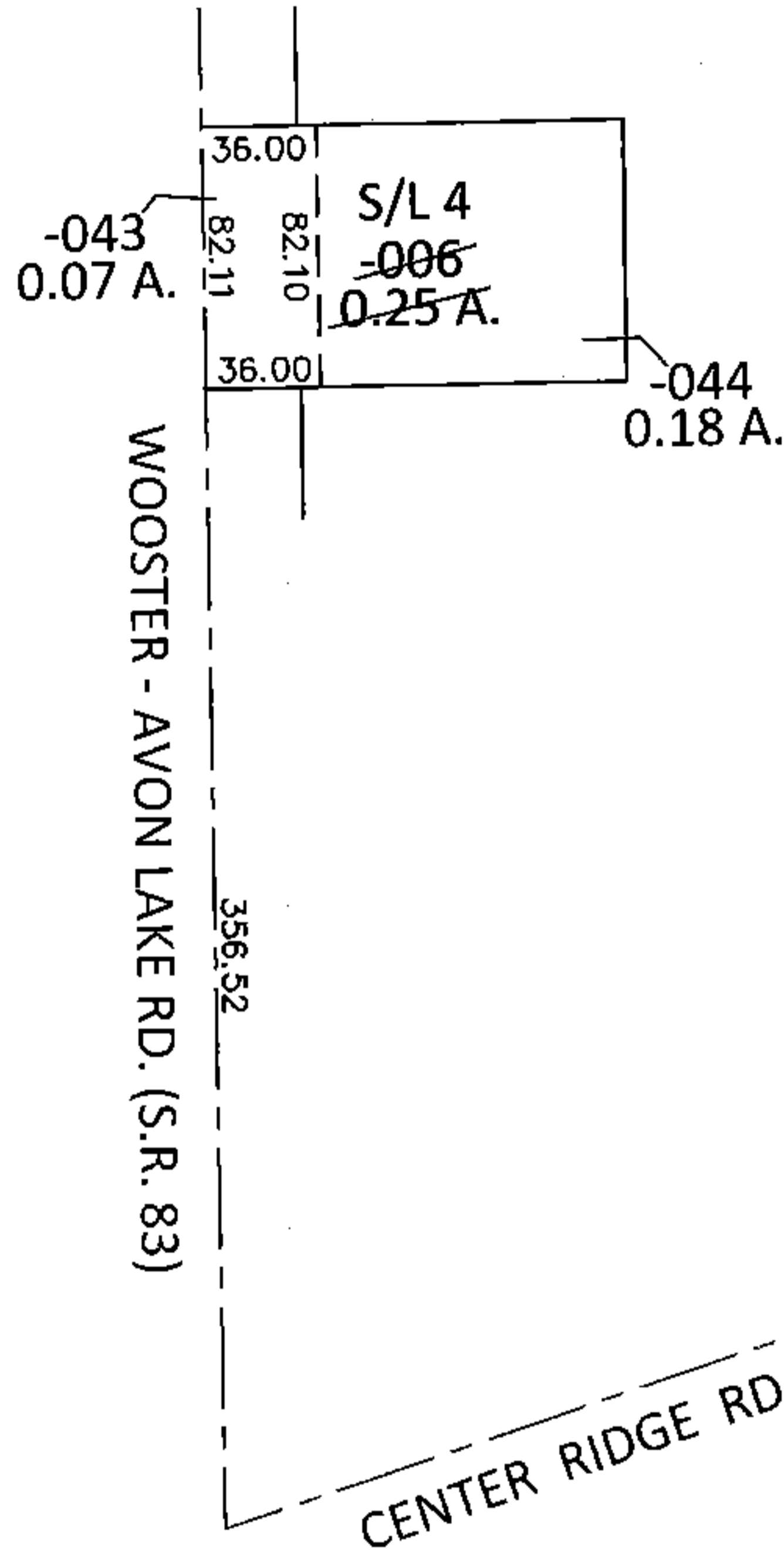
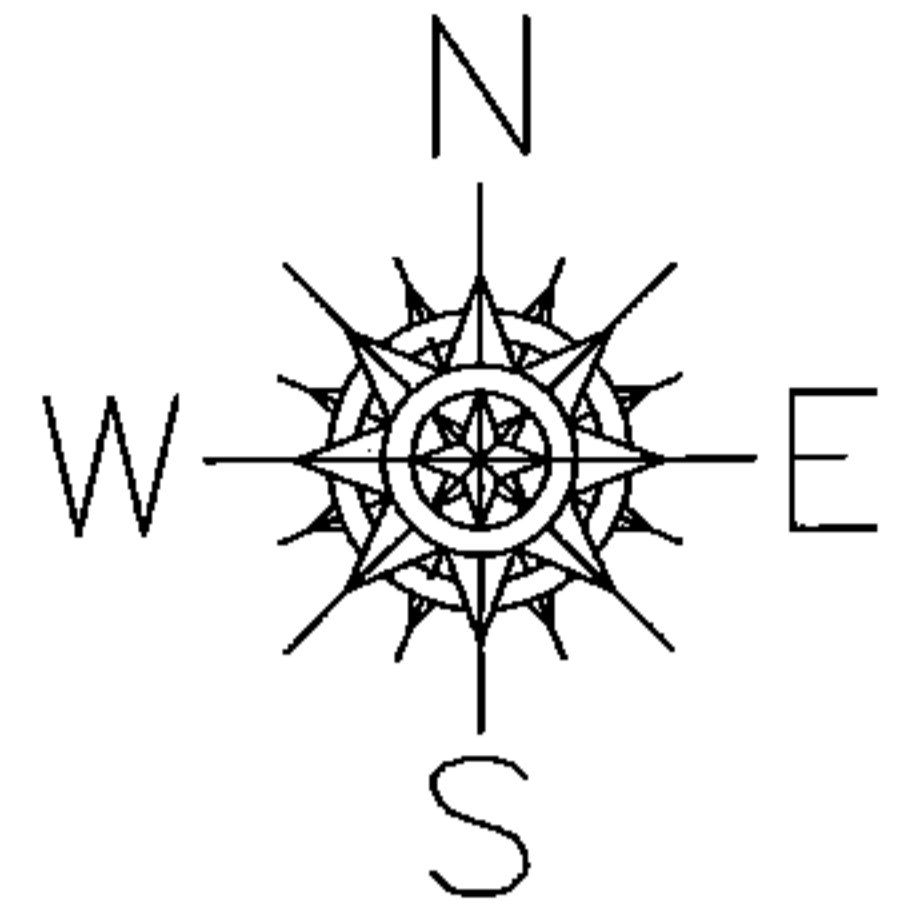


PARENT PARCEL: 07-00-021-102-008

CHILD PARCEL: 07-00-021-102-043, -044

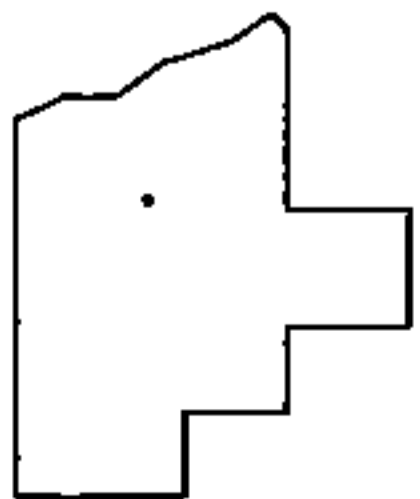
STARTING POINT: INTERSECTION OF C/L OF CENTER RIDGE RD. AND C/L OF S.R.83

14-00655



LOR-20-22.13

247-WDV



**SPLITS/DEEDS PROCESSED**

LORAIN COUNTY TAX MAP DEPARTMENT  
226 MIDDLE AVE. ELYRIA, OHIO

SURVEYED BY: WILLIAM D. THOMAS

CLOSURE: .00:10,000

MAP PAGE(S): 7-00-021-A

APPROVED BY: RRM DATE: 1-26-15

SCALE: 1"= 100 PRIOR INST.: DV 1222/706