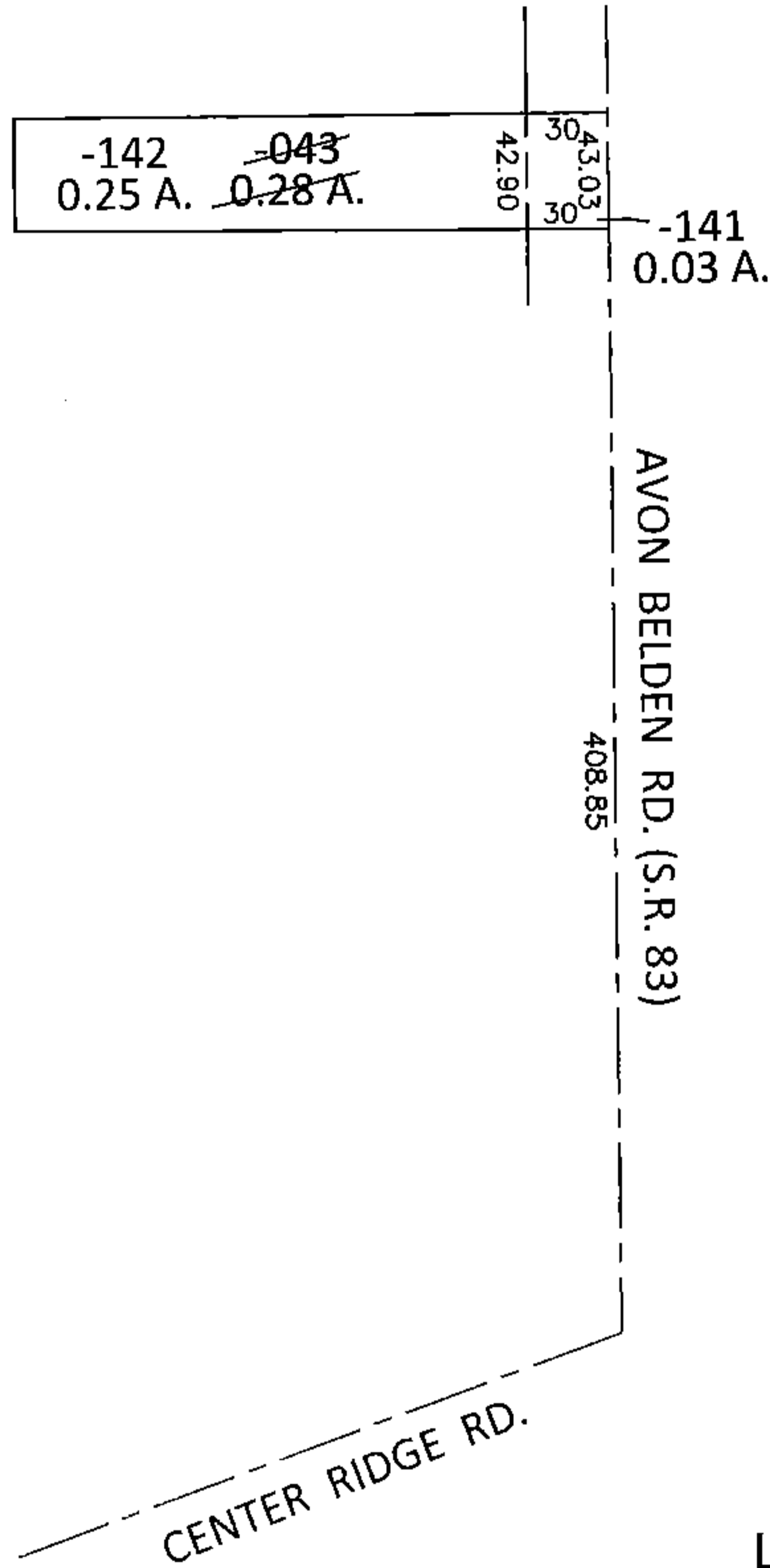
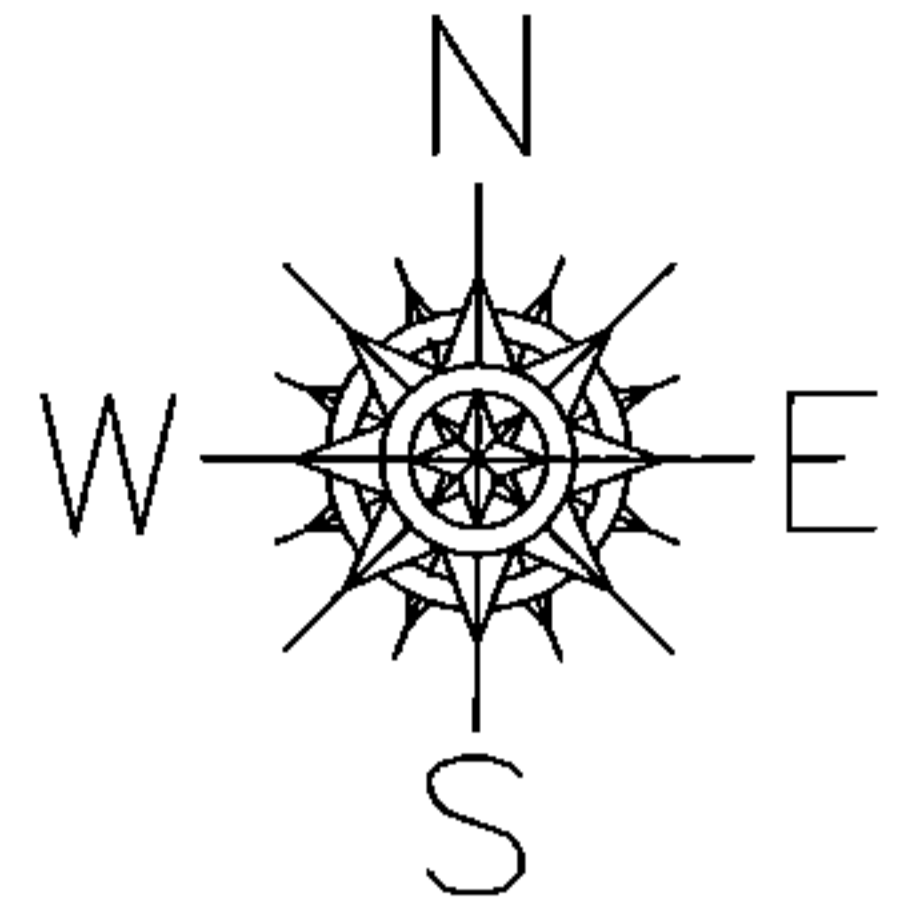


PARENT PARCEL: 07-00-028-102-043

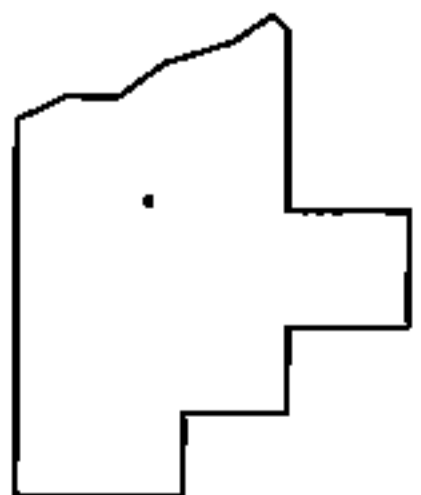
CHILD PARCEL: 07-00-028-102-141, -142

STARTING POINT: INTERSECTION OF C/L OF CENTER RIDGE RD. AND C/L OF S.R.83

14-00651



LOR-20-22.13
237-WDV



SPLITS/DEEDS PROCESSED

LORAIN COUNTY TAX MAP DEPARTMENT
226 MIDDLE AVE. ELYRIA, OHIO

SURVEYED BY: WILLIAM D. THOMAS
CLOSURE: .01:10,000
MAP PAGE(S): 7-00-028-D
APPROVED BY: RRM DATE: 2-4-15
SCALE: 1"= 100 PRIOR INST.: 20030887918