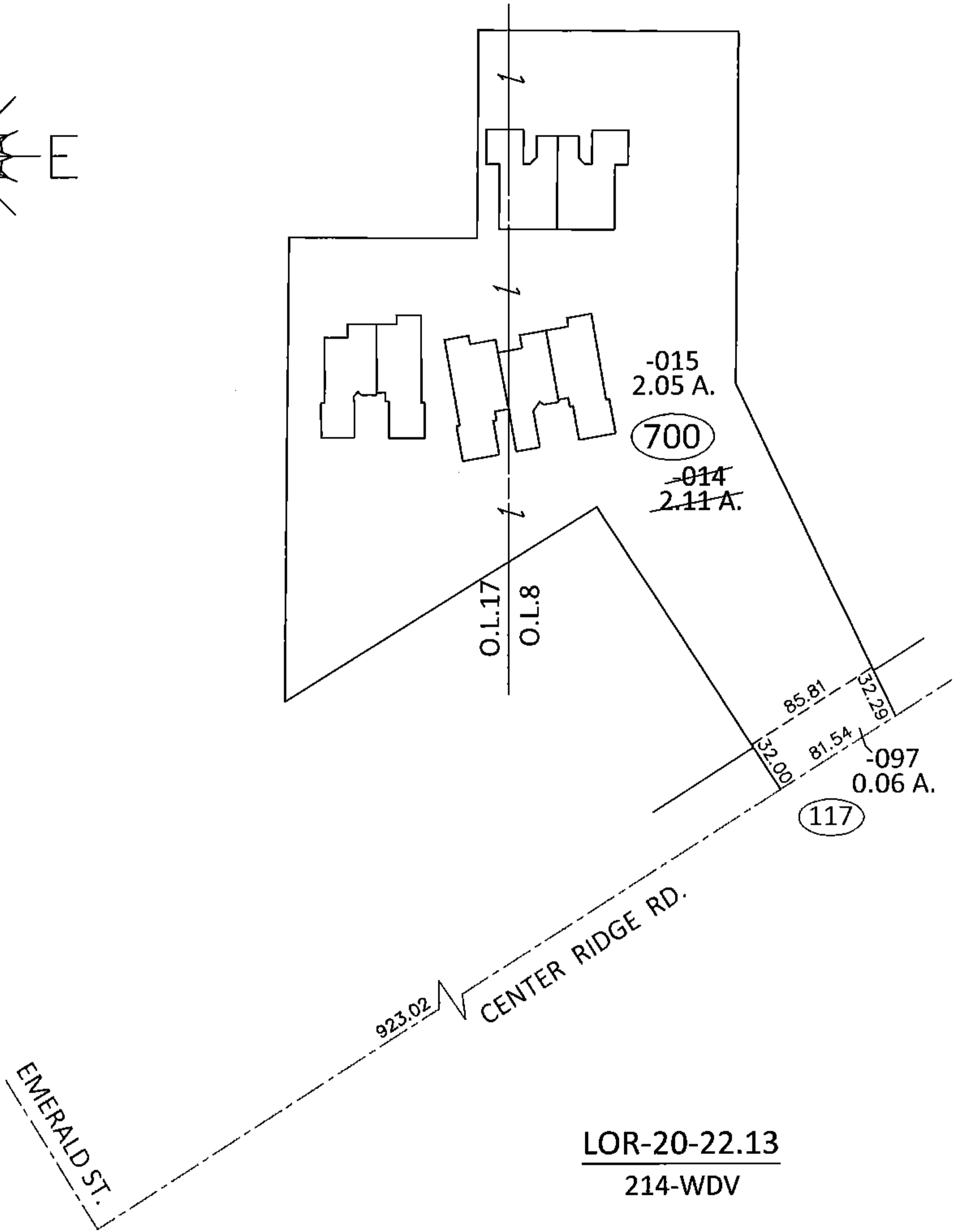
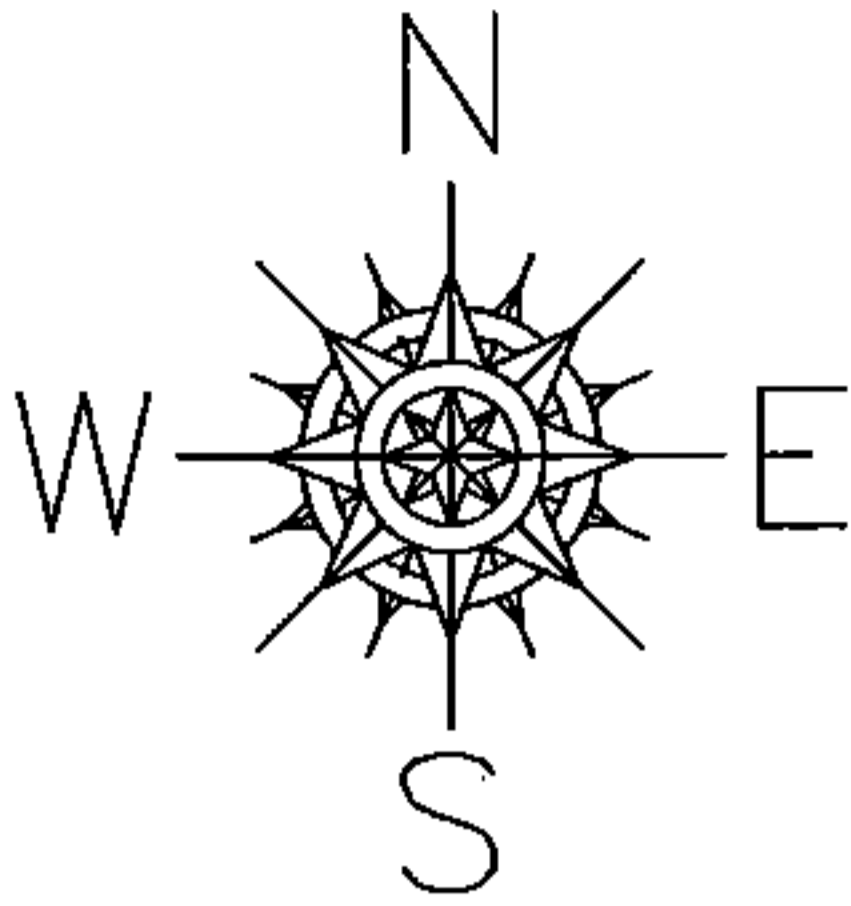


PARENT PARCEL: 07-00-008-700-014

CHILD PARCEL: 07-00-008-700-015, 07-00-008-117-097

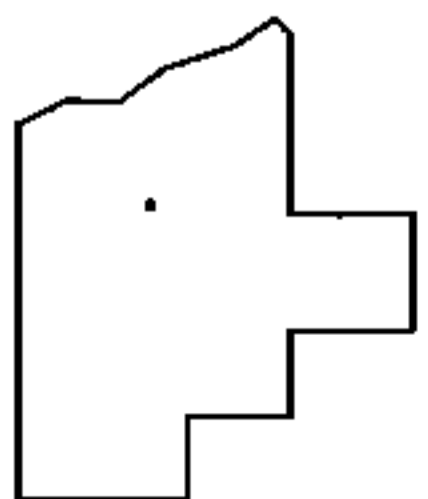
STARTING POINT: INTERSECTION OF C/L OF CENTER RIDGE RD. AND C/L OF EMERALD ST.

14-00644



LOR-20-22.13

214-WDV



SPLITS/DEEDS PROCESSED

LORAIN COUNTY TAX MAP DEPARTMENT
226 MIDDLE AVE. ELYRIA, OHIO

SURVEYED BY: WILLIAM D. THOMAS

CLOSURE: .01:10,000

MAP PAGE(S): 7-00-008-C

APPROVED BY: RRM DATE: 3-16-15

SCALE: 1"= 100 PRIOR INST.: PV 57/77