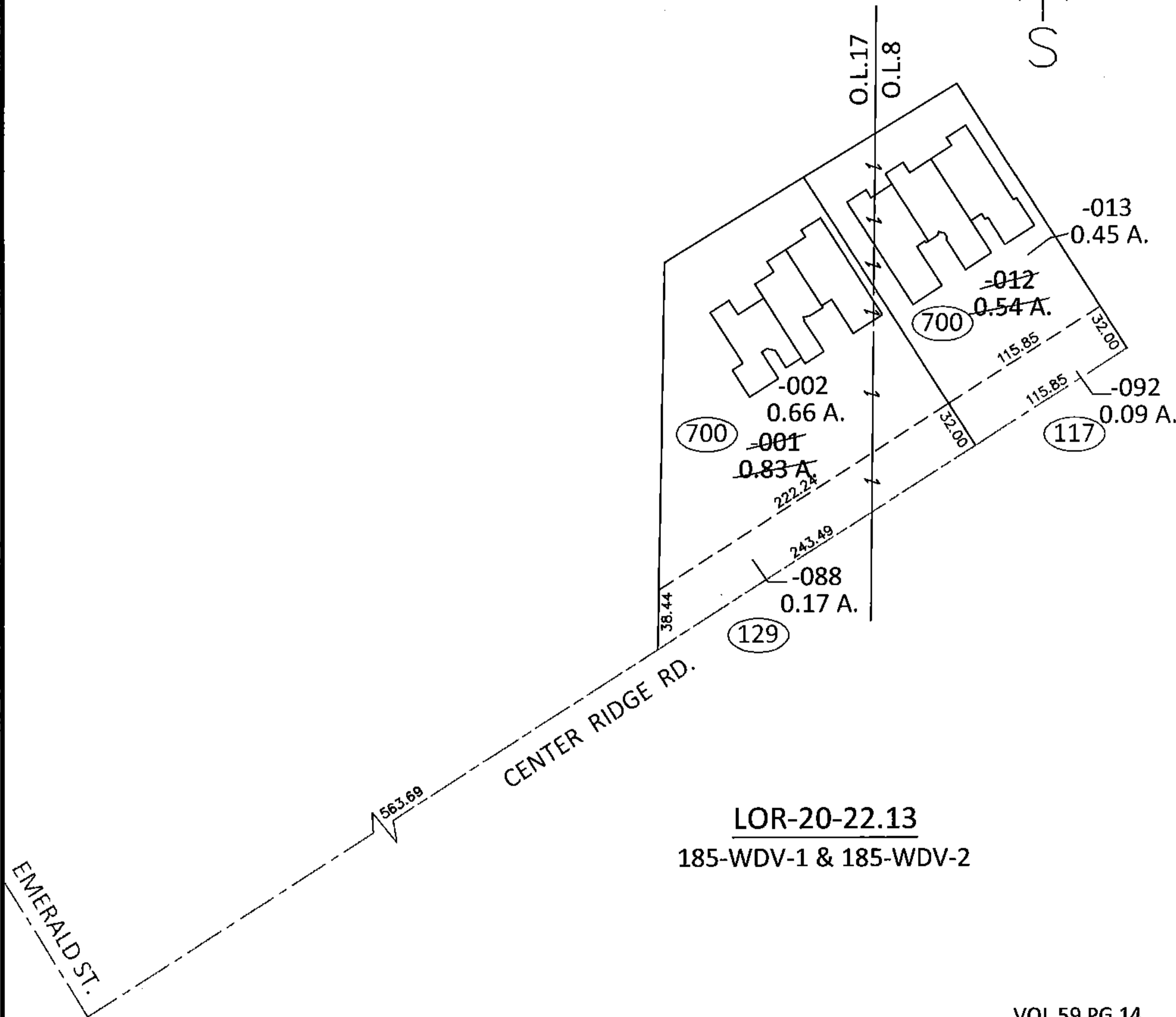
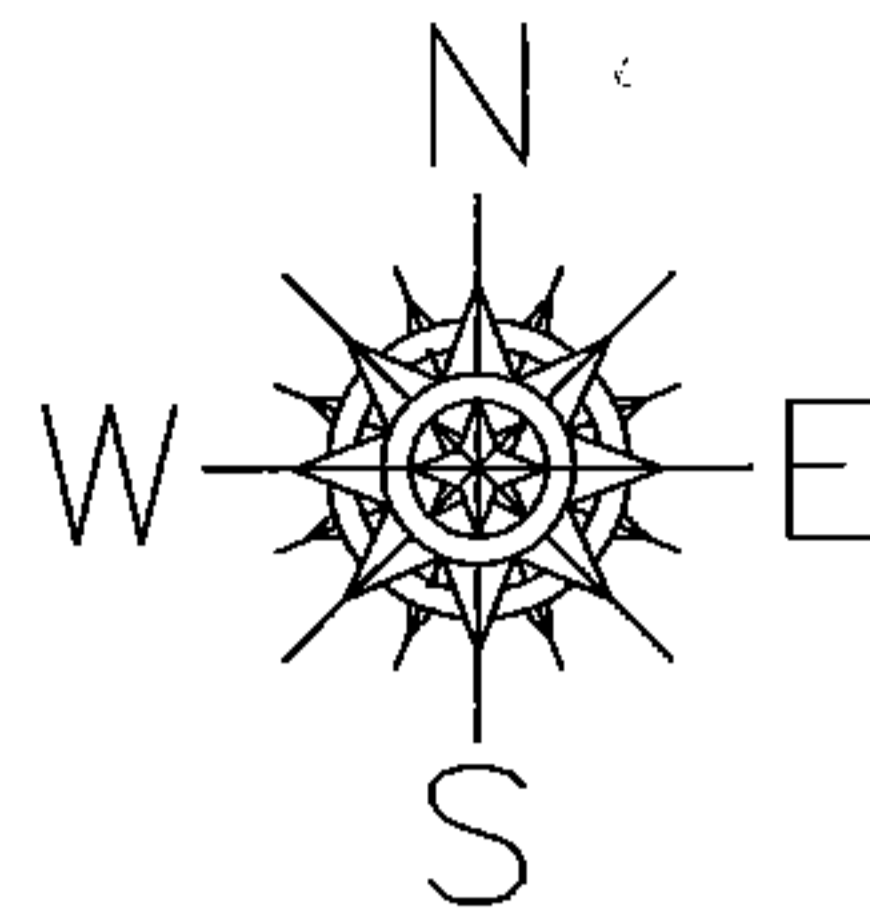


PARENT PARCEL: 07-00-008-700-012, 07-00-017-700-001

CHILD PARCEL: 07-00-008-117-092, 07-00-008-700-013, 07-00-017-129-088, 07-00-017-700-002

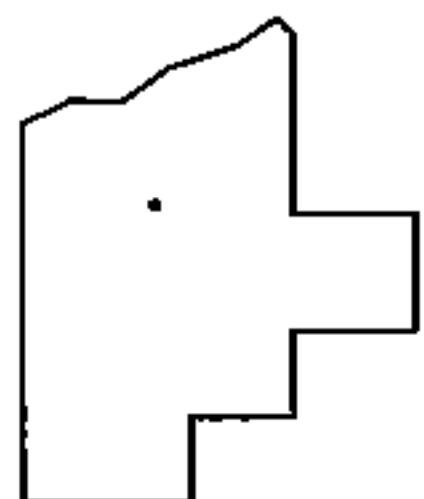
STARTING POINT: INTERSECTION OF C/L OF CENTER RIDGE RD. AND C/L OF EMERALD ST.

14-00636



LOR-20-22.13
185-WDV-1 & 185-WDV-2

VOL.59 PG.14
VOL.63 PG.69



SPLITS/DEEDS PROCESSED

LORAIN COUNTY TAX MAP DEPARTMENT
226 MIDDLE AVE. ELYRIA, OHIO

SURVEYED BY:	WILLIAM D. THOMAS
CLOSURE:	.01:10,000
MAP PAGE(S):	7-00-008-C
APPROVED BY:	RRM DATE: 3-10-15
SCALE:	1"= 100
PRIOR INST.:	SEE ABOVE