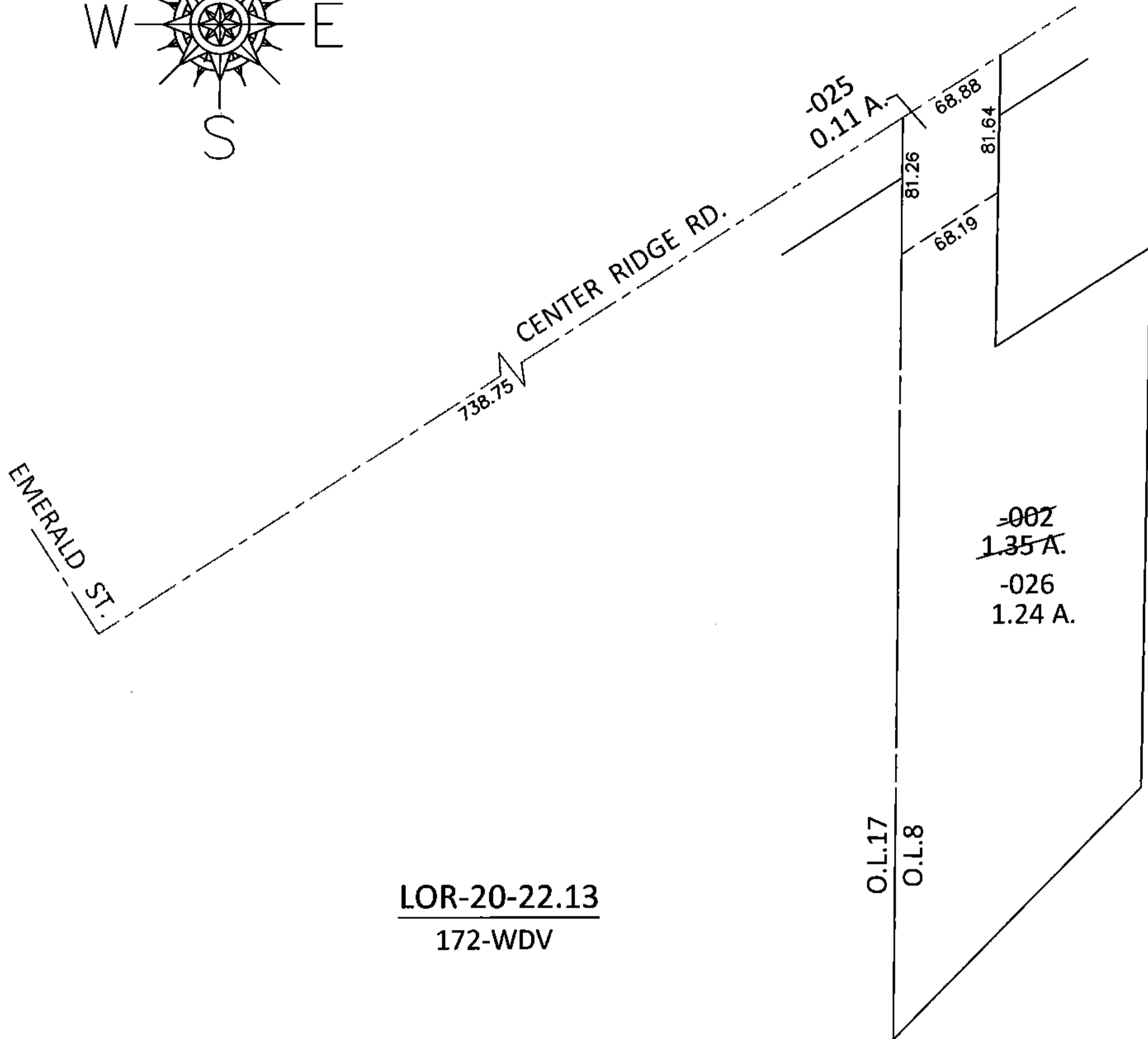
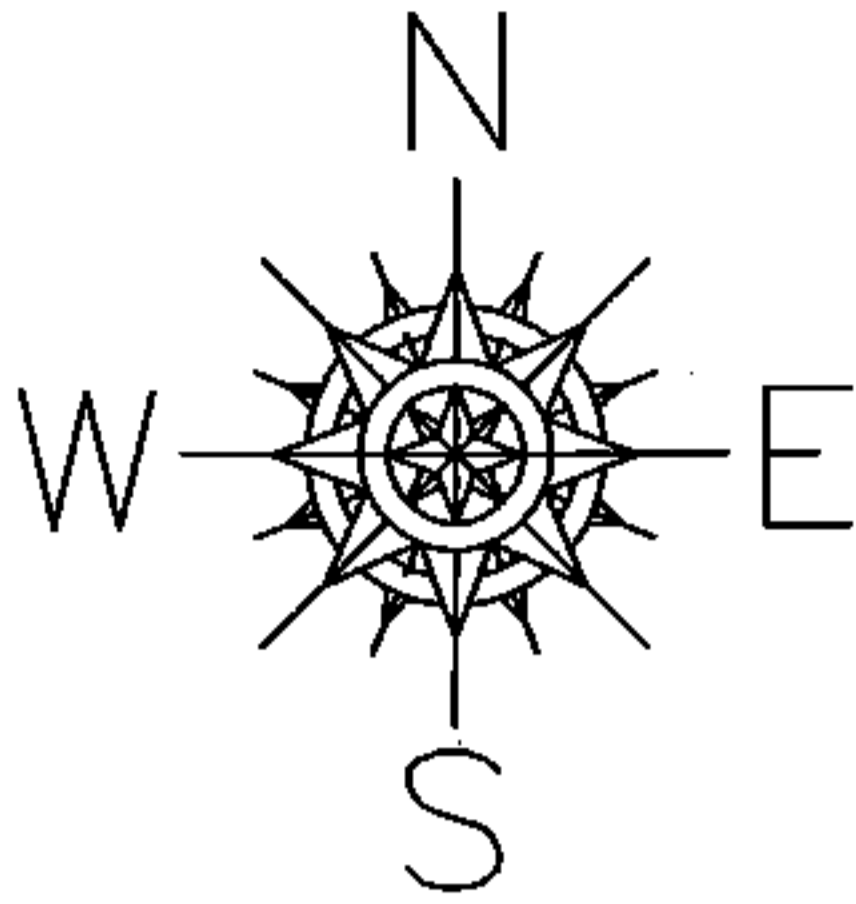


PARENT PARCEL: 07-00-008-116-002

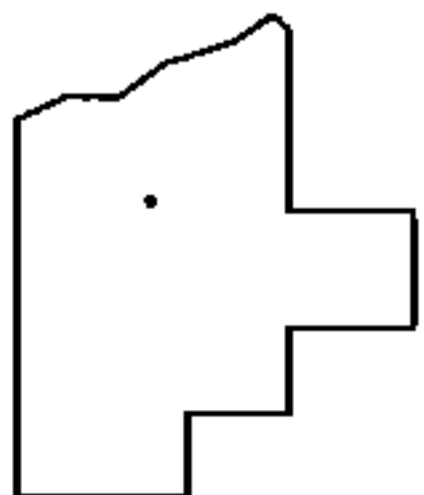
CHILD PARCEL: 07-00-008-116-025, -026

STARTING POINT: INTERSECTION OF C/L OF CENTER RIDGE RD. AND C/L OF EMERALD ST.

14-00624



LOR-20-22.13
172-WDV



SPLITS/DEEDS PROCESSED

LORAIN COUNTY TAX MAP DEPARTMENT
226 MIDDLE AVE. ELYRIA, OHIO

SURVEYED BY:	WILLIAM D. THOMAS
CLOSURE:	.01:10,000
MAP PAGE(S):	7-00-008-C
APPROVED BY:	RRM DATE: 3-5-15
SCALE:	1"= 100 PRIORITY INST.: 20040023738