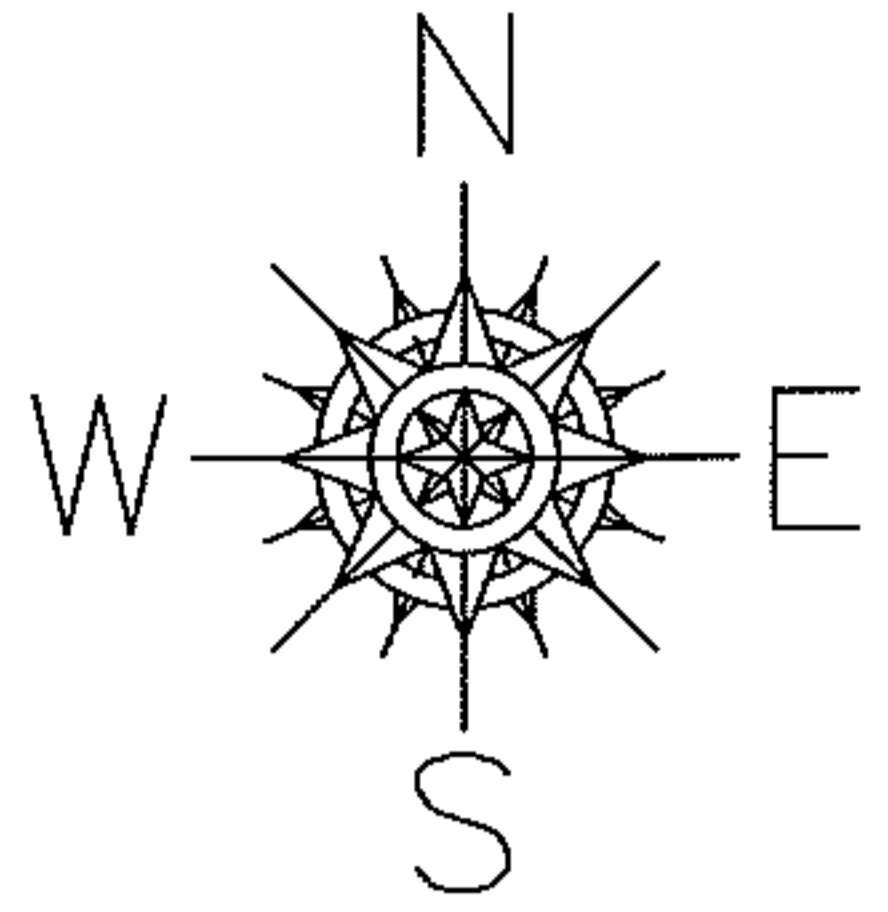
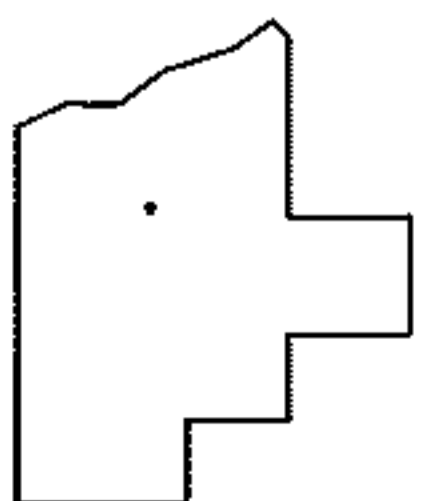
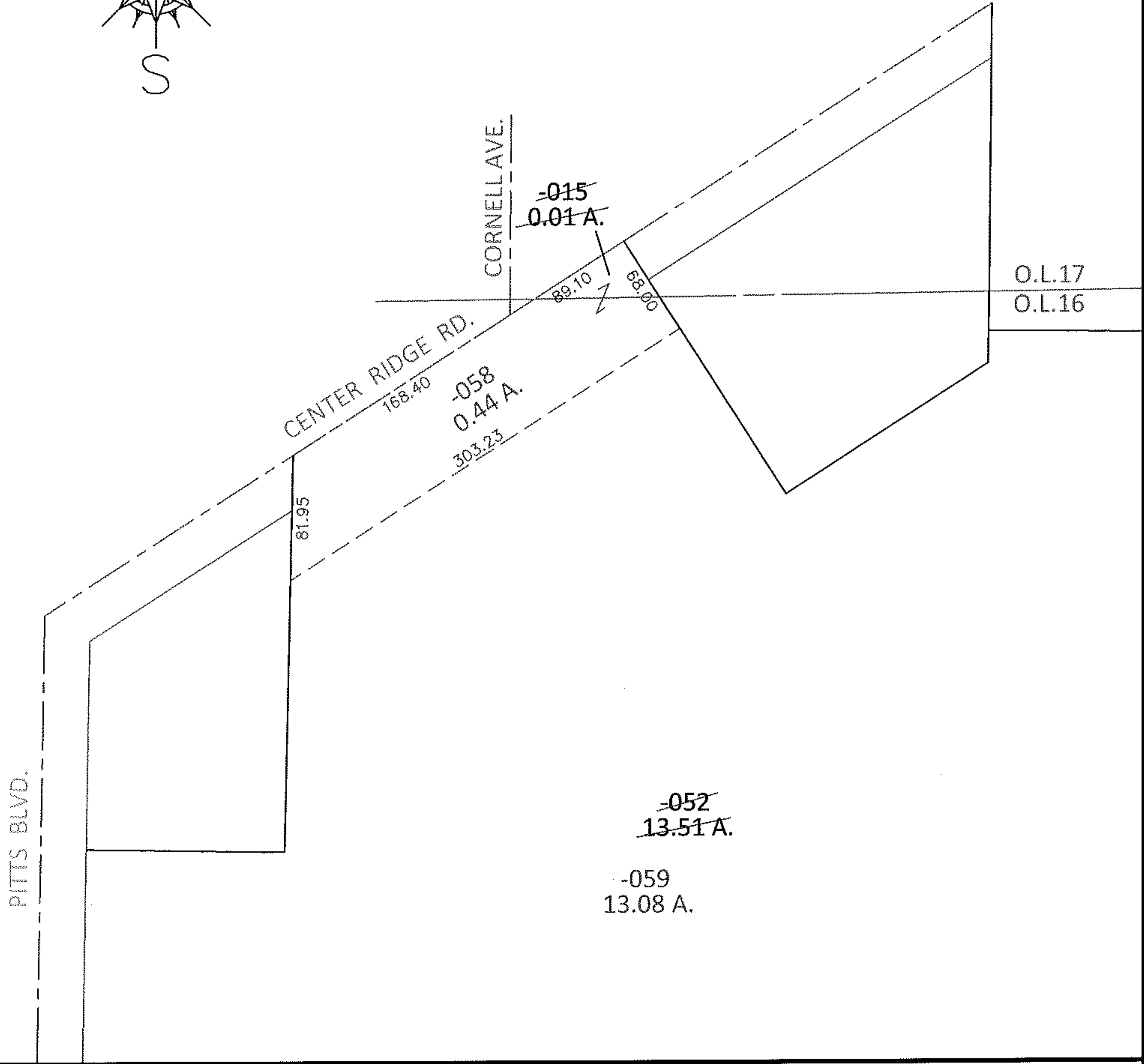


PARENT PARCEL: 07-00-016-112-052, 07-00-017-130-015
CHILD PARCEL: 07-00-016-112-058, -059
STARTING POINT: INTERSECTION OF C/L OF CENTER RIDGE RD. AND C/L CORNELL AVE.

14-00617



LOR-20-22.13
166-WDV



SPLITS/DEEDS PROCESSED
LORAIN COUNTY TAX MAP DEPARTMENT
226 MIDDLE AVE. ELYRIA, OHIO

SURVEYED BY: WILLIAM D. THOMAS
CLOSURE: .01:10,000
MAP PAGE(S): 7-00-016-B
APPROVED BY: RRM DATE: 2-25-15
SCALE: 1"= 100 PRIOR INST.: 20120403731