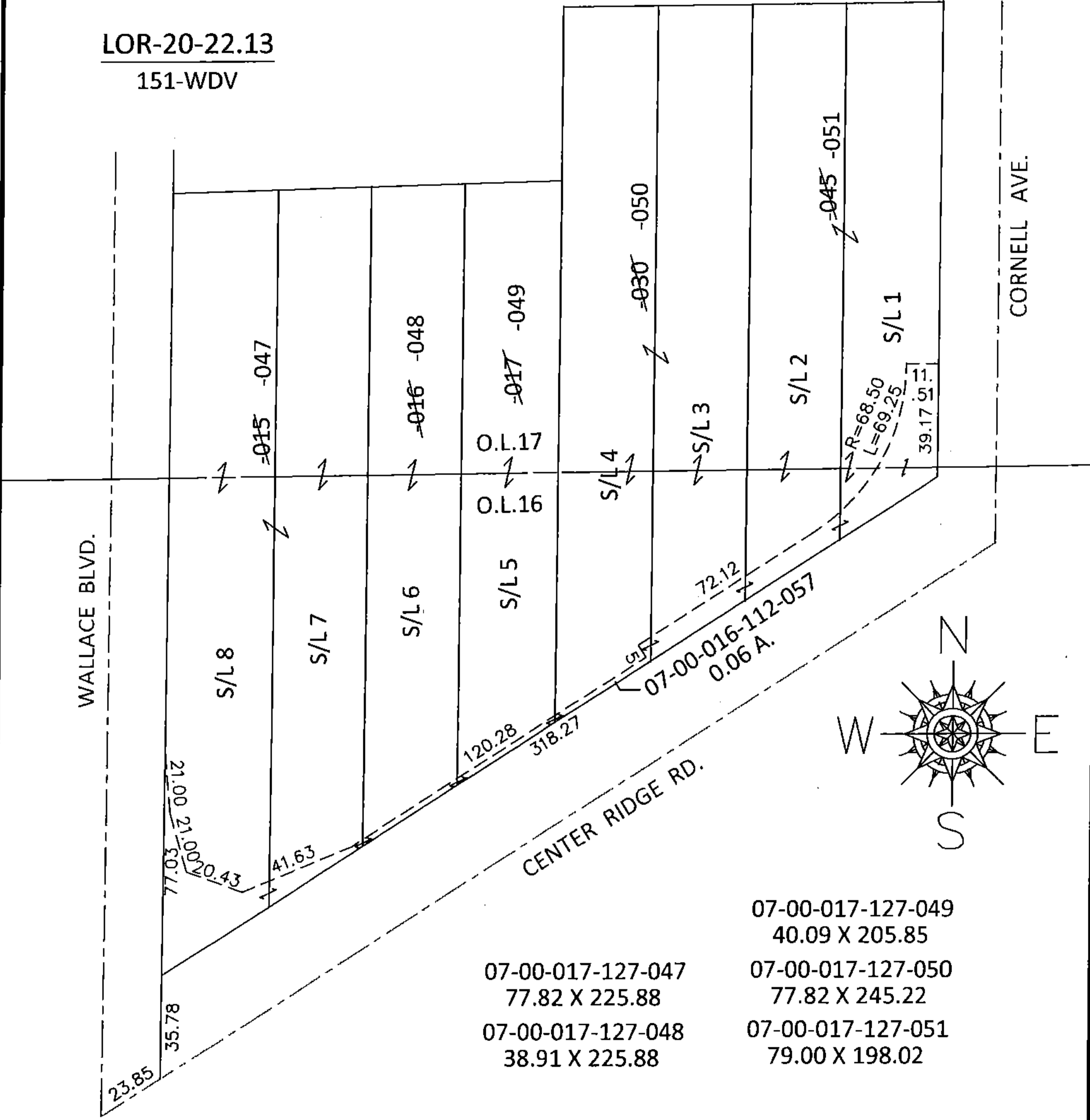


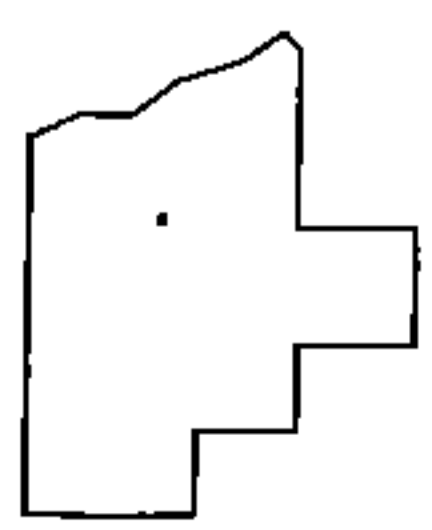
PARENT PARCEL: 07-00-017-127-015, -016, -017, -030, -045
 CHILD PARCEL: 07-00-016-112-057, 07-00-017-127-047 THRU -051
 STARTING POINT: INTERSECTION OF C/L OF CENTER RIDGE RD. AND C/L OF WALLACE BLVD.

14-00609

LOR-20-22.13
 151-WDV



07-00-017-127-049	40.09 X 205.85
07-00-017-127-047	77.82 X 225.88
07-00-017-127-048	38.91 X 225.88
07-00-017-127-050	77.82 X 245.22
07-00-017-127-051	79.00 X 198.02



SPLITS/DEEDS PROCESSED
 LORAIN COUNTY TAX MAP DEPARTMENT
 226 MIDDLE AVE. ELYRIA, OHIO

SURVEYED BY: WILLIAM D. THOMAS
 CLOSURE: .01:10,000
 MAP PAGE(S): 7-00-017-D
 APPROVED BY: RRM DATE: 2-12-15
 SCALE: 1"= 50' PRIOR INST.: 19980541562