

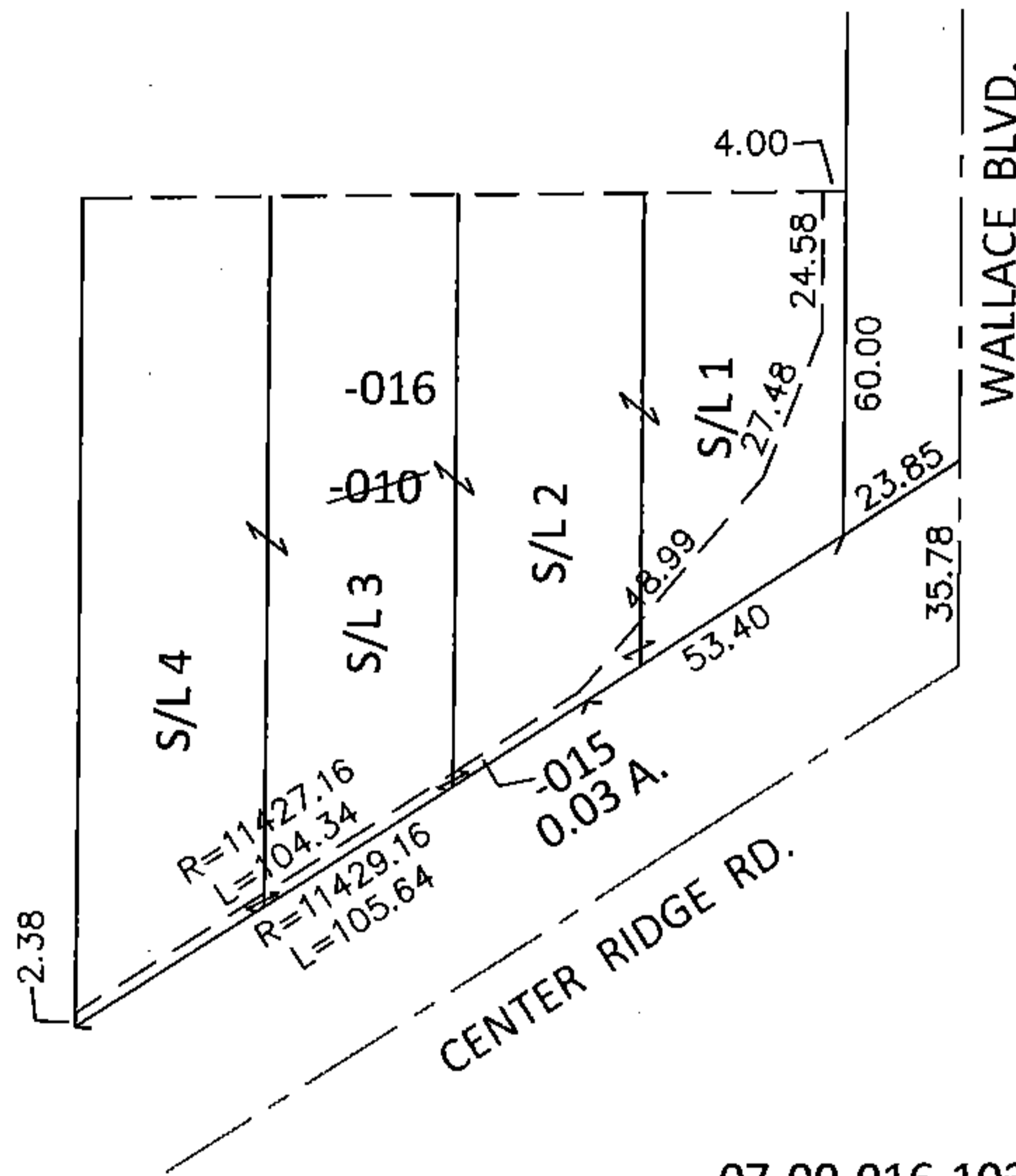
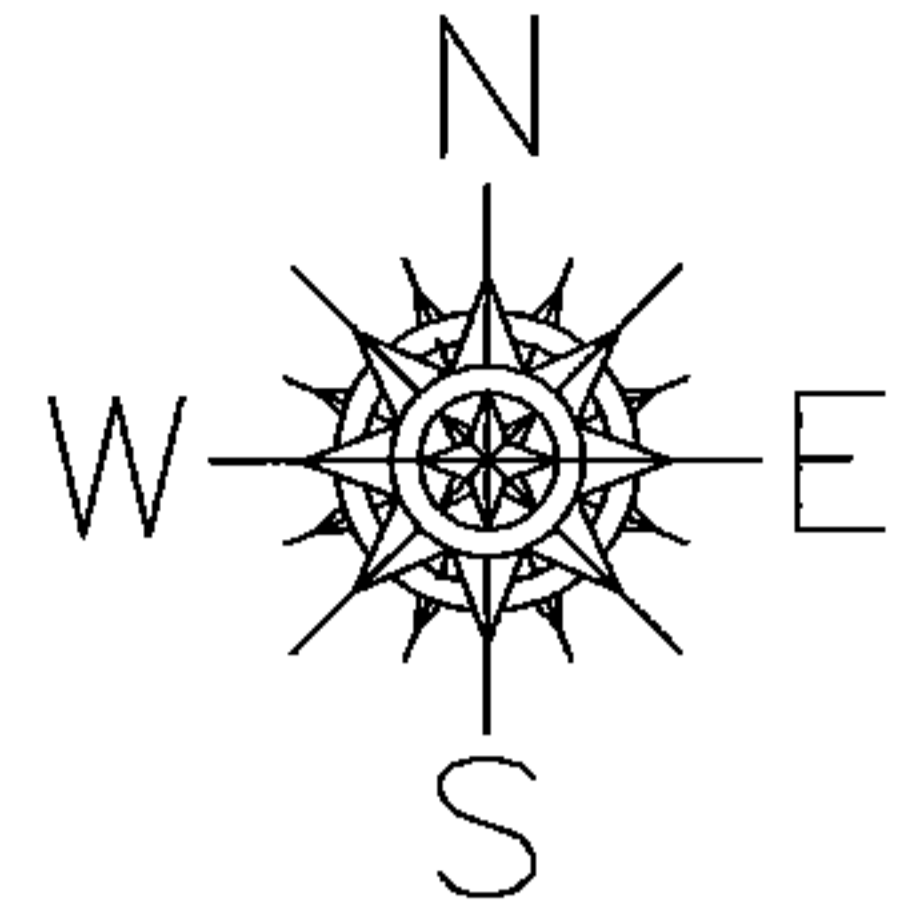
PARENT PARCEL: 07-00-016-103-010

CHILD PARCEL: 07-00-016-103-015, -016

STARTING POINT: INTERSECTION OF C/L OF CENTER RIDGE RD. AND C/L OF WALLACE BLVD.

14-00608

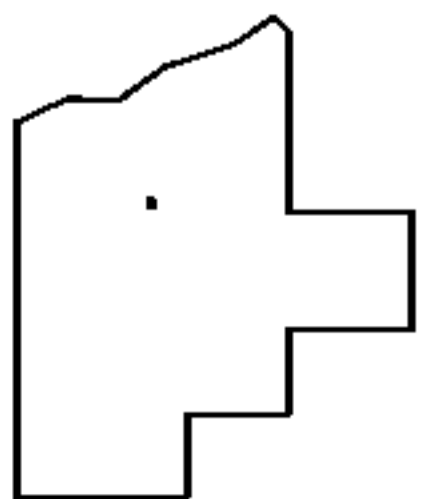
LOR-20-22.13
150-WDV



~~07-00-016-103-010~~
~~151.82 X 138 IRR~~

07-00-016-103-015
0.03 A.

07-00-016-103-016
153.33 X 135.62 IRR



SPLITS/DEEDS PROCESSED

LORAIN COUNTY TAX MAP DEPARTMENT
226 MIDDLE AVE. ELYRIA, OHIO

SURVEYED BY: WILLIAM D. THOMAS

CLOSURE: .01:10,000

MAP PAGE(S): 7-00-016-B

APPROVED BY: RRM DATE: 11-17-14

SCALE: 1"= 50' PRIOR INST.: 20070200854