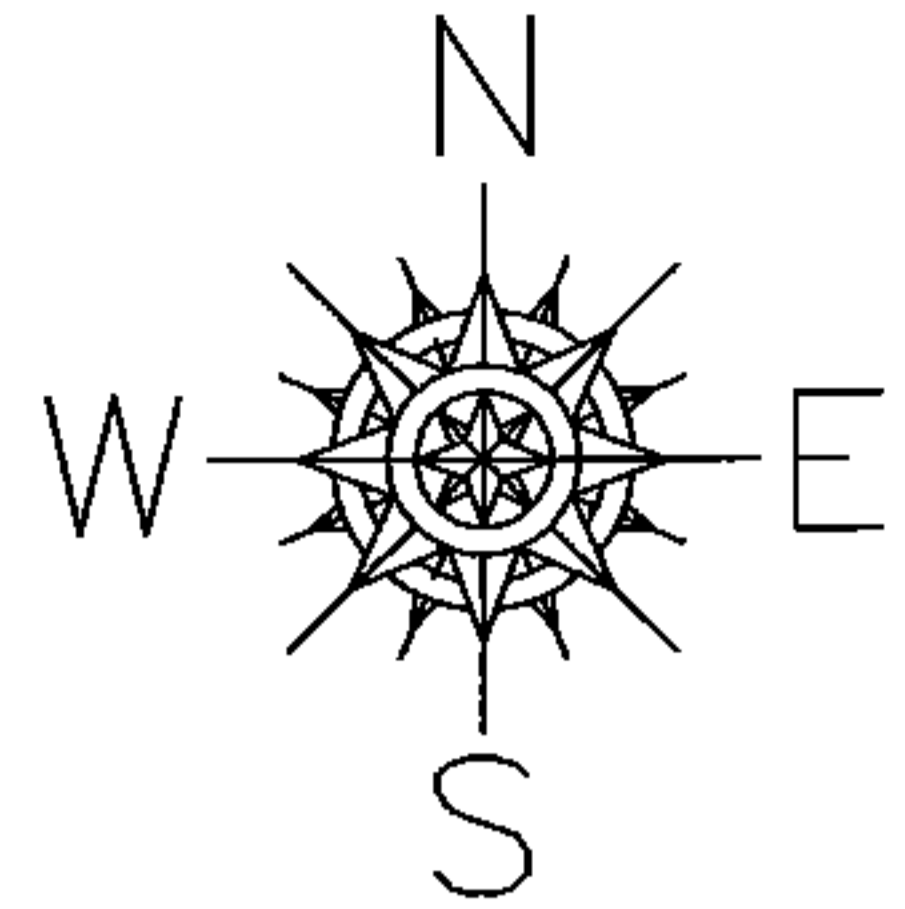


PARENT PARCEL: 07-00-016-102-006 THRU -009

CHILD PARCEL: 07-00-016-102-010 THRU -014

STARTING POINT: INTERSECTION OF C/L OF CENTER RIDGE RD. AND C/L OF OLIVE AVE.

14-00606



LOR-20-22.13

142-WDV

~~07-00-016-102-006~~
~~38.91 X 270~~

~~07-00-016-102-007~~
~~38.91 X 249~~

~~07-00-016-102-008~~
~~38.91 X 228~~

~~07-00-016-102-009~~
~~40.09 X 208~~

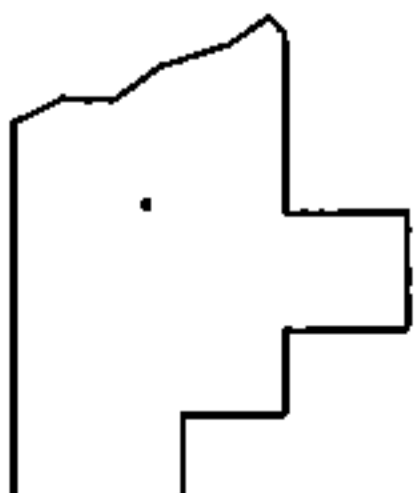
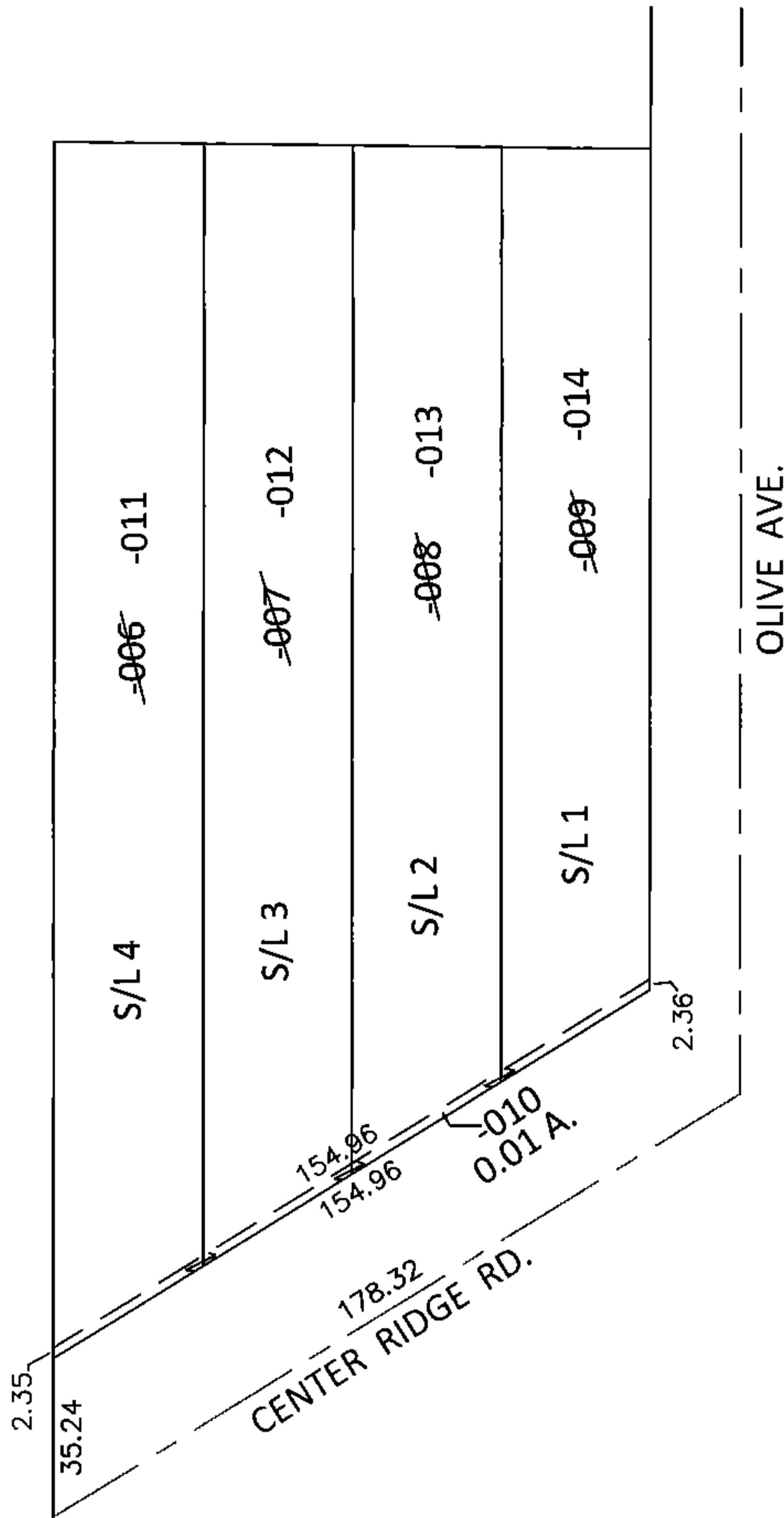
07-00-016-102-010
0.01 A.

07-00-016-102-011
38.91 X 267.63

07-00-016-102-012
38.91 X 246.99

07-00-016-102-013
38.91 X 226.37

07-00-016-102-014
40.09 X 205.75



SPLITS/DEEDS PROCESSED

LORAIN COUNTY TAX MAP DEPARTMENT
226 MIDDLE AVE. ELYRIA, OHIO

SURVEYED BY: WILLIAM D. THOMAS

CLOSURE: .01:10,000

MAP PAGE(S): 7-00-016-B

APPROVED BY: RRM DATE: 2-11-15

SCALE: 1"= 50' PRIOR INST.: OR 34/153