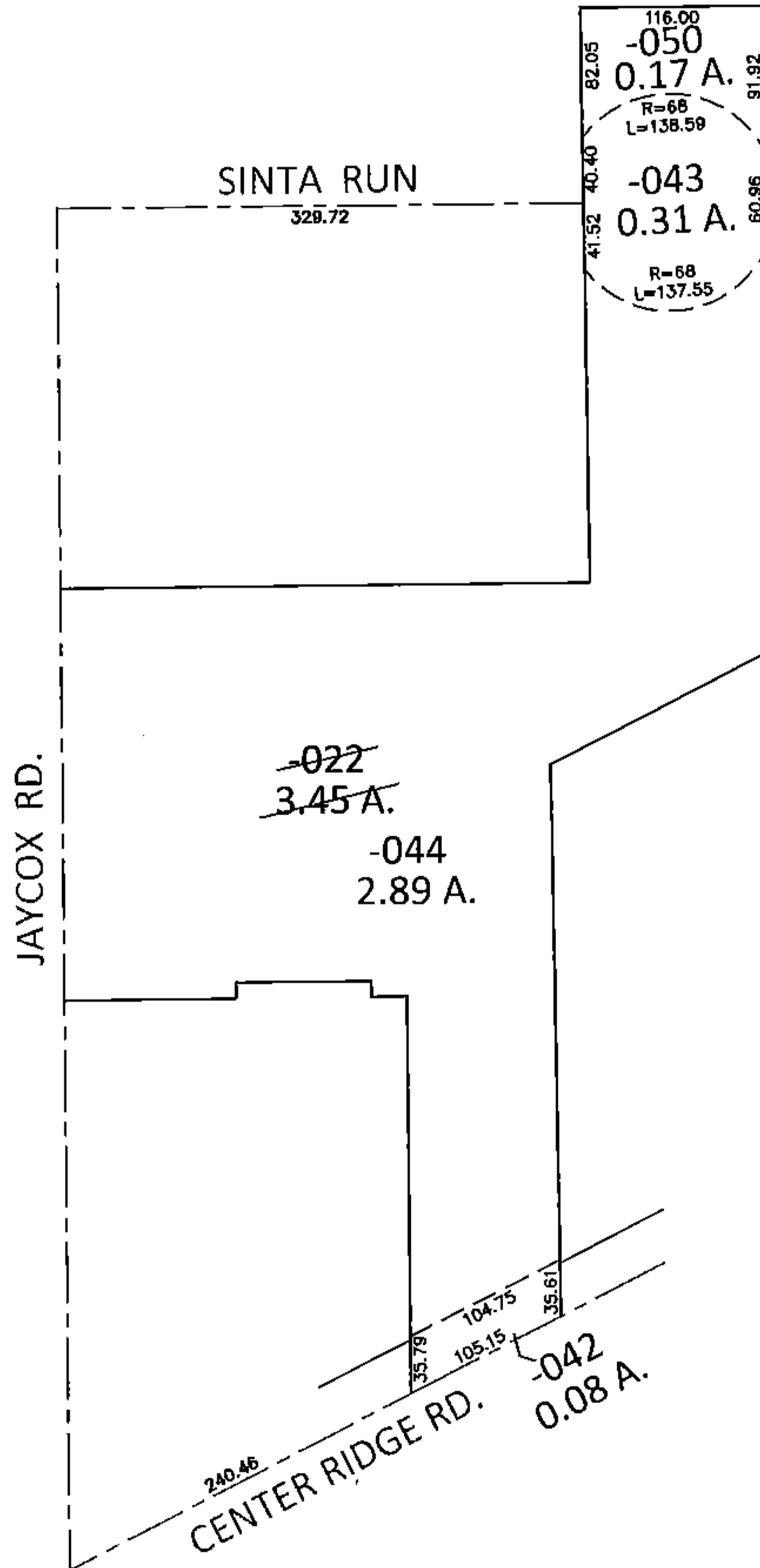
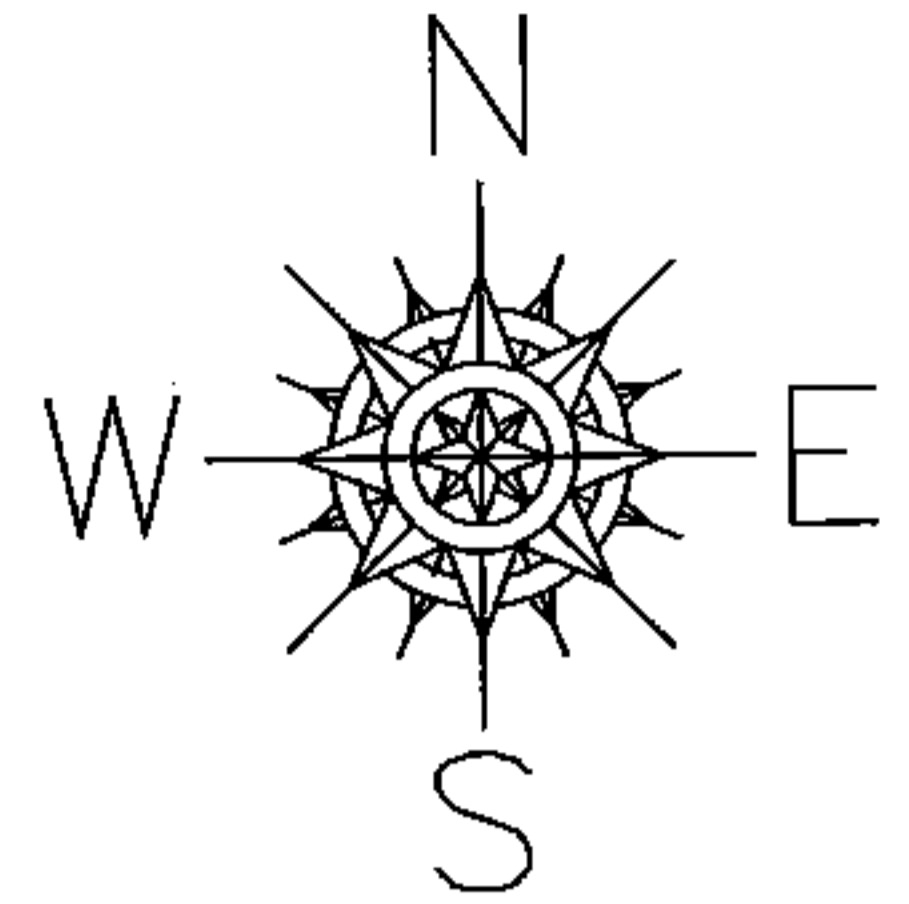


PARENT PARCEL: 07-00-016-101-022

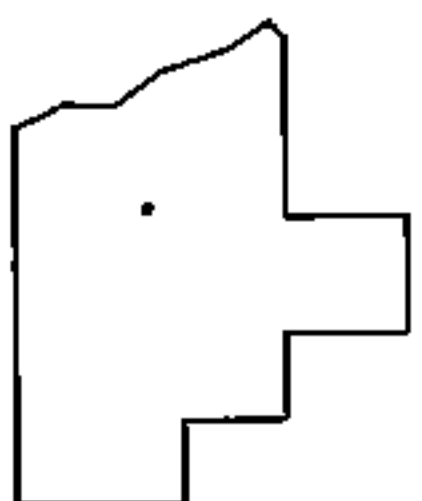
CHILD PARCEL: 07-00-016-101-042 THRU -044, -050

STARTING POINT: INTERSECTION OF C/L OF CENTER RIDGE RD. AND C/L OF JAYCOX RD.

14-00585



LOR-20-22.13  
117-WDV-1 & 2  
117-E



SPLITS/DEEDS PROCESSED

LORAIN COUNTY TAX MAP DEPARTMENT  
226 MIDDLE AVE. ELYRIA, OHIO

SURVEYED BY: WILLIAM D. THOMAS

CLOSURE: .01:10,000

MAP PAGE(S): 7-00-016-A

APPROVED BY: RRM DATE: 12-8-14

SCALE: 1"=150 PRIOR INST.: 20050107274