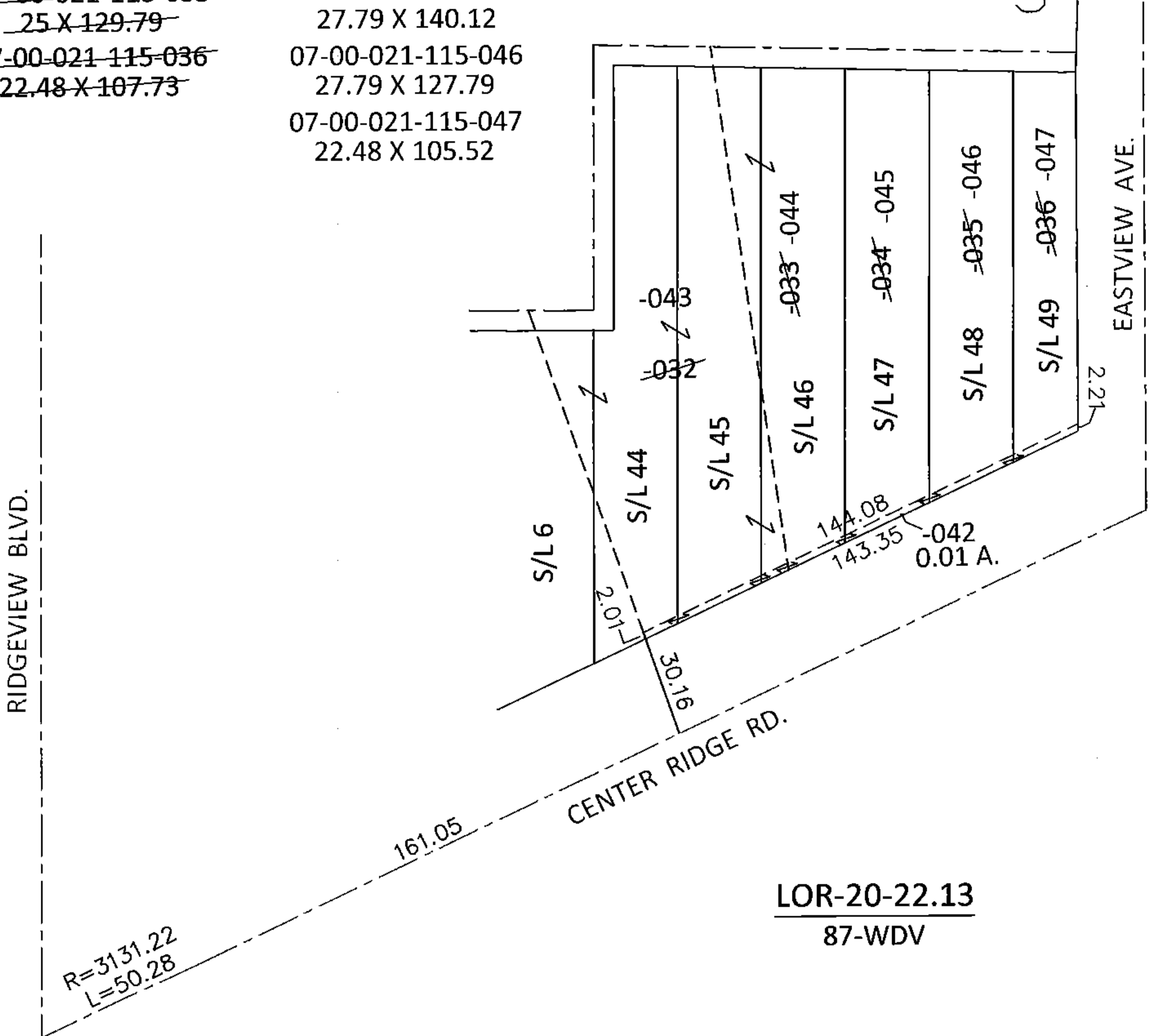
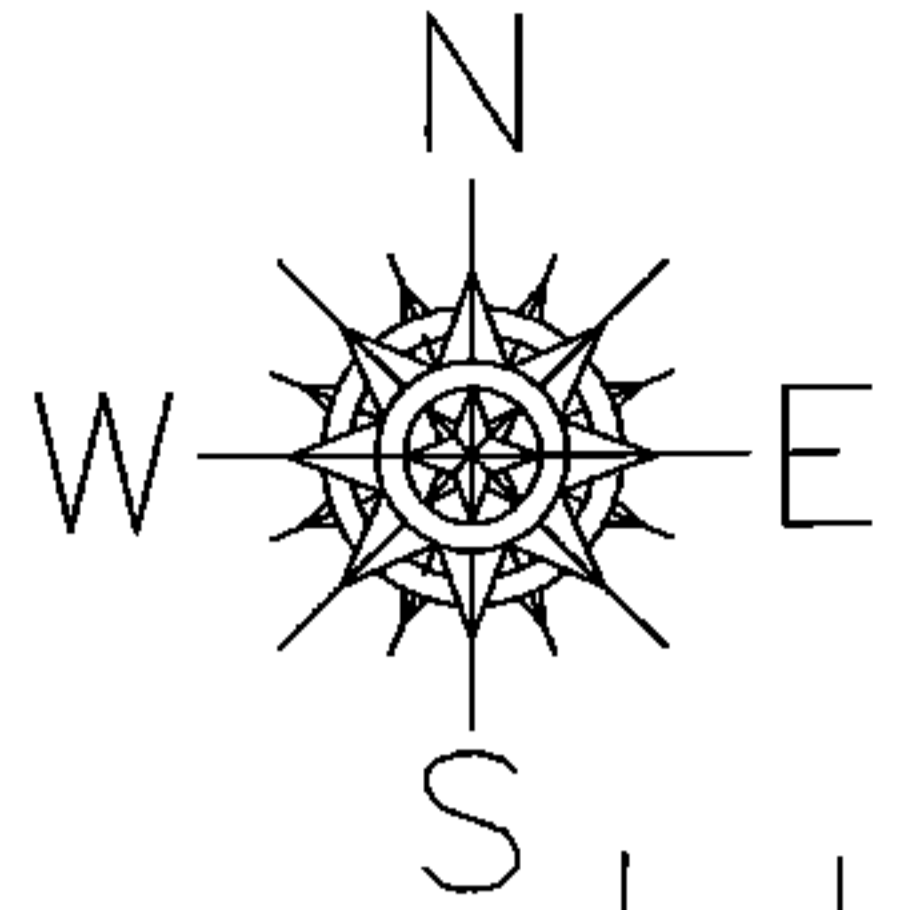


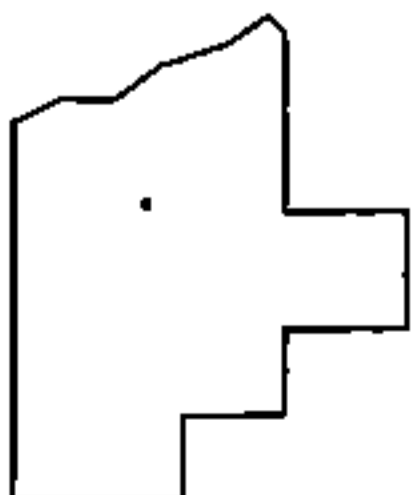
PARENT PARCEL: 07-00-021-115-032 THRU -036
 CHILD PARCEL: 07-00-021-115-042 THRU -047
 STARTING POINT: INTERSECTION OF C/L OF CENTER RIDGE RD. AND C/L OF RIDGEVIEW BLVD.

14-00560

07-00-021-115-032 47.58 X ?	07-00-021-115-042 0.01 A.
07-00-021-115-033 19.79 X ?	07-00-021-115-043 47.58 X ?
07-00-021-115-034 25 X 142.12	07-00-021-115-044 19.79 X ?
07-00-021-115-035 25 X 129.79	07-00-021-115-045 27.79 X 140.12
07-00-021-115-036 22.48 X 107.73	07-00-021-115-046 27.79 X 127.79
	07-00-021-115-047 22.48 X 105.52



LOR-20-22.13
87-WDV



SPLITS/DEEDS PROCESSED

LORAIN COUNTY TAX MAP DEPARTMENT
226 MIDDLE AVE. ELYRIA, OHIO

SURVEYED BY: WILLIAM D. THOMAS
 CLOSURE: .01:10,000
 MAP PAGE(S): 7-00-021-B
 APPROVED BY: RRM DATE: 9-15-14
 SCALE: 1"= 50' PRIOR INST.: OR 32/158