

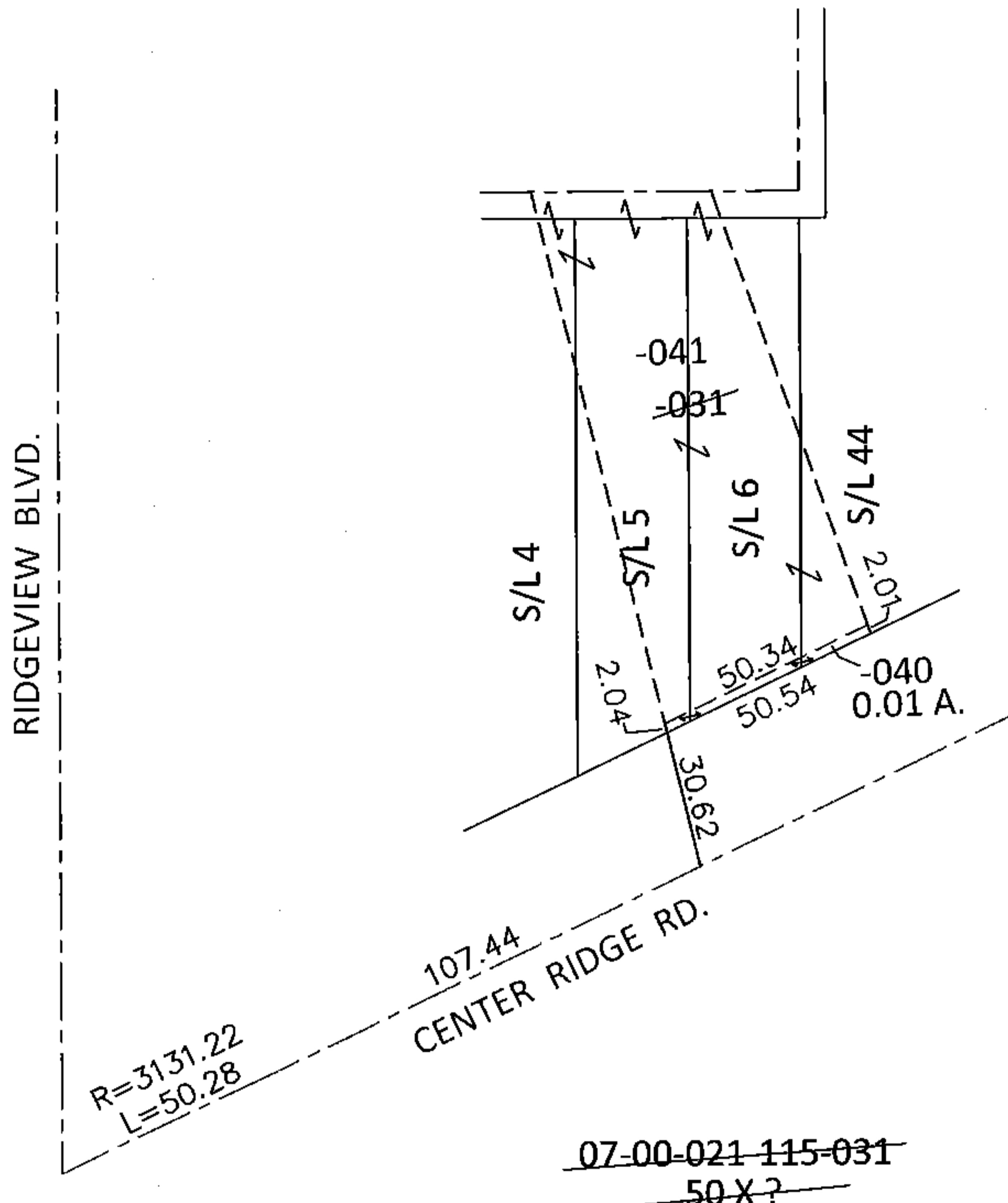
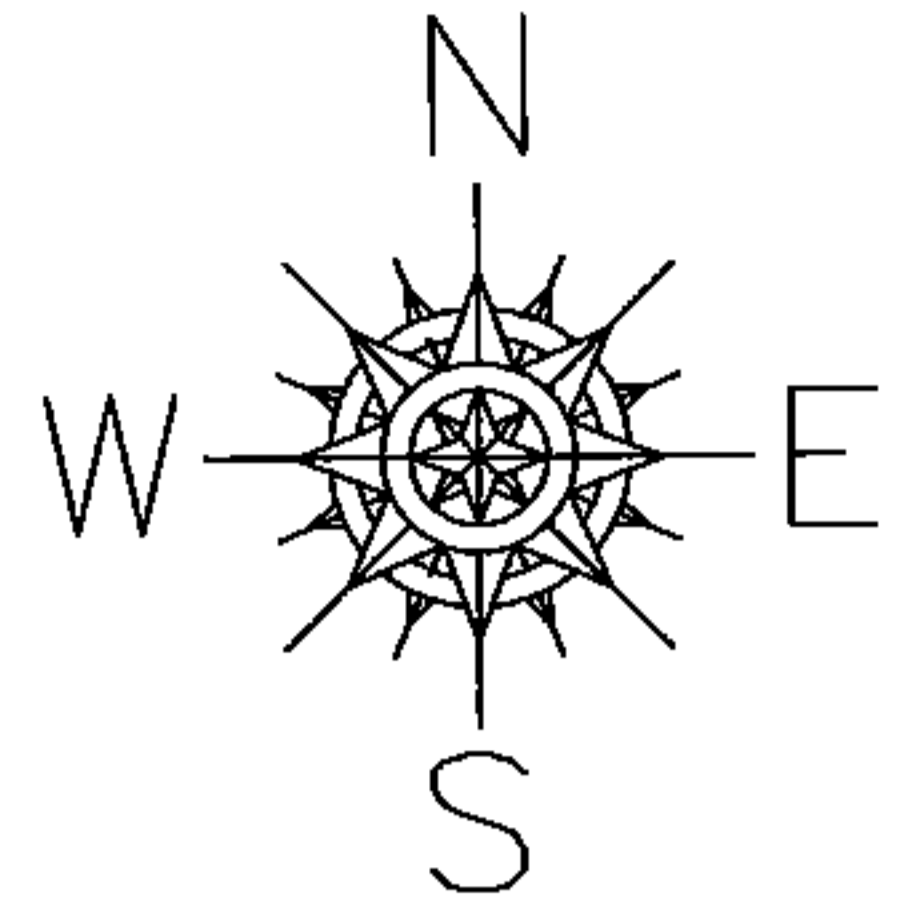
PARENT PARCEL: 07-00-021-115-031

CHILD PARCEL: 07-00-021-115-040, -041

STARTING POINT: INTERSECTION OF C/L OF CENTER RIDGE RD. AND C/L OF RIDGEVIEW BLVD.

14-00559

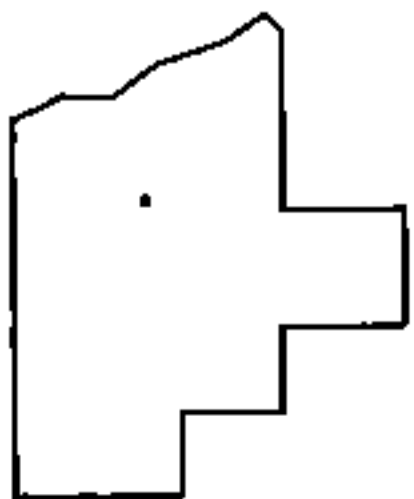
LOR-20-22.13  
86-WDV



07-00-021-115-040  
0.01 A.

07-00-021-115-041  
50.34 X ?

~~07-00-021-115-031~~  
~~50 X ?~~



SPLITS/DEEDS PROCESSED

LORAIN COUNTY TAX MAP DEPARTMENT  
226 MIDDLE AVE. ELYRIA, OHIO

SURVEYED BY: WILLIAM D. THOMAS

CLOSURE: .01:10.000

MAP PAGE(S): 7-00-021-B

APPROVED BY: RRM DATE: 9-12-14

SCALE: 1"= 50' PRIOR INST.: OR 32/158