

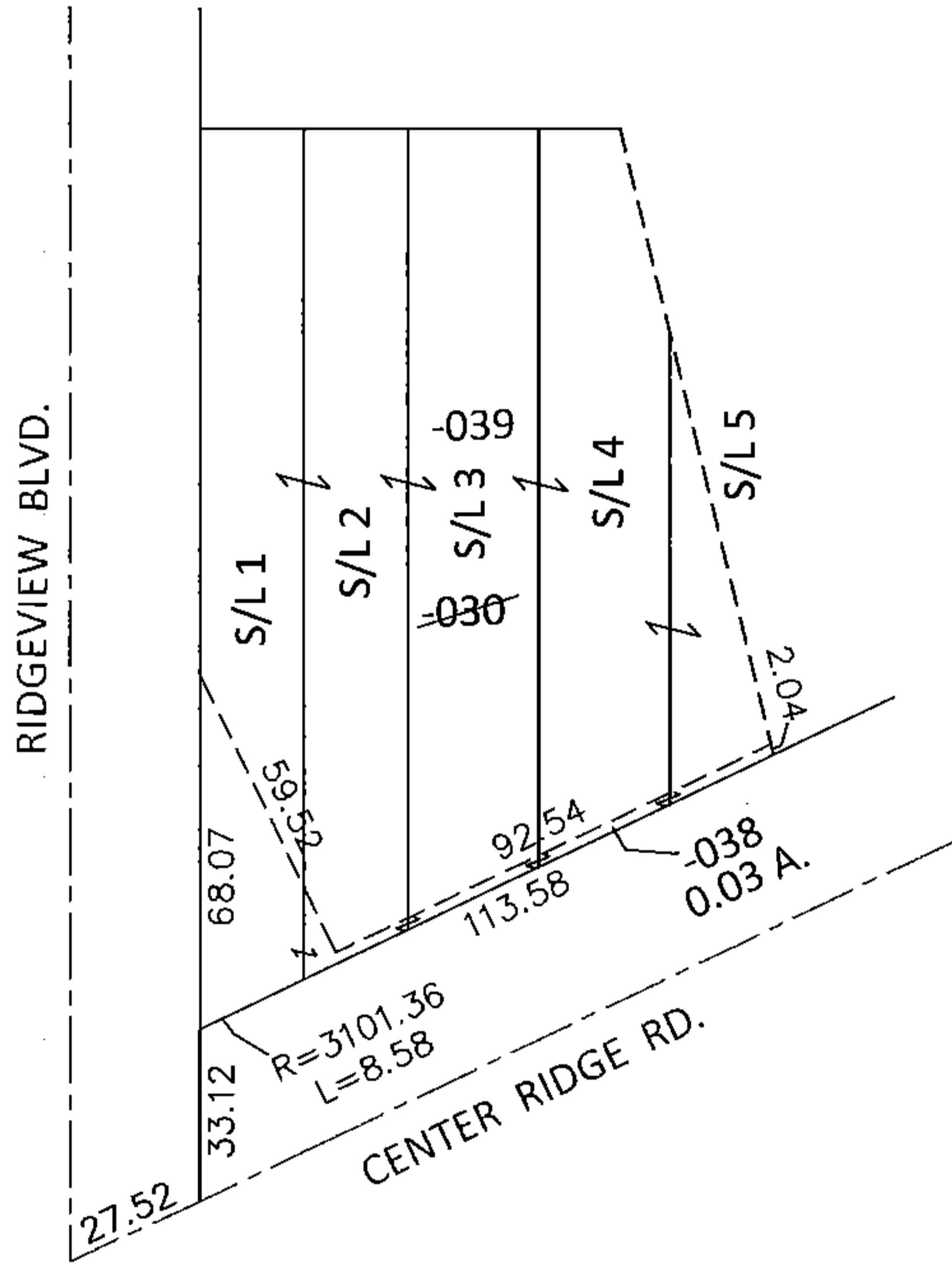
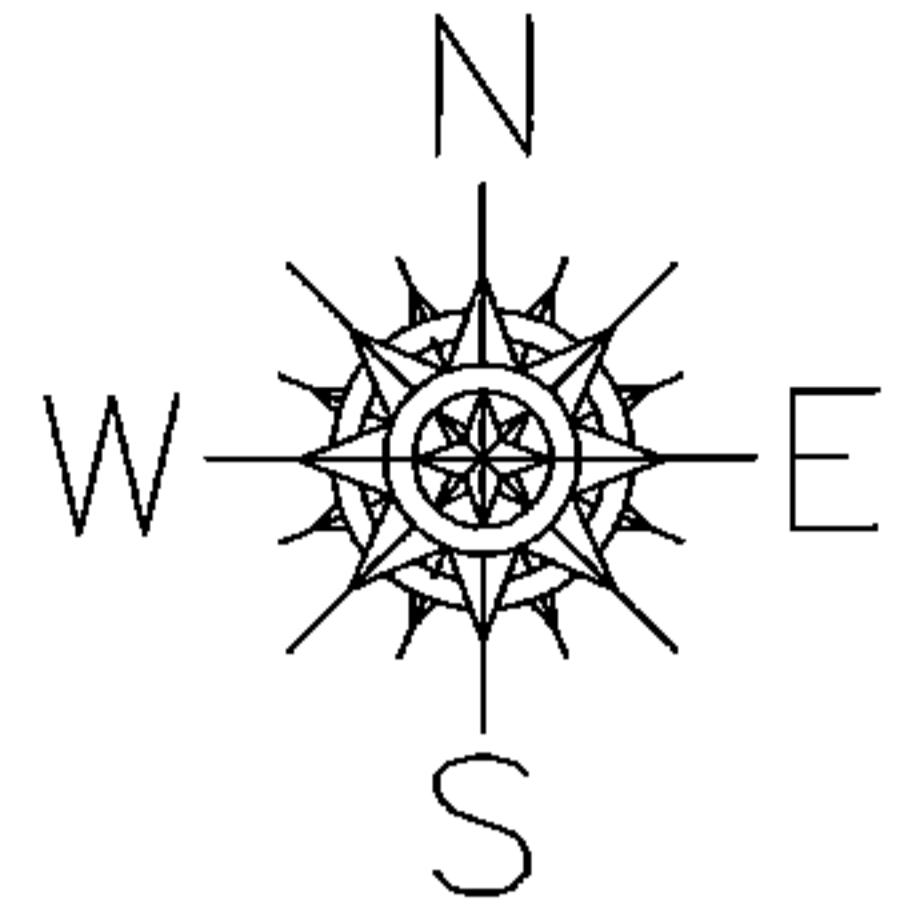
PARENT PARCEL: 07-00-021-115-030

CHILD PARCEL: 07-00-021-115-038, -039

STARTING POINT: INTERSECTION OF C/L OF CENTER RIDGE RD. AND C/L OF RIDGEVIEW BLVD.

14-00558

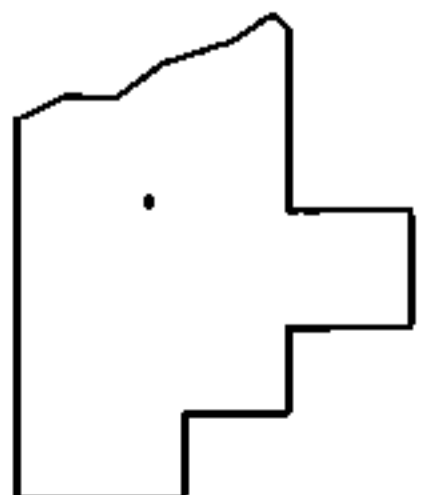
LOR-20-22.13
85-WDV



~~07-00-021-115-030~~
~~121.63 X IRR~~

07-00-021-115-038
0.03 A.

07-00-021-115-039
92.54 X 164.67



SPLITS/DEEDS PROCESSED

LORAIN COUNTY TAX MAP DEPARTMENT
226 MIDDLE AVE. ELYRIA, OHIO

SURVEYED BY: WILLIAM D. THOMAS

CLOSURE: .01:10,000

MAP PAGE(S): 7-00-021-B

APPROVED BY: RRM DATE: 9-9-14

SCALE: 1"=50' PRIOR INST.: OR 32/158