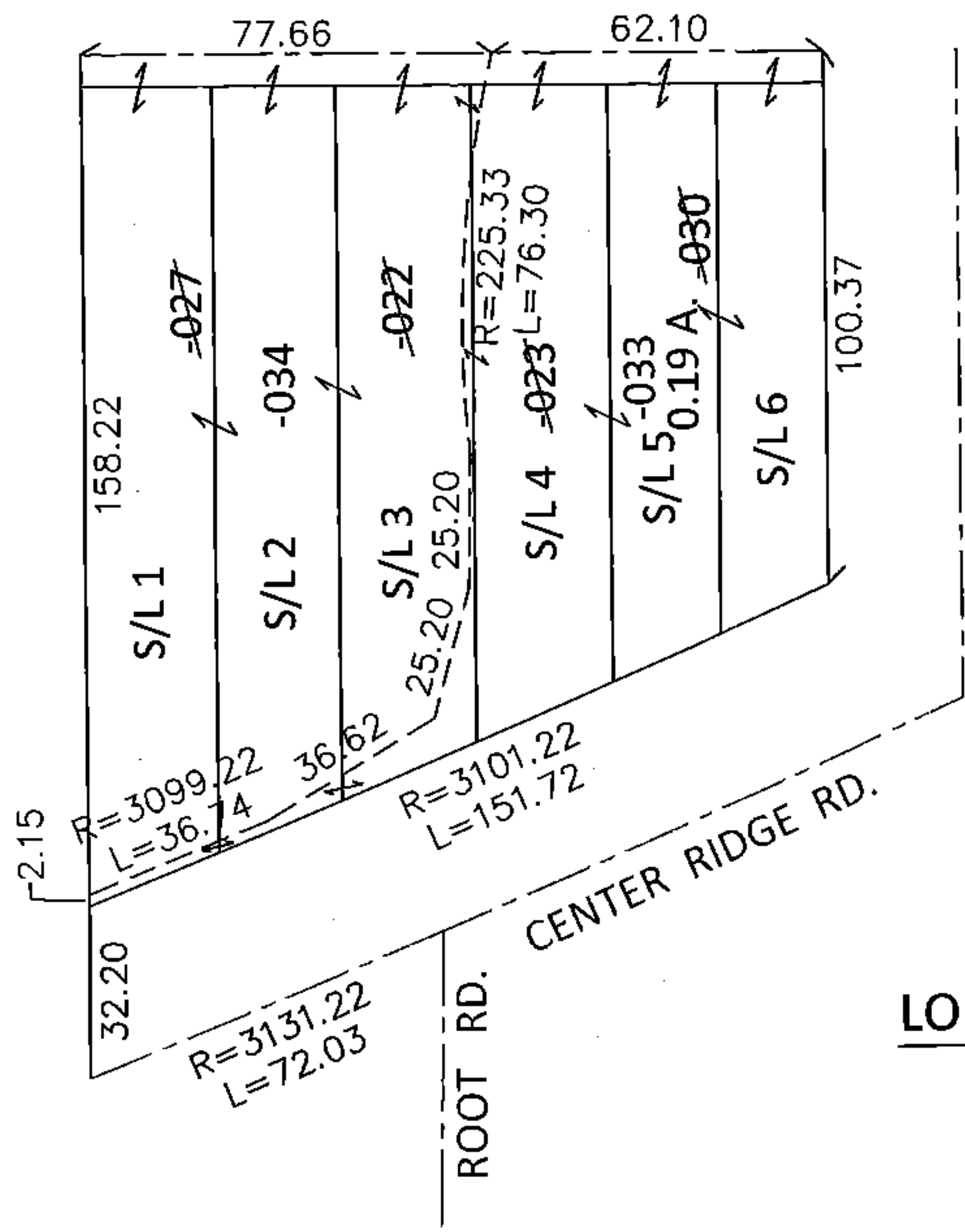
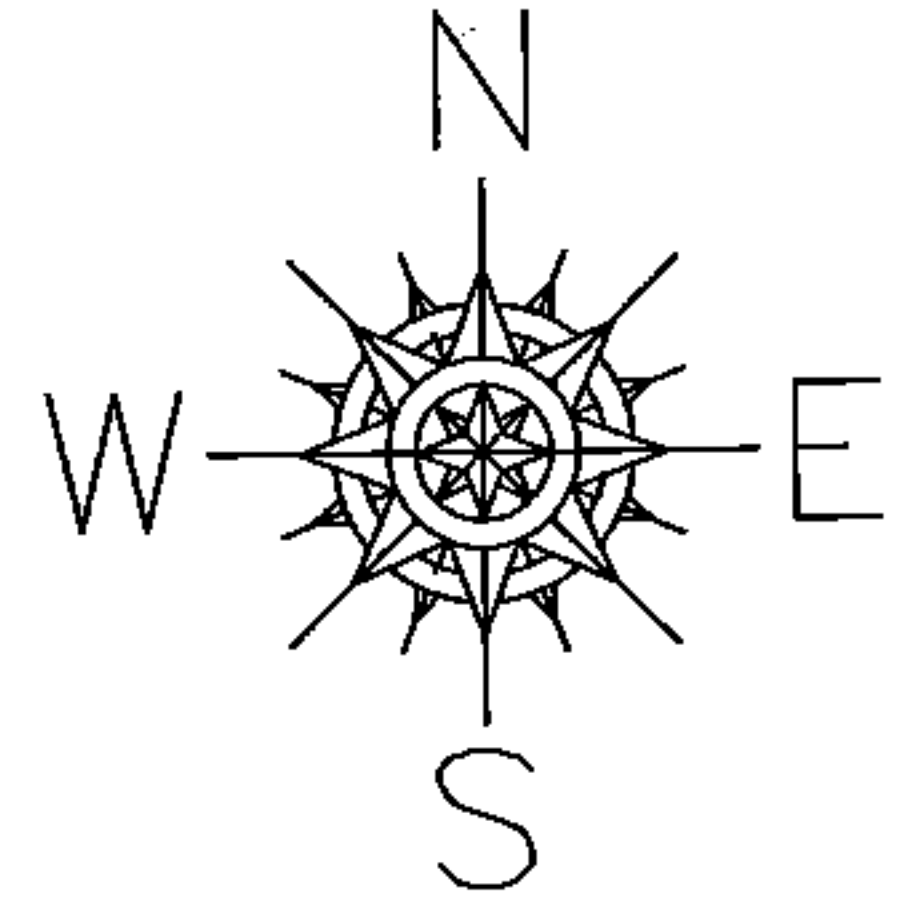


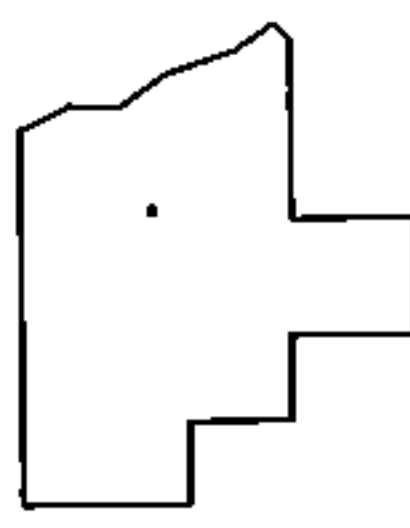
PARENT PARCEL: 07-00-021-114-022, -023, -027, -030
 CHILD PARCEL: 07-00-021-114-033, -034
 STARTING POINT: INTERSECTION OF C/L OF CENTER RIDGE RD. AND C/L OF ROOT RD.

14-00557



LOR-20-22.13
 81-WDV

- | | |
|---|-------------------------------------|
| 07-00-021-114-022
27.79 X 142 | 07-00-021-114-033
0.19 A. |
| 07-00-021-114-023
27.79 X 118 | 07-00-021-114-034
73.36 X 126.70 |
| 07-00-021-114-027
53.65 X 162.45 | |
| 07-00-021-114-030
44.47 X 108 | |



SPLITS/DEEDS PROCESSED
 LORAIN COUNTY TAX MAP DEPARTMENT
 226 MIDDLE AVE. ELYRIA, OHIO

SURVEYED BY: WILLIAM D. THOMAS
 CLOSURE: .01:10,000
 MAP PAGE(S): 7-00-021-B
 APPROVED BY: RRM DATE: 10-1-14
 SCALE: 1" = 50' PRIOR INST.: 20110384729