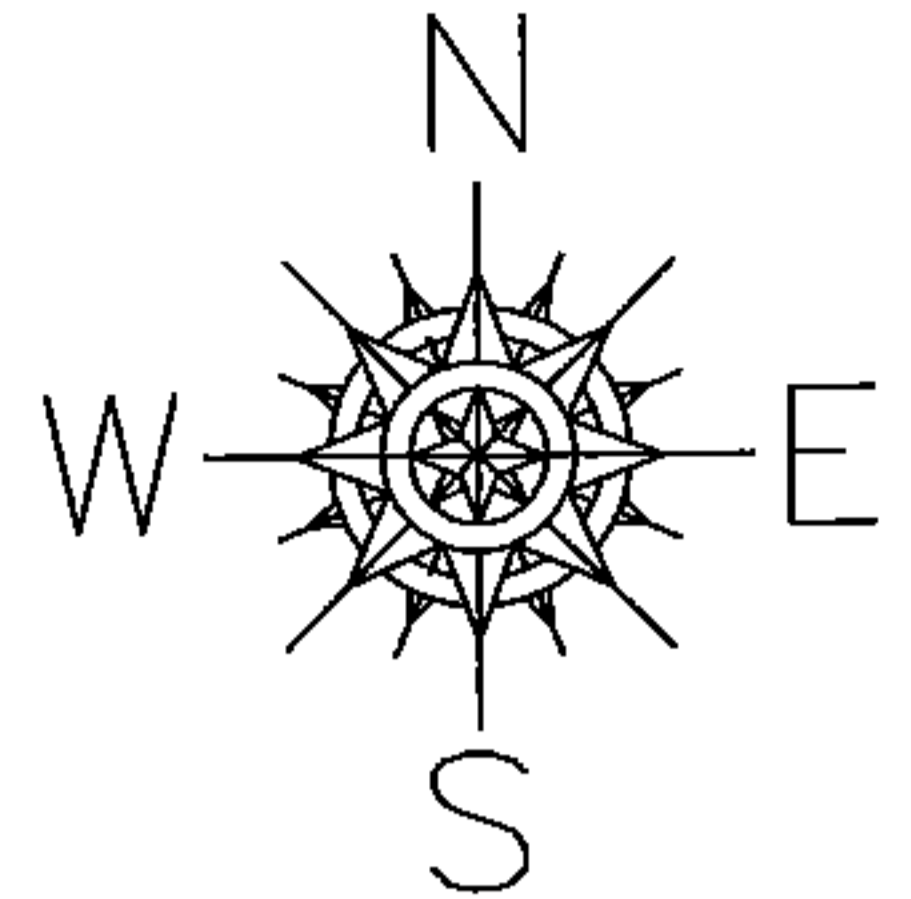


PARENT PARCEL: 07-00-021-113-006

CHILD PARCEL: 07-00-021-113-013, -014

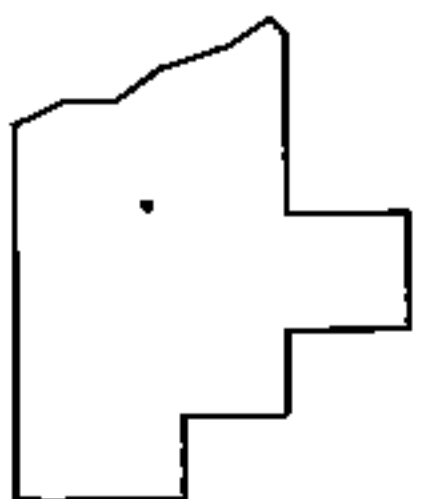
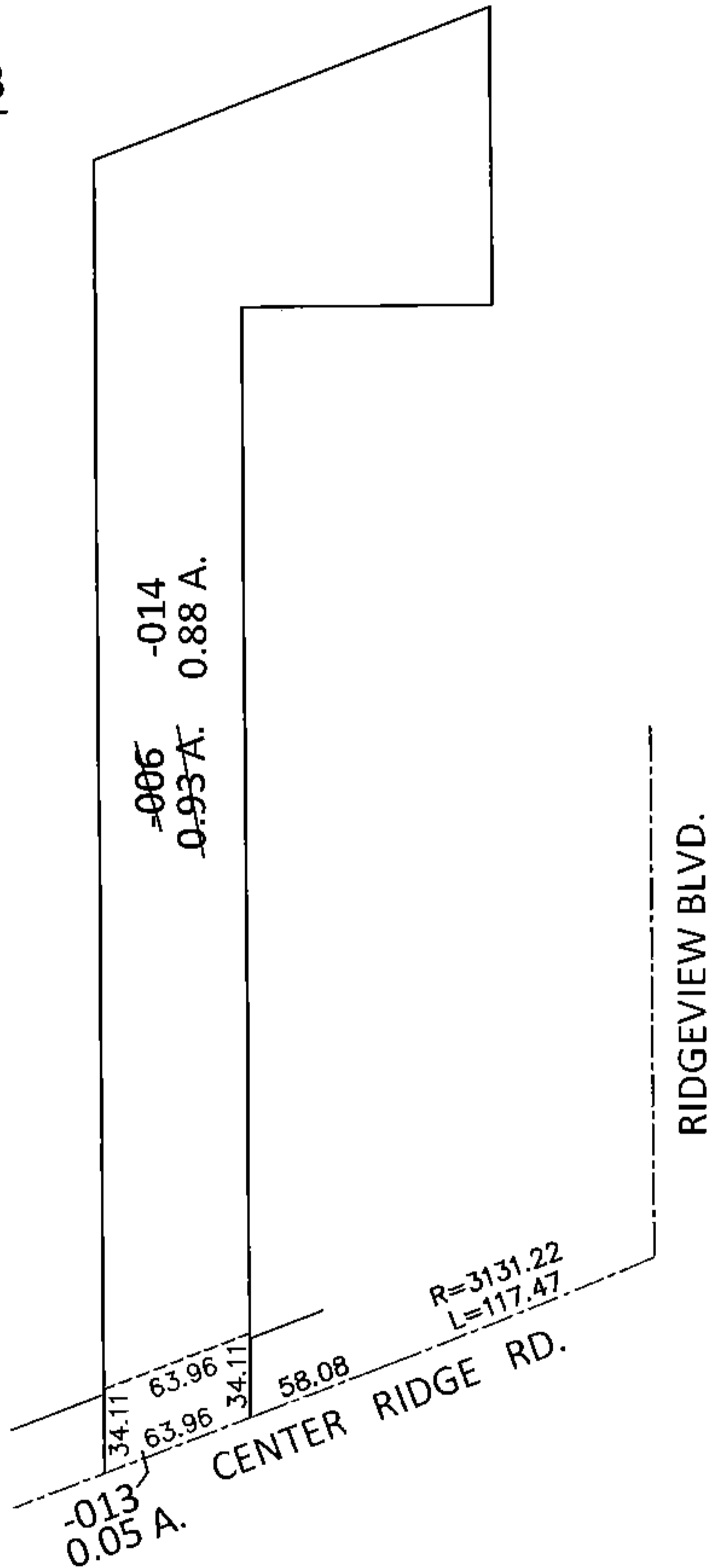
STARTING POINT: INTERSECTION OF C/L OF CENTER RIDGE RD. AND C/L OF RIDGEVIEW BLVD.

14-00555



LOR-20-22.13

79-WDV



SPLITS/DEEDS PROCESSED

LORAIN COUNTY TAX MAP DEPARTMENT
226 MIDDLE AVE. ELYRIA, OHIO

SURVEYED BY: WILLIAM D. THOMAS

CLOSURE: .01:10,000

MAP PAGE(S): 7-00-021-A

APPROVED BY: RRM DATE: 9-5-14

SCALE: 1"= 100 PRIOR INST.: OR 52/890