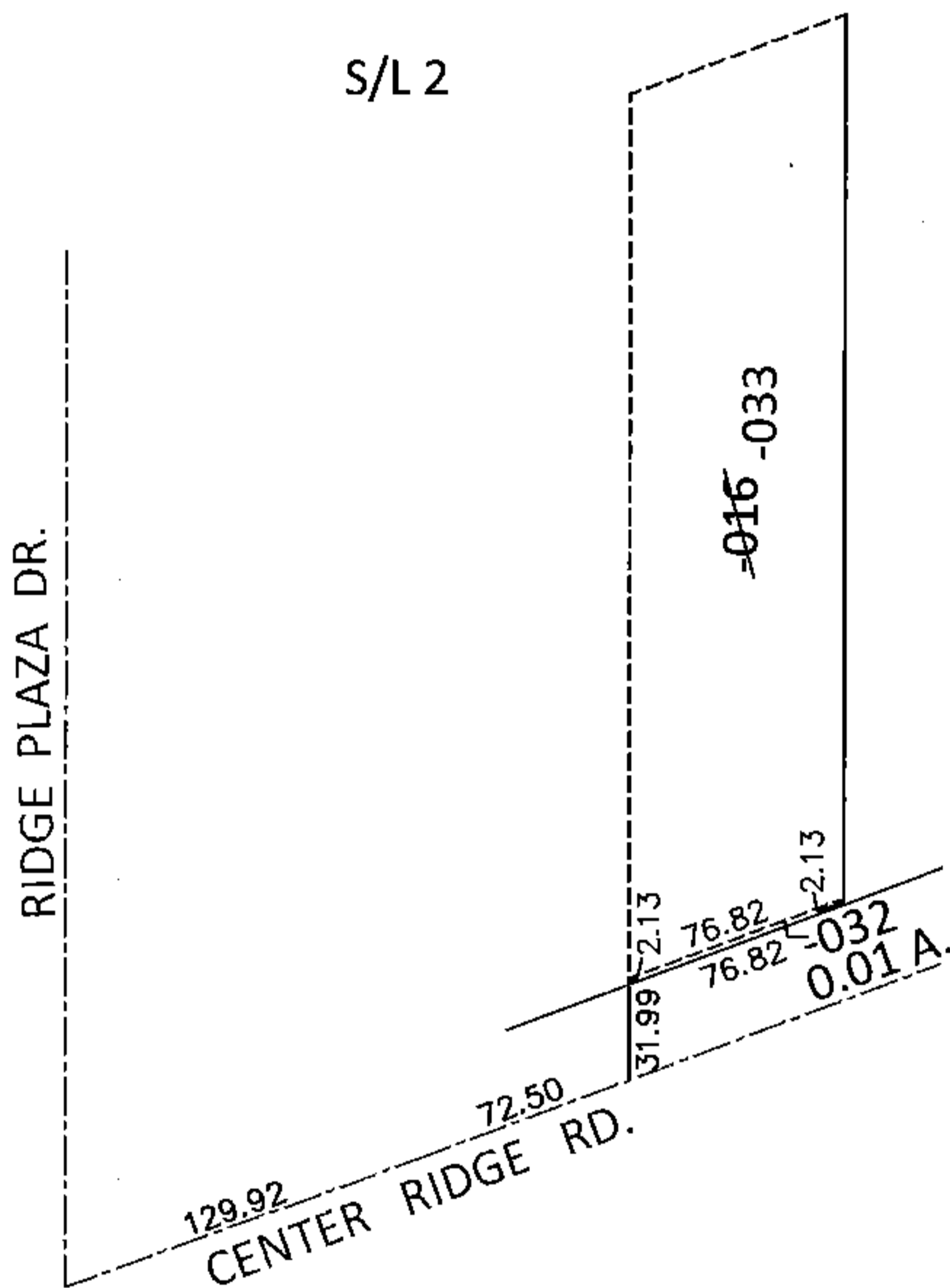
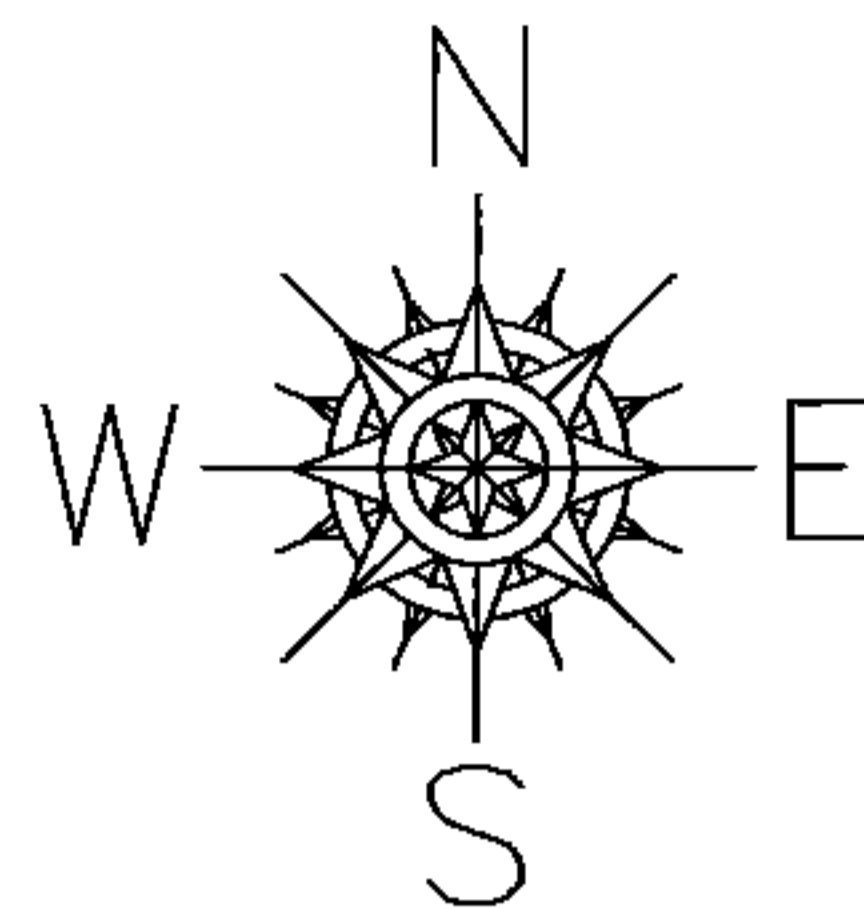


PARENT PARCEL: 07-00-021-104-016

CHILD PARCEL: 07-00-021-104-032, -033

STARTING POINT: INTERSECTION OF C/L OF CENTER RIDGE RD. AND C/L OF RIDGE PLAZA DR.

14-00552



LOR-20-22.13

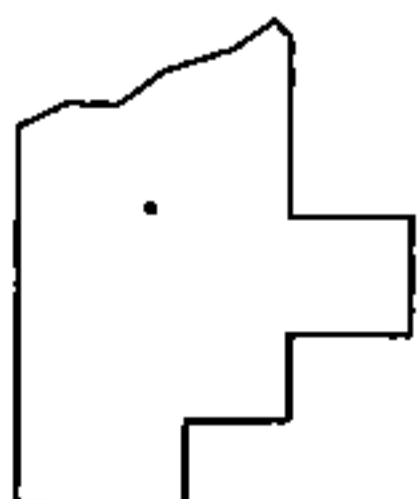
76-WDV

~~07-00-021-104-016~~

~~77 X 300~~

07-00-021-104-032
0.01 A.

07-00-021-104-033
76.82 X 297.87



SPLITS/DEEDS PROCESSED

LORAIN COUNTY TAX MAP DEPARTMENT
226 MIDDLE AVE. ELYRIA, OHIO

SURVEYED BY: WILLIAM D. THOMAS

CLOSURE: .01:10,000

MAP PAGE(S): 7-00-021-A

APPROVED BY: RRM DATE: 9-5-14

SCALE: 1"= 100 PRIOR INST.: 20010800966