

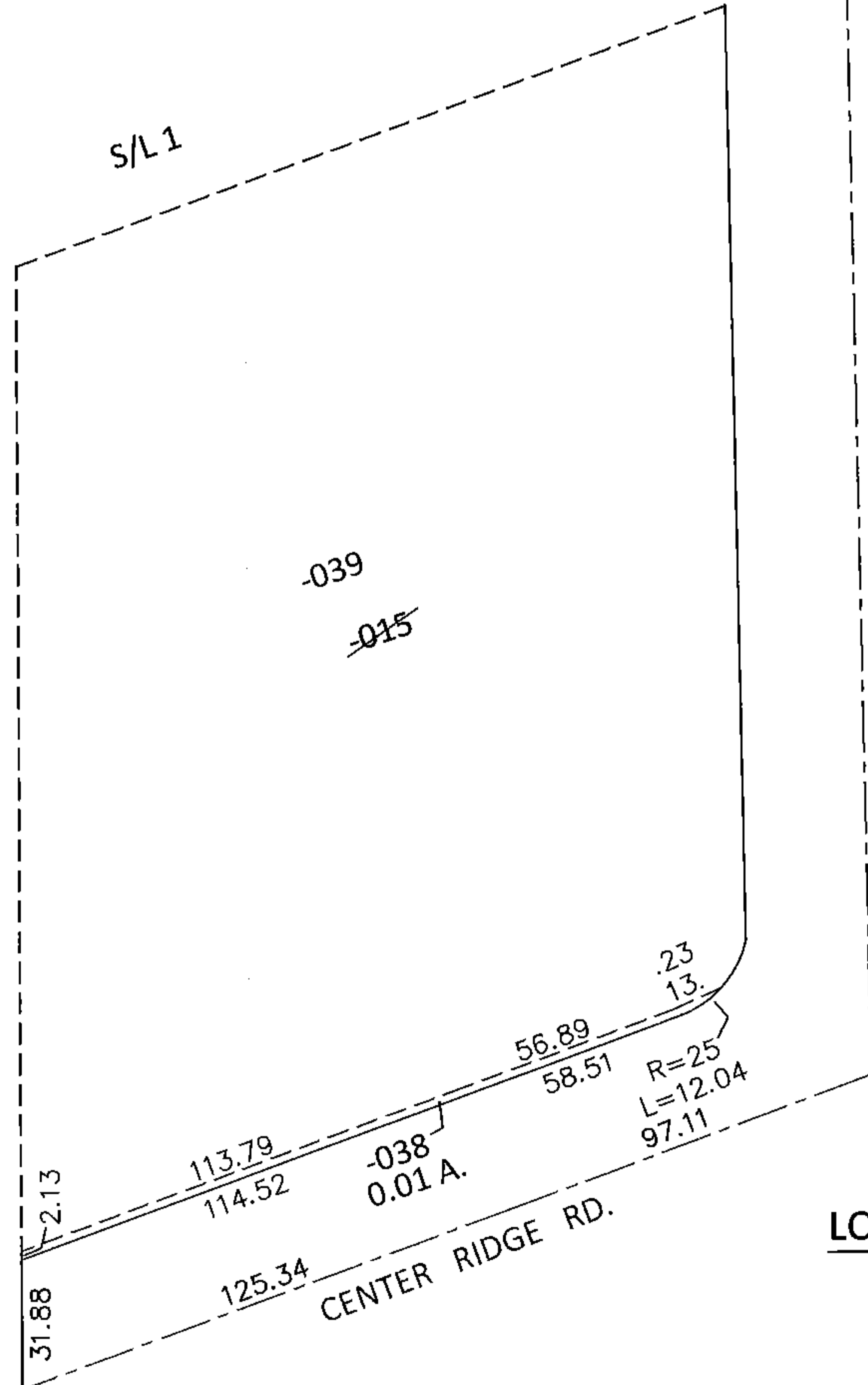
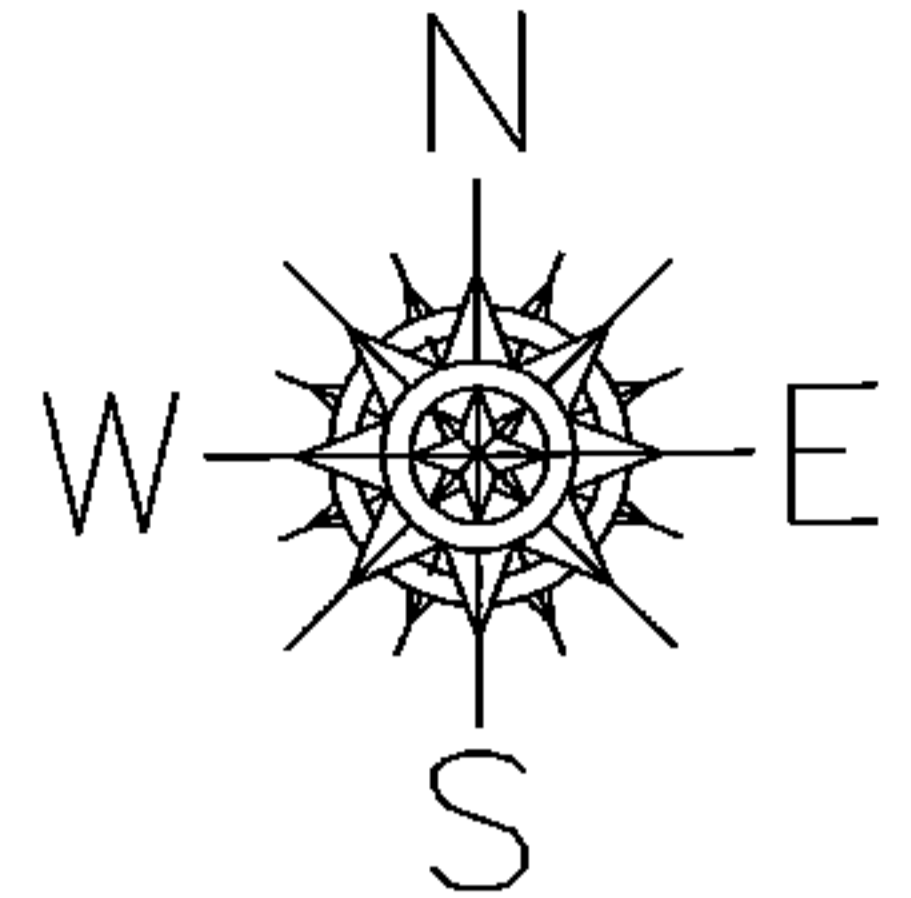
PARENT PARCEL: 07-00-021-103-015

CHILD PARCEL: 07-00-021-103-038, -039

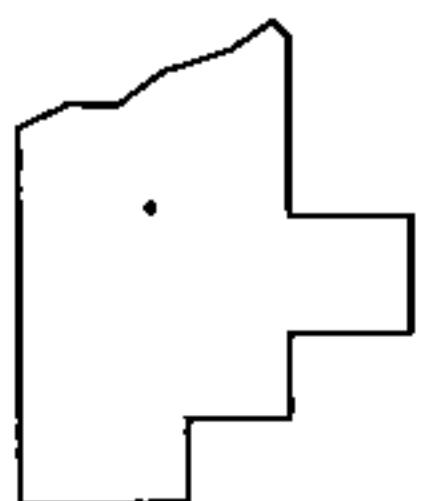
STARTING POINT: INTERSECTION OF C/L OF CENTER RIDGE RD. AND C/L OF RIDGE PLAZA DR.

14-00550

~~07-00-021-103-015~~
~~203.50 X 244.00~~
07-00-021-103-038 07-00-021-103-039
0.01 A. 203.50 X 241.87



LOR-20-22.13
74-WDV



SPLITS/DEEDS PROCESSED

LORAIN COUNTY TAX MAP DEPARTMENT
226 MIDDLE AVE. ELYRIA, OHIO

SURVEYED BY: WILLIAM D. THOMAS
CLOSURE: .01:10,000
MAP PAGE(S): 7-00-021-A
APPROVED BY: RRM DATE: 9-4-14
SCALE: 1" = 50' PRIOR INST.: 20050061793