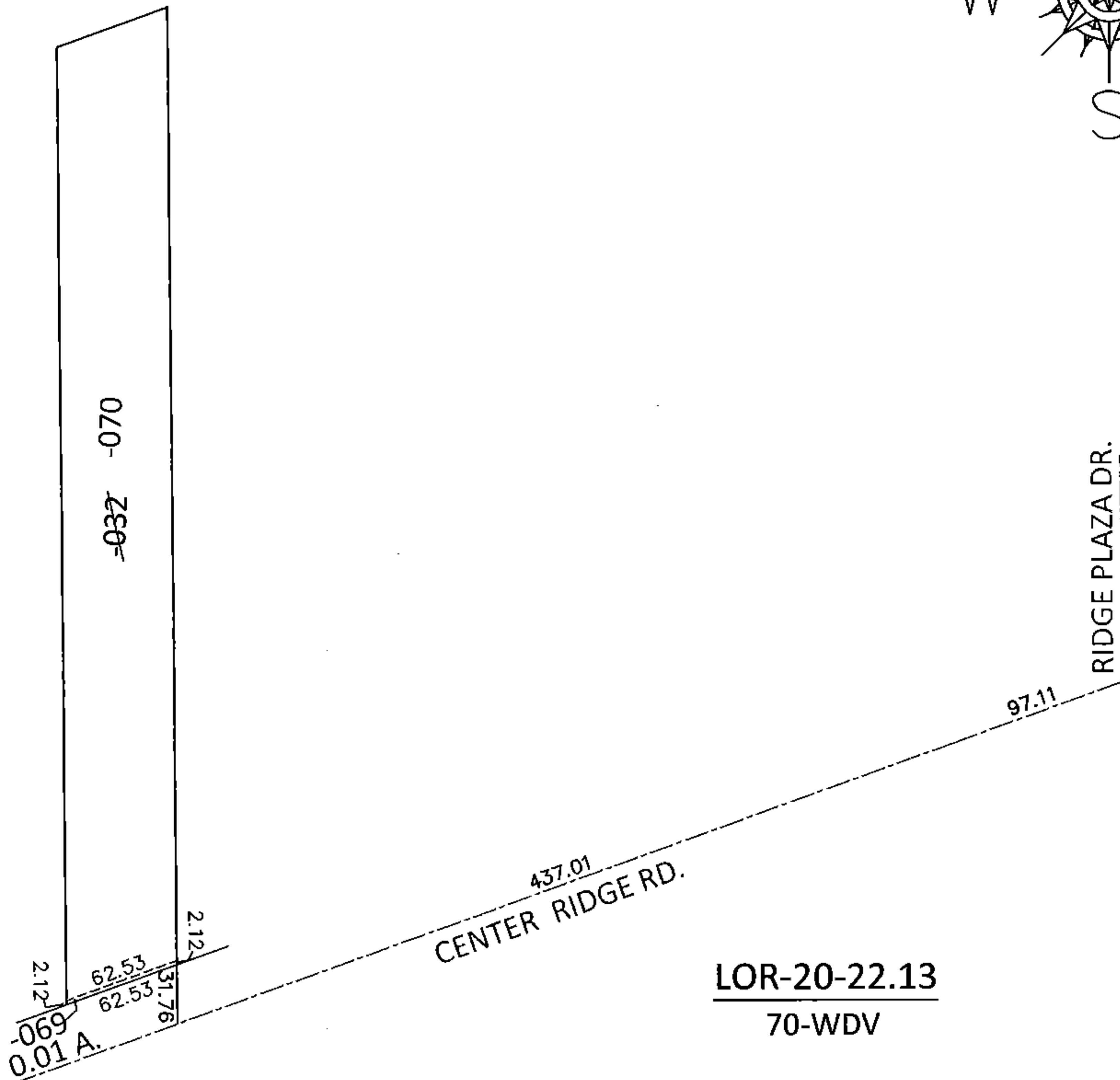
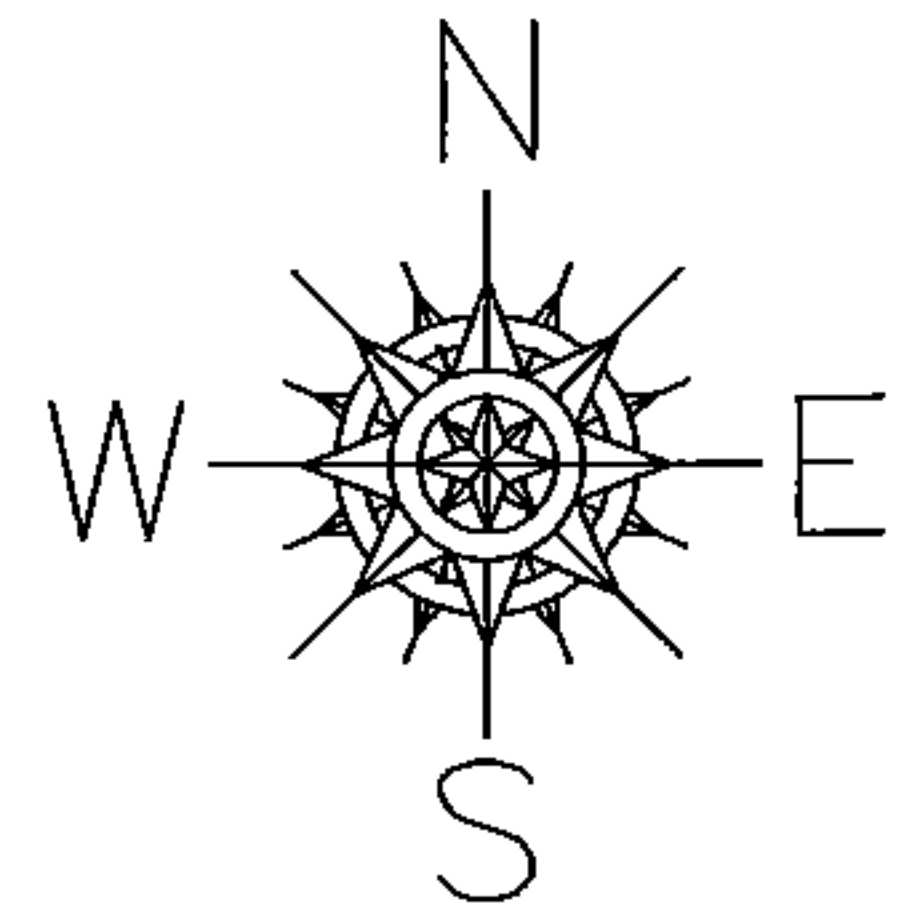


PARENT PARCEL: 07-00-021-101-032

CHILD PARCEL: 07-00-021-101-069, -070

STARTING POINT: INTERSECTION OF C/L OF AVON - BELDEN RD. AND C/L OF CENTER RIDGE RD.

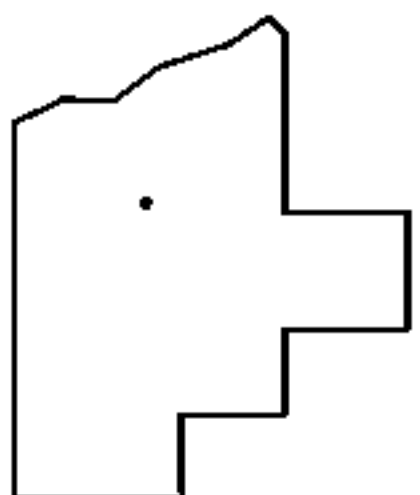
14-00546



LOR-20-22.13
70-WDV

~~07-00-021-101-032~~
~~60 X 510~~

07-00-021-101-069 07-00-021-101-070
0.01 A. 62.53 X 507.88



SPLITS/DEEDS PROCESSED

LORAIN COUNTY TAX MAP DEPARTMENT
226 MIDDLE AVE. ELYRIA, OHIO

SURVEYED BY: WILLIAM D. THOMAS

CLOSURE: .01:10,000

MAP PAGE(S): 7-00-021-C

APPROVED BY: RRM DATE: 9-4-14

SCALE: 1"= 100 PRIOR INST.: 20060166799