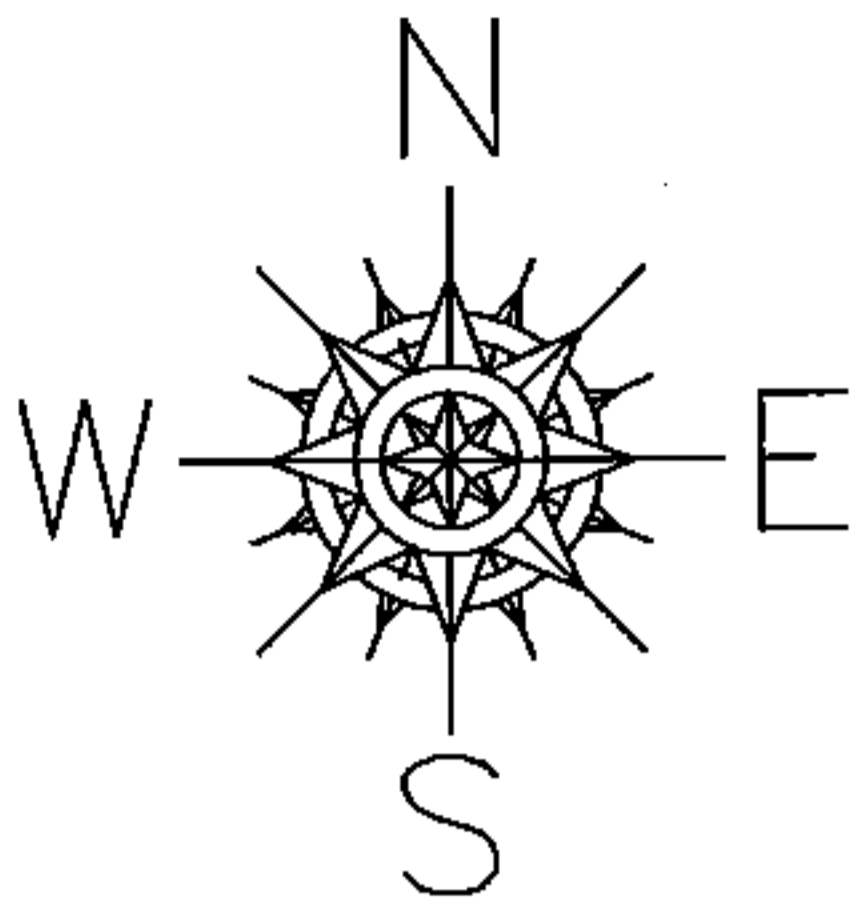


PARENT PARCEL: 07-00-021-102-038

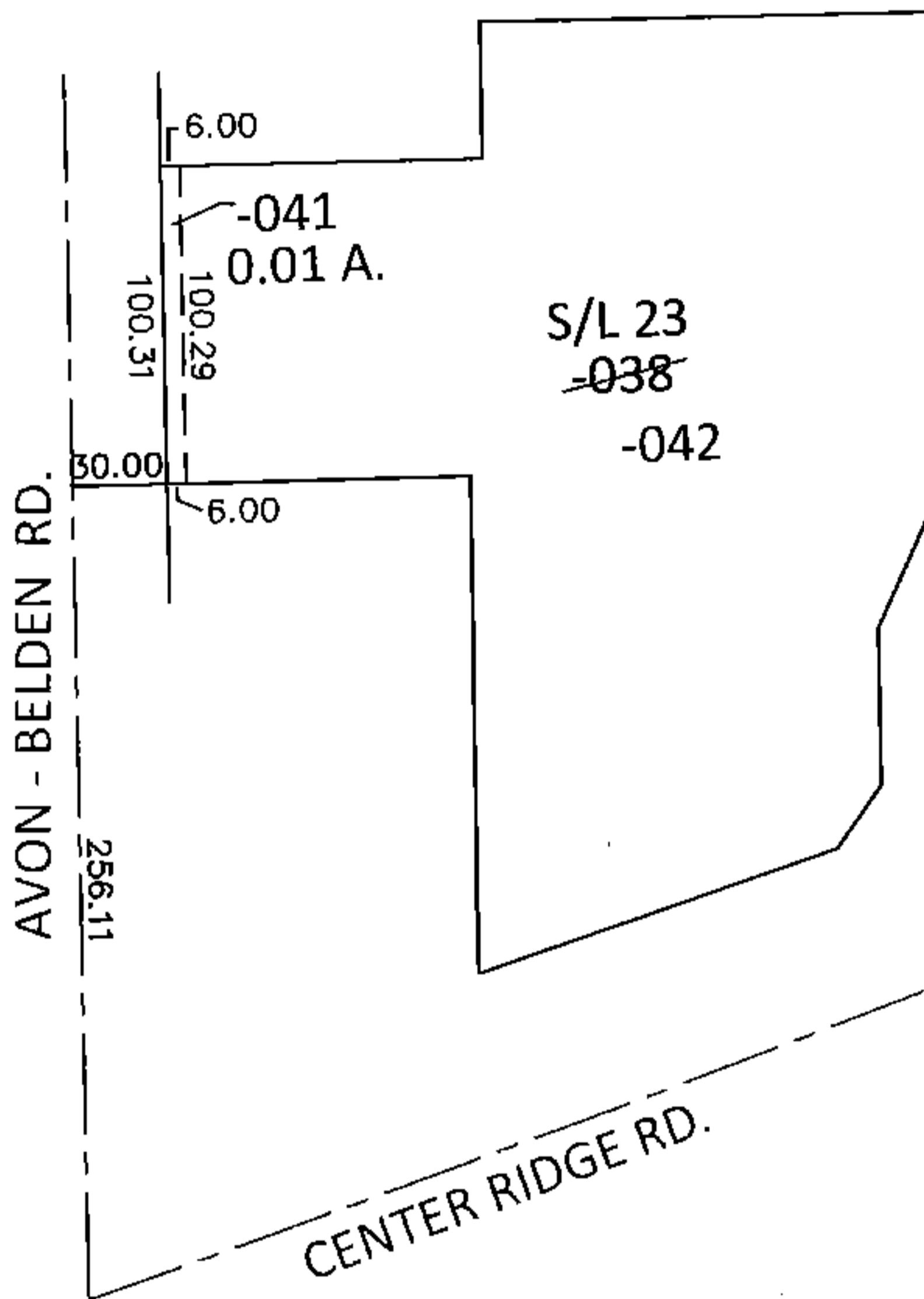
CHILD PARCEL: 07-00-021-102-041, -042

STARTING POINT: INTERSECTION OF C/L OF CENTER RIDGE RD. AND C/L OF AVON - BELDEN RD.

14-00539



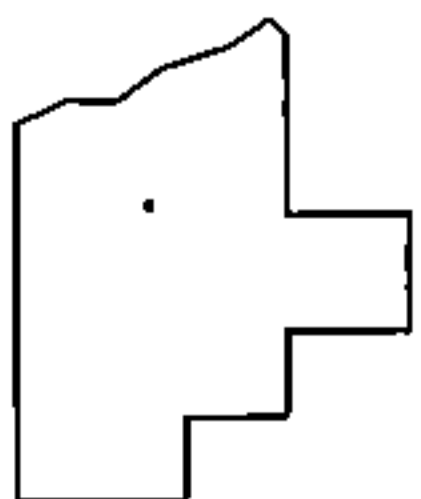
LOR-20-22.13  
64-WDV



~~07-00-021-102-038~~  
~~145.18 X 248.21 IRR~~

07-00-021-102-041  
0.01 A.

07-00-021-102-042  
145.18 X 248.21 IRR



**SPLITS/DEEDS PROCESSED**

LORAIN COUNTY TAX MAP DEPARTMENT  
226 MIDDLE AVE. ELYRIA, OHIO

SURVEYED BY: WILLIAM D. THOMAS

CLOSURE: .01:10,000

MAP PAGE(S): 7-00-021-C

APPROVED BY: RRM DATE: 9-3-14

SCALE: 1"= 100 PRIOR INST.: 20120416890