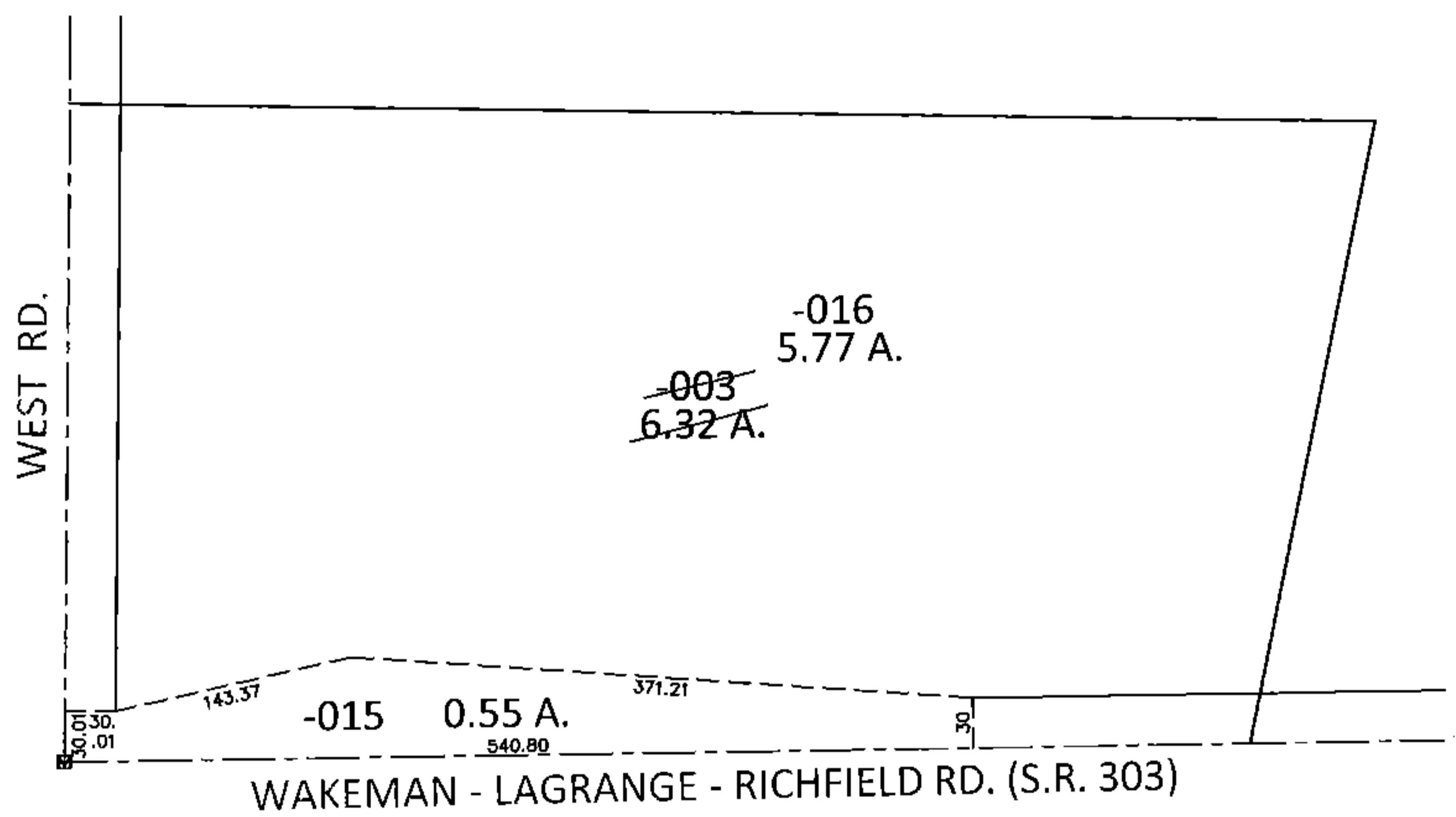
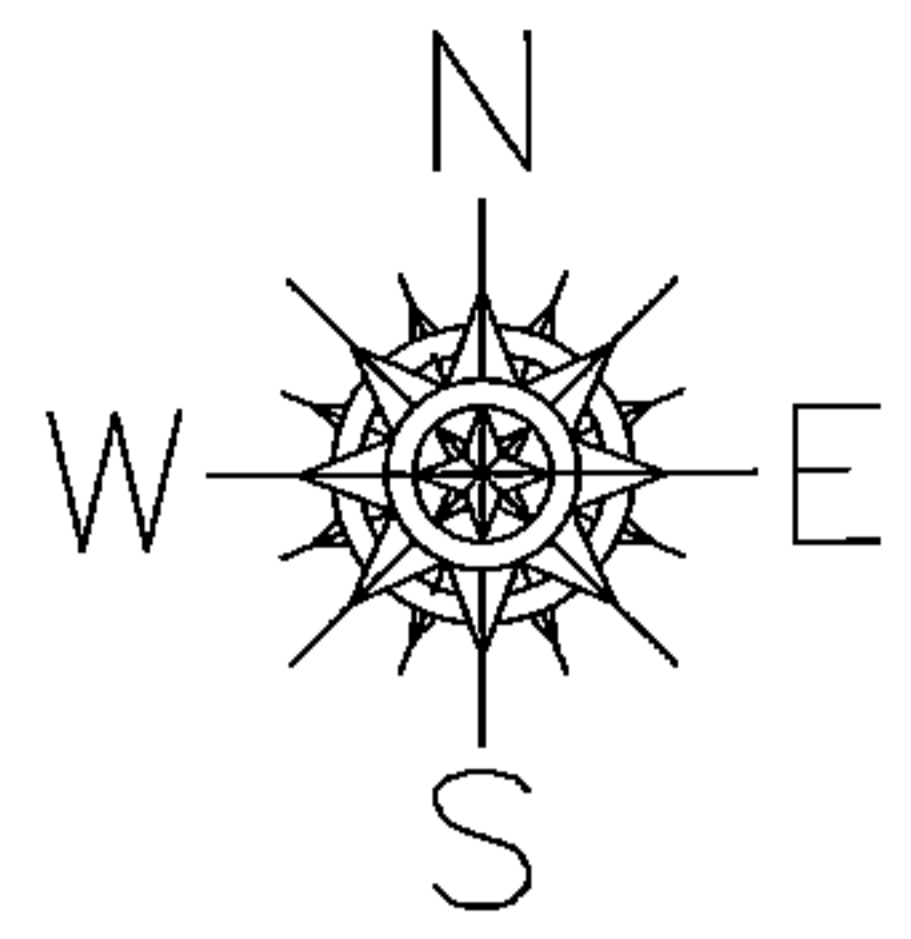
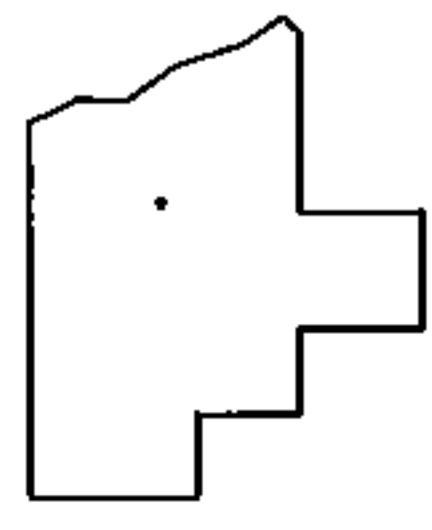


PARENT PARCEL: 14-00-080-000-003
CHILD PARCEL: 14-00-080-000-015, -016
STARTING POINT: AT A MON BOX AT THE INTERSECTION OF C/L OF S.R. 303 AND C/L OF WEST RD.

14-00478



LOR-303-8.42
12-WD



SPLITS/DEEDS PROCESSED
LORAIN COUNTY TAX MAP DEPARTMENT
226 MIDDLE AVE. ELYRIA, OHIO

SURVEYED BY: RAYMOND W. FOOS
CLOSURE: .01:10,000
MAP PAGE(S): 14-D
APPROVED BY: RRM DATE: 4-22-14
SCALE: 1"= 150' PRIOR INST.: 20000676513