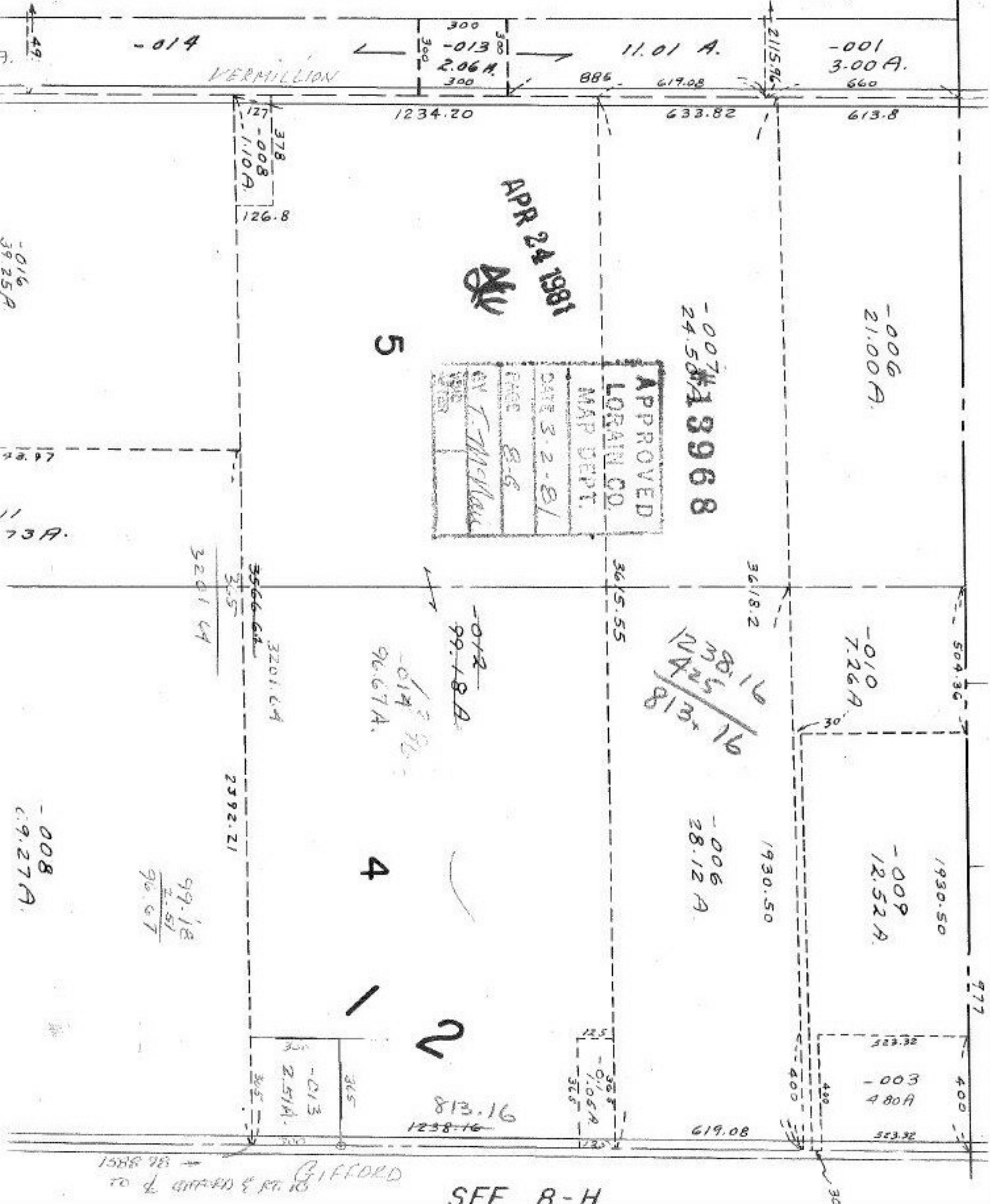


SEE 8-F

#13968



-014

VERMILLION

300
-013
2.06 A.
300

11.01 A.

-001
3.00 A.
660

1234.20

633.82

613.8

378
-008
110 A.
126.8

APR 24 1981

APPROVED
LORAIN CO.
MAP DEPT.
DATE 3-2-81
PAGE 8-6
BY T. McManis
CHECKED
DATE

-007
24.58 A
13968

-006
21.00 A.

5

3201.64

3566.64
3201.64
3.5

3615.55

3618.2

509.36

-012
99.18 A.

-014
96.67 A.

85.16
85.16
170.32
135.16

-010
7.26 A.

1930.50

-009
12.52 A.

4

99.18
7.51
96.67

2592.21

-006
28.12 A.

1930.50

977

2

813.16
1238.16

36.5
-0105 A.
36.5

-003
4.80 A.

-013
2.51 A.

619.08

523.32

1588 981
to GIFFORD & CO. 10

SEE 8-H