

810
T11

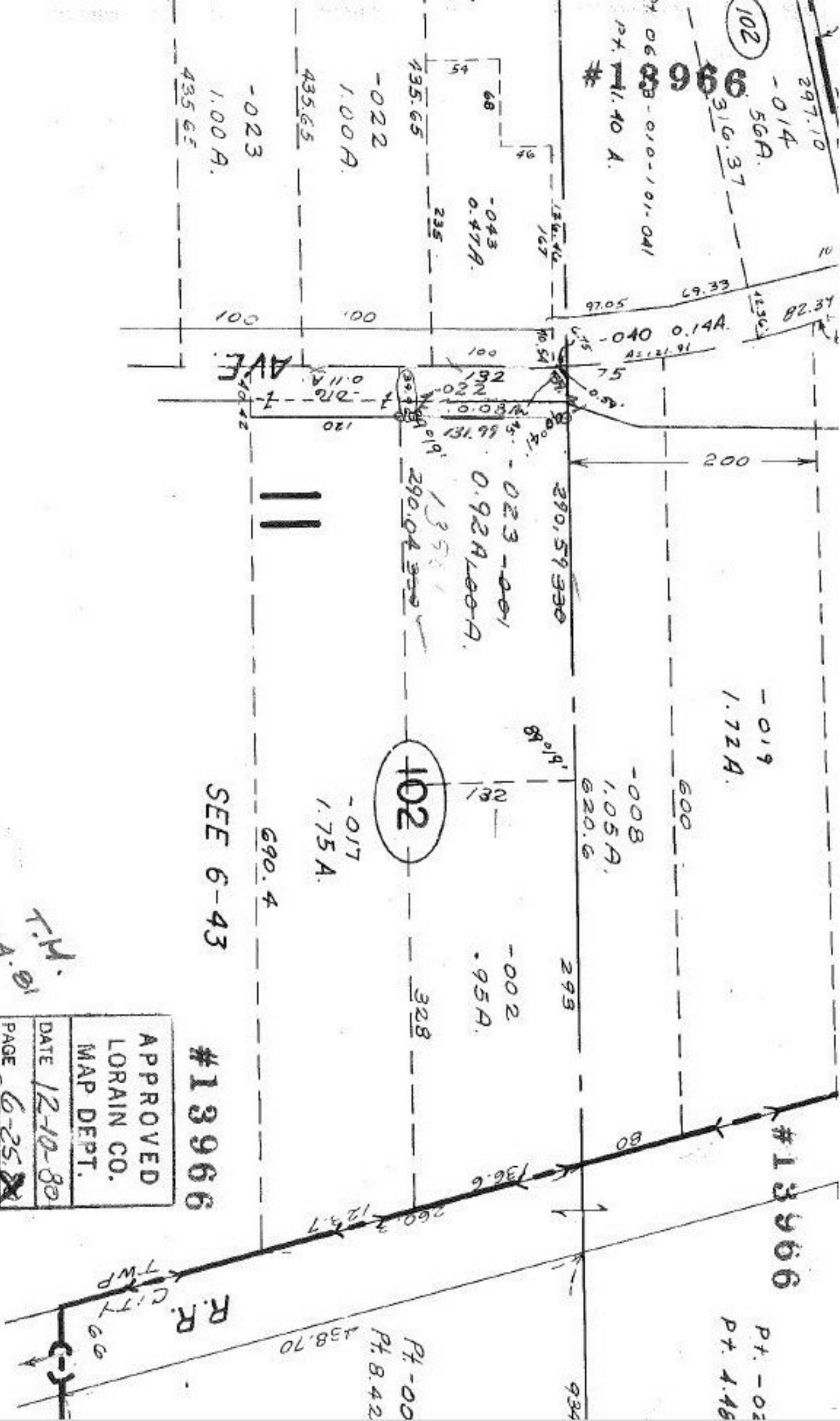
ELYRIA
CITY

TWP.

APPROVED	
LORAIN CO.	
MAP DEPT.	
DATE	12-10-80
PAGE	6-25
BY	Carolyn F
VOID AFTER	13966

#13966

SEE 6-43



Pt. -02
Pt. 4.48

Pt. -00
Pt. 8.42

438.70

R.R. CITY TWP

C-3