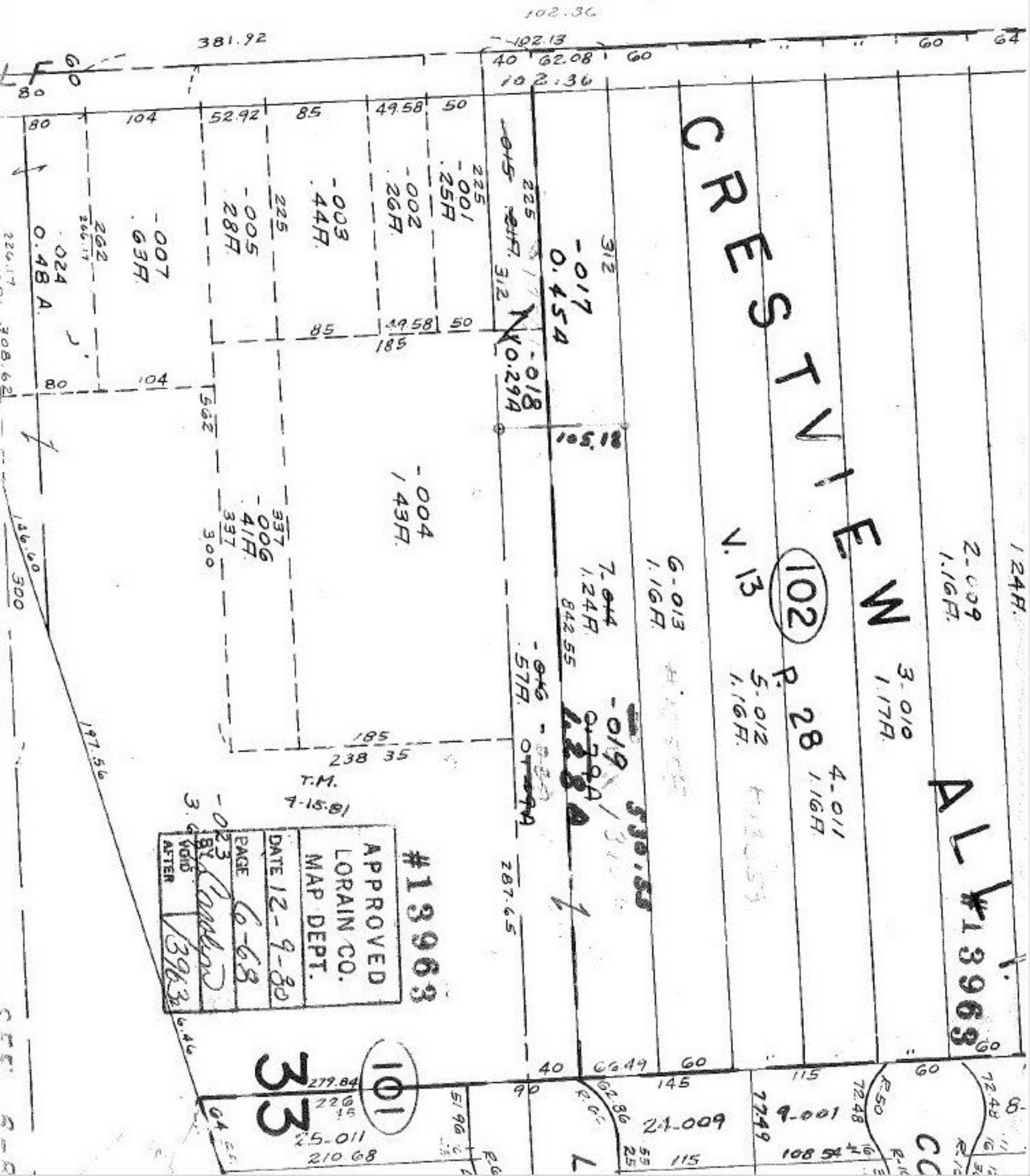


#13963



CRESTVIEW  
 N. 13  
 (102)

124H  
 2.009  
 1.16H.

AL #13963

3.010  
 1.17H.

P. 28  
 1.16H.

5.012  
 1.16H.

4.011  
 1.16H.

6.013  
 1.16H.

7.014  
 1.24H.

842.55

0.576  
 0.57H.

287.65

0.004  
 1.43H.

0.003  
 4.44H.

0.005  
 2.8H.

0.007  
 6.3H.

0.024  
 0.48 A.

#13963

APPROVED  
 LORAIN CO.  
 MAP DEPT.

DATE 12-9-80

PAGE 6-68

BY *[Signature]*

VOID AFTER 13963

101  
 33

25.011  
 210.68

21.009

7749

9.001  
 108.54  
 15.801

CC