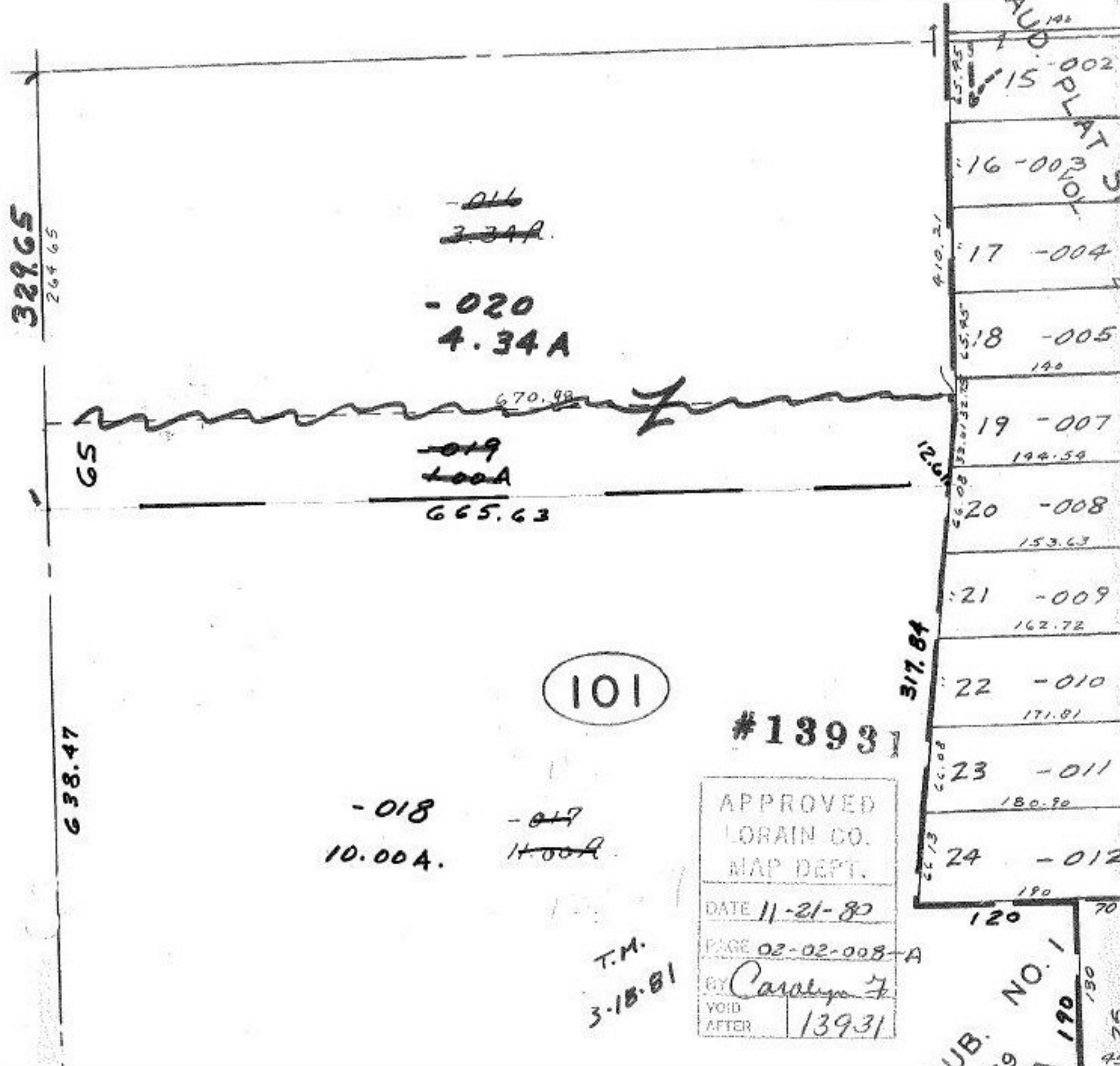


#13931

# COMBINATION

SEE 2-02-013A



329.65  
264.65

~~-016~~  
~~3.34A.~~

-020  
4.34A

~~-019~~  
~~1.00A~~

665.63

101

-018  
10.00A.

~~-017~~  
~~11.00A.~~

T.M.  
3-18-81

#13931

APPROVED	
LORAIN CO.	
MAP DEPT.	
DATE	11-21-80
PAGE	02-02-008-A
BY	Carolyn F.
VOID AFTER	13931

15-002	190
16-003	190
17-004	190
18-005	190
19-007	194.59
20-008	153.63
21-009	162.72
22-010	171.81
23-011	180.90
24-012	190

UB. NO. 1  
190  
190  
190