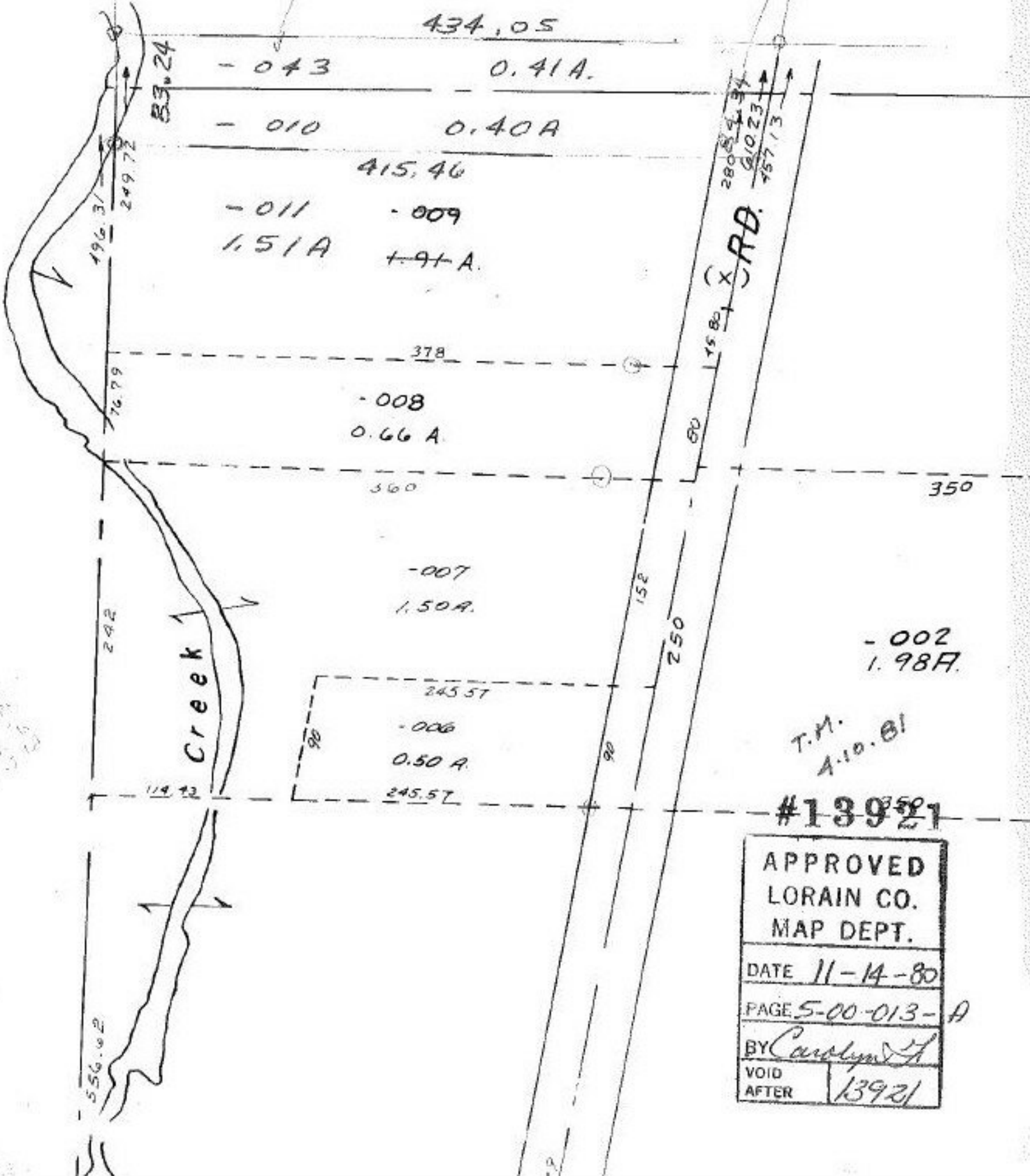


#13921

-043
THIS IS A
STRAIGHT
TRANSFER
(PREVIOUSLY OUT)

5.00.014-A

along
centerline



83.24

434.05

- 043

0.41A.

- 010

0.40A

415.46

- 011

- 009

1.51A

1.91A.

378

- 008

0.66A

360

- 007

1.50A.

245.57

- 006

0.50A

245.57

- 002
1.98A.

T.M.
A.10.81

#13921

APPROVED
LORAIN CO.
MAP DEPT.

DATE 11-14-80

PAGE 5-00-013-A

BY Carolyn A.

VOID AFTER 13921

LORAIN COUNTY