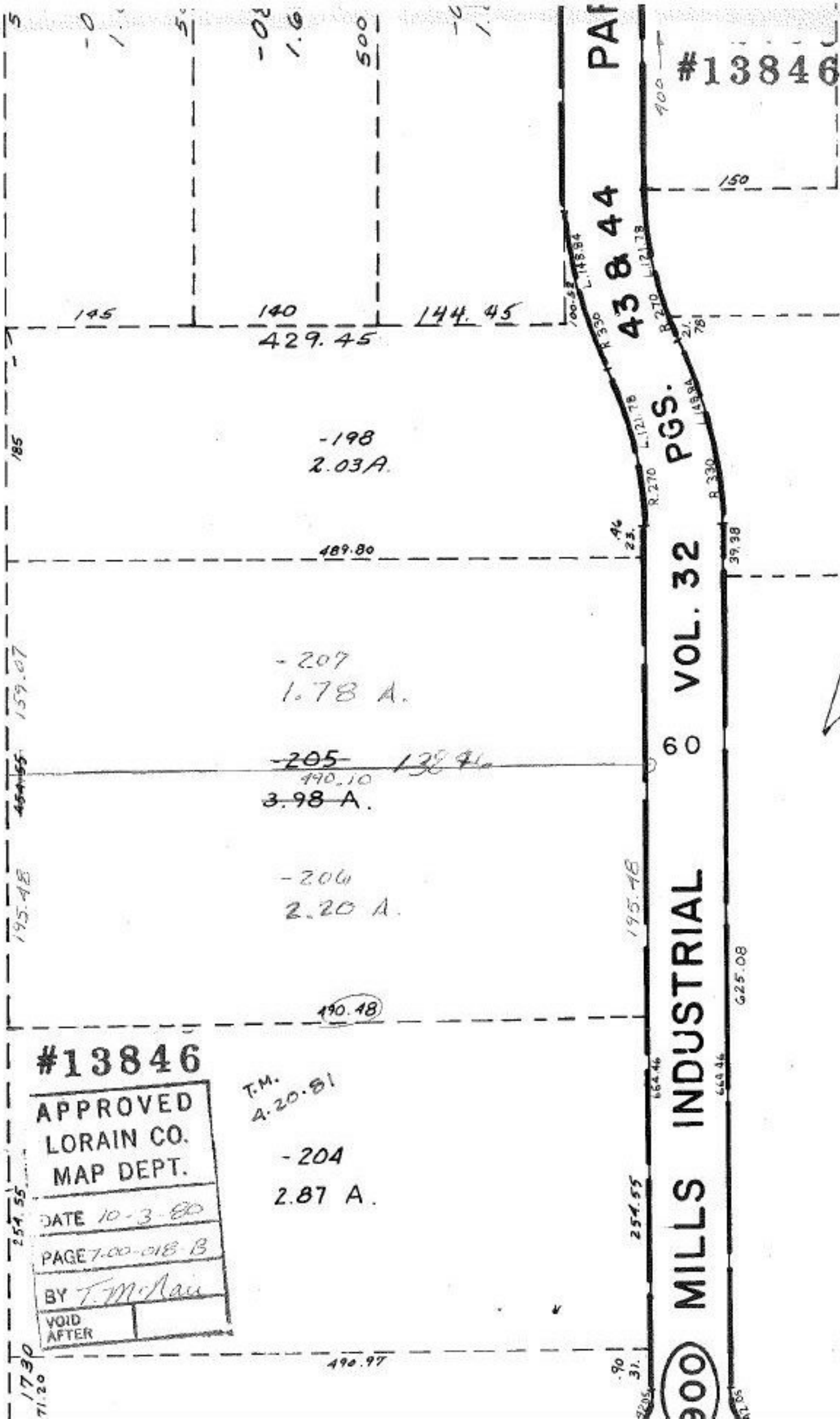


7-00-018-A

3.98
2.20
1.78

454.55
195.48
259.07



#13846

APPROVED
LORAIN CO.
MAP DEPT.

DATE 10-3-80

PAGE 7-00-018-B

BY T. McRau

VOID
AFTER

T.M.
4-20-81

-204
2.87 A.

1730
71.20

254.55

195.48

454.55

159.07

185

5

145

140

144.45

429.45

-198
2.03A.

489.80

-207
1.78 A.

~~-205~~ 138.41
490.10
3.98 A.

-206
2.20 A.

190.48

490.97

PAF

43 & 44

PGS.

VOL. 32

MILLS INDUSTRIAL

900

#13846

400

150

100.53
L. 145.84

R. 330

L. 121.78

R. 270

L. 121.78

46
23

195.48

254.55

90
31

2205

664.46

660.46

625.08

39.38

