

Pt. -004
Pt. 11.00A.

937.82 TO S.R.B3

"COMBINATION ONLY"

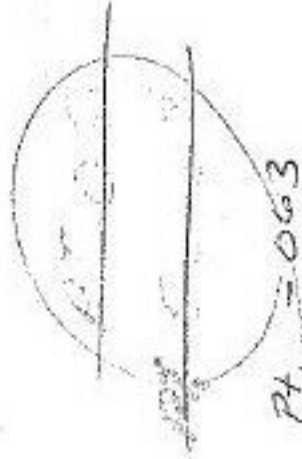
#13832

APPROVED
LORAIN CO.
MAP DEPT.
DATE 9-24-80
PAGE 4-00-016-
BY T. McKain
VOID AFTER

#13836

APPROVED
LORAIN CO.
MAP DEPT.
DATE 9-26-80
PAGE 4-00-016-
BY <i>Carroll</i>
VOID AFTER 13836

ALSO CHANGE
4-00-016-A

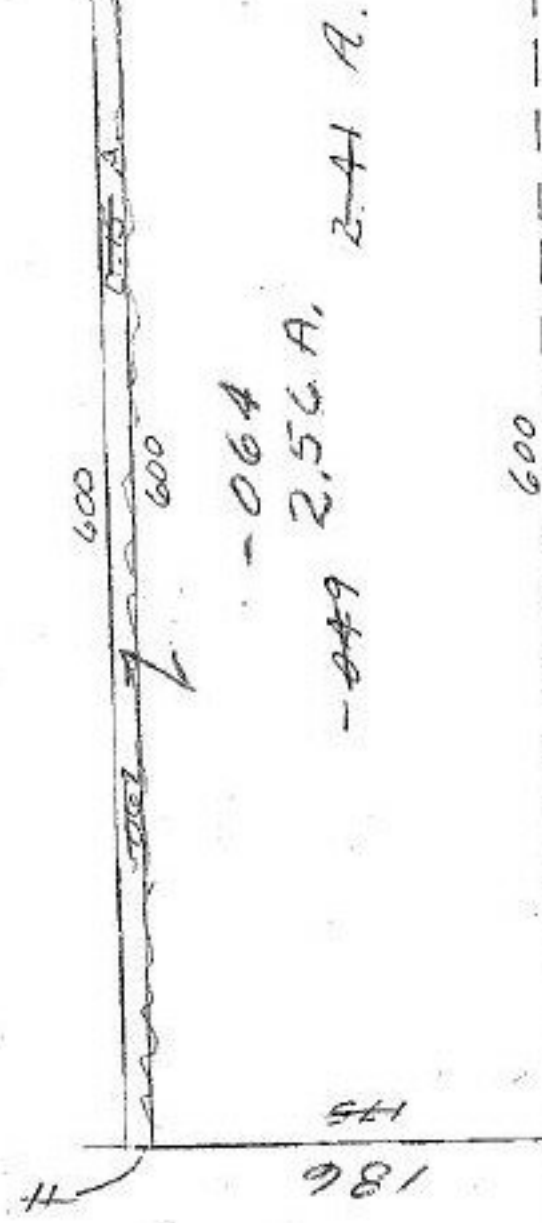


B & A
Carroll

APR 10 1981

56.63
-15
56.48
-15
56.63

101



#13832
#13836

-006
3.06A.