

Pt. -004
Pt. 11.00A

540.95
186
354.95

ALSO CHANGE
A-00-016-A

50
63A

56.63
1.15
58.48
58.48

#13832

APPROVED
LORAIN CO.
MAP DEPT.

DATE 9-24-80

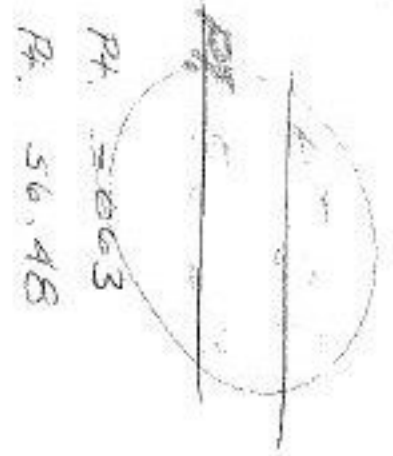
PAGE 4-00-016

BY T. McKain

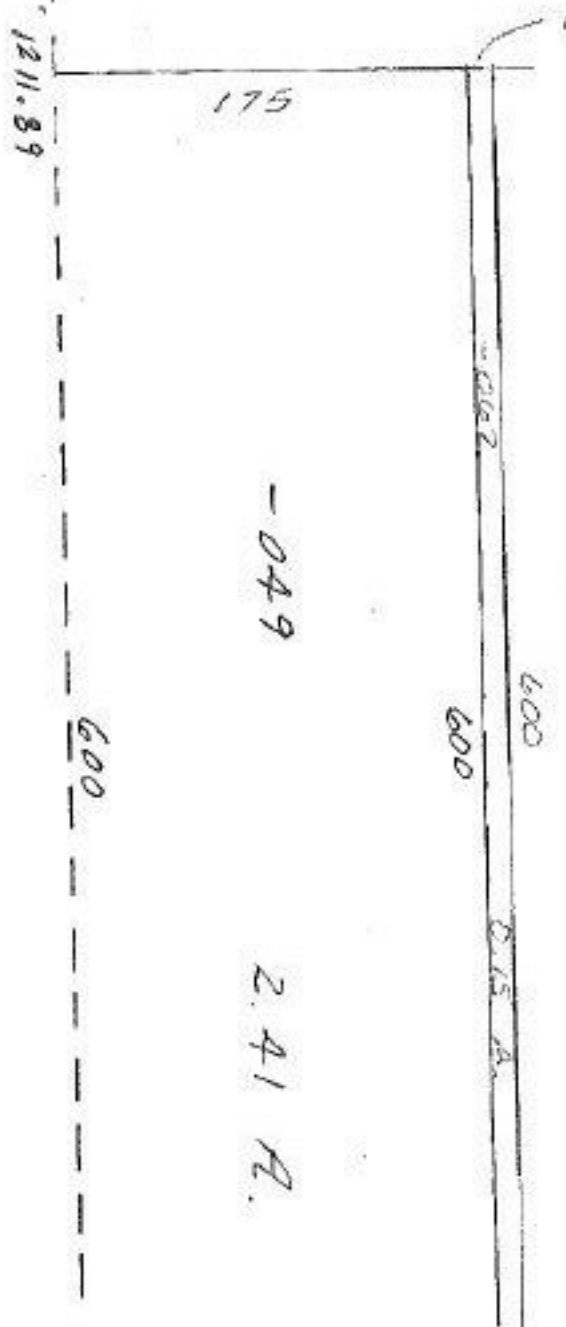
VOID AFTER

APR 10 1981

B & A



101



-006
3.06A

-049

2.41 A.

#13832

937.82 to 2 S.R. 83

354.95