

-001  
55.00 A.

13813

5

-002  
2.00 A.

-003  
42.00 A.

-022  
74.84 A.

4

#13813  
APPROVED  
LORAIN CO.  
MAP DEPT.

DATE 9-15-80

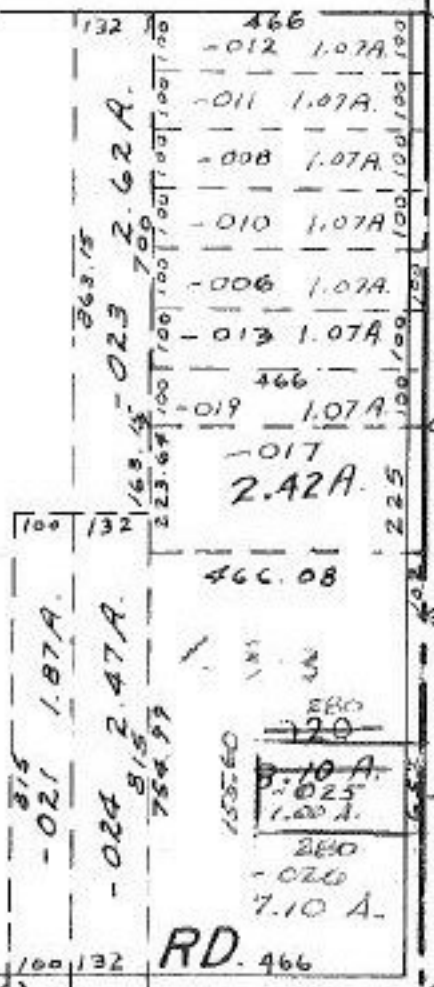
PAGE 21-B

BY *F. M. [Signature]*

VOID AFTER

MAR 23 1981

*[Signature]*



300  
-001  
160 A.  
233

-002  
26.90 A.

-003  
30.00 A.

3

-005  
28.00 A.

75.52  
927.5  
670.89

11