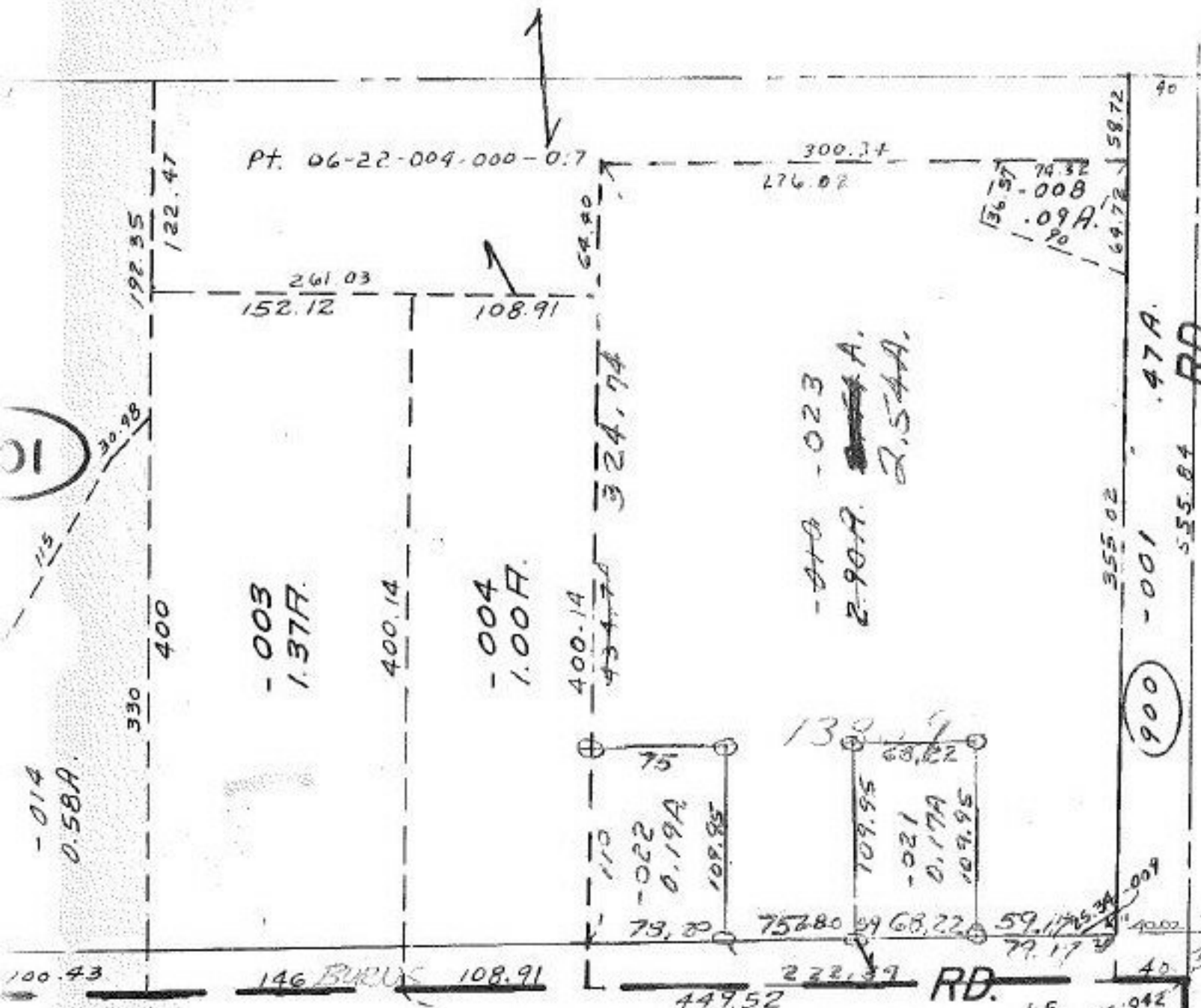


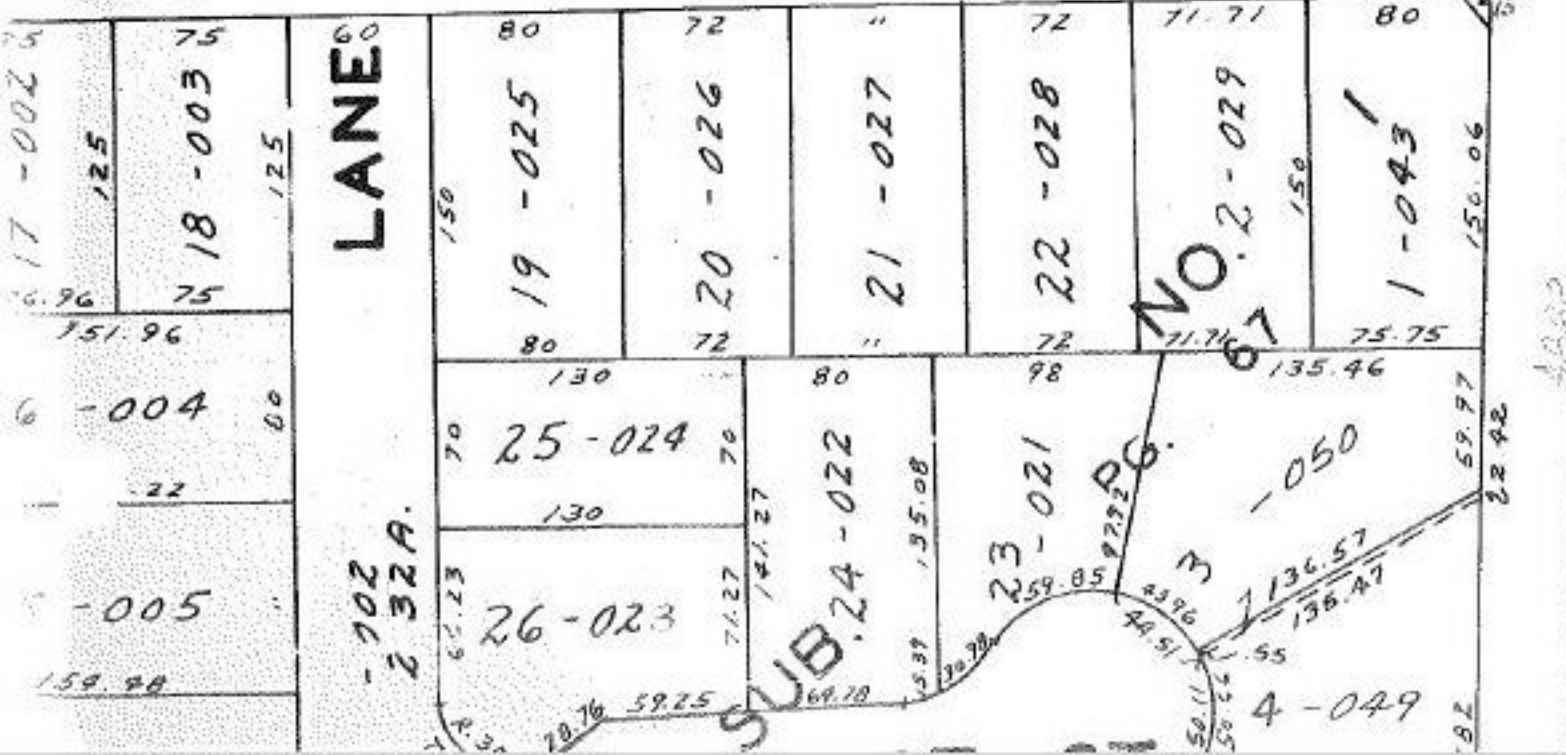
#12800



$\frac{2.17}{0.19}$
 $\frac{0.54}{0.90}$
 $\frac{0.54}{0.90}$
 $\frac{0.54}{0.90}$

T.M.
4-14-81

#13809



APPROVED LORAIN CO. MAP DEPT.	
DATE	9-11-80
PAGE	6-34
BY	<i>Carolyn</i>
VOID AFTER	13809