

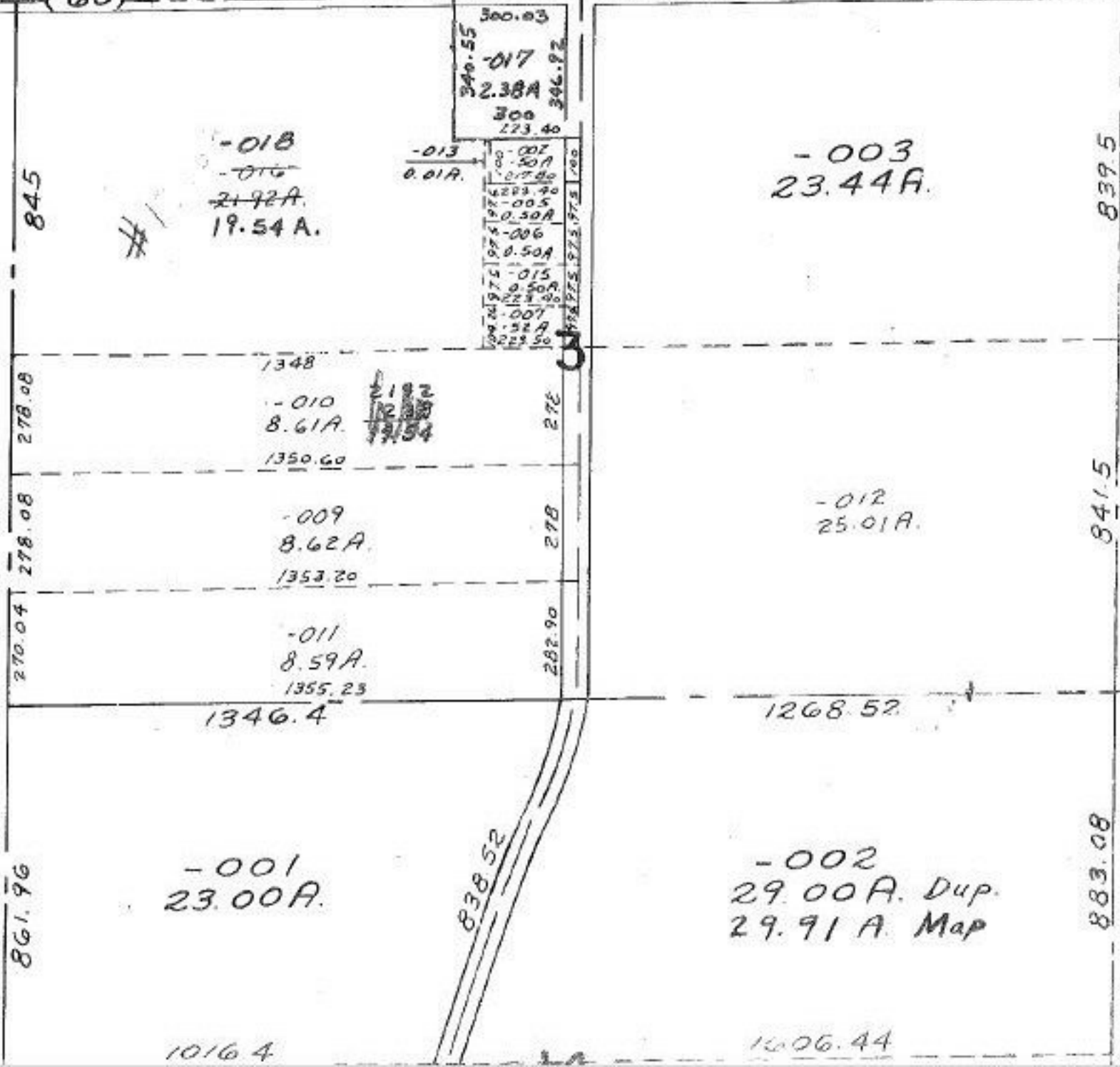
APR 10 1981  
*[Signature]*

-004  
 87.69 A  
 24

#18806  
 APPROVED  
 LORAIN CO.  
 MAP DEPT.  
 DATE 9-11-80  
 PAGE 13-B  
 BY *[Signature]*  
 VOID  
 AFTER



OBERLIN - NORWALK  
 (60)



-002  
 29.00 A. Dup.  
 29.91 A. Map

-001  
 23.00 A.

-003  
 23.44 A.

-018  
 -016  
 21.92 A.  
 19.54 A.

-013  
 0.01 A.

300.03  
 -017  
 2.38 A  
 300  
 273.40  
 -007  
 0.50 A  
 0.17 A  
 -005  
 0.50 A  
 -006  
 0.50 A  
 -015  
 0.50 A  
 0.22 A  
 -007  
 0.50 A  
 0.22 A

-010  
 8.61 A.  
 1350.60

-009  
 8.62 A.  
 1353.20

-011  
 8.59 A.  
 1355.23

-012  
 25.01 A.

1268.52

1346.4

1606.44

1016.4