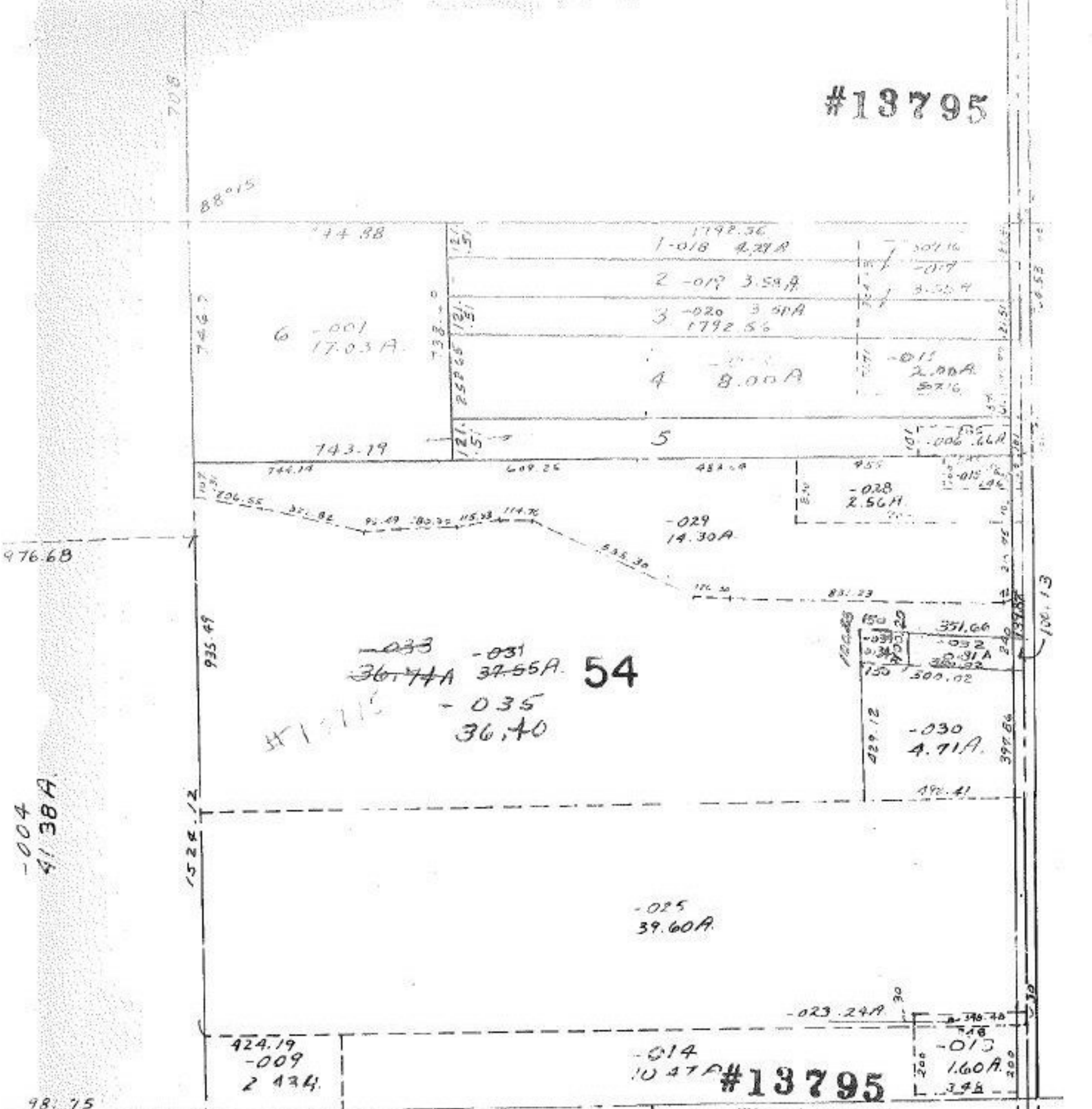


#13795



#13795

APPROVED	
LORAIN CO.	
MAP, DEPT.	
DATE	9-9-80
PAGE	11-B
BY	Carolyn F
VOID	
AFTER	13795

APR 17 1981

*[Signature]*

LAKE

055-B

Pt. -001  
Pt. 19.50A.

-022  
7.60A.

Pt. -041  
Pt. 28.51A

-055  
5.80A

-004  
41.38A

-033 -031  
36.74A 37.55A. 54  
-035  
36.40

-025  
39.60A.

-014  
10.47A

424.19  
-009  
2.134.

-013  
1.60A.

-017  
7.01A

