

AMHERST

9-00-014-B #13781

578.5

500

.81 A

1550

-009
1200 A.

-010
5.20 A.

-011
1.80 A.

127.98

-001
55.71 A.

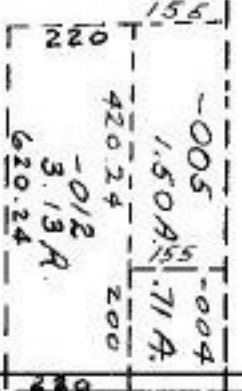
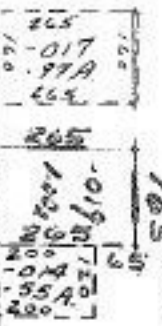
2890

15

-002
44.80 A.

-020
38.74 A.

-018
39.94 A.



RD.

1189.00

475.20
-005
3.00 A.
475.20

APPROVED
LORAIN CO.
MAP DEPT.
DATE 8-29-80
PAGE 9-B
BY <i>Carroll</i>
VOID
AFTER 13781

#13781

M