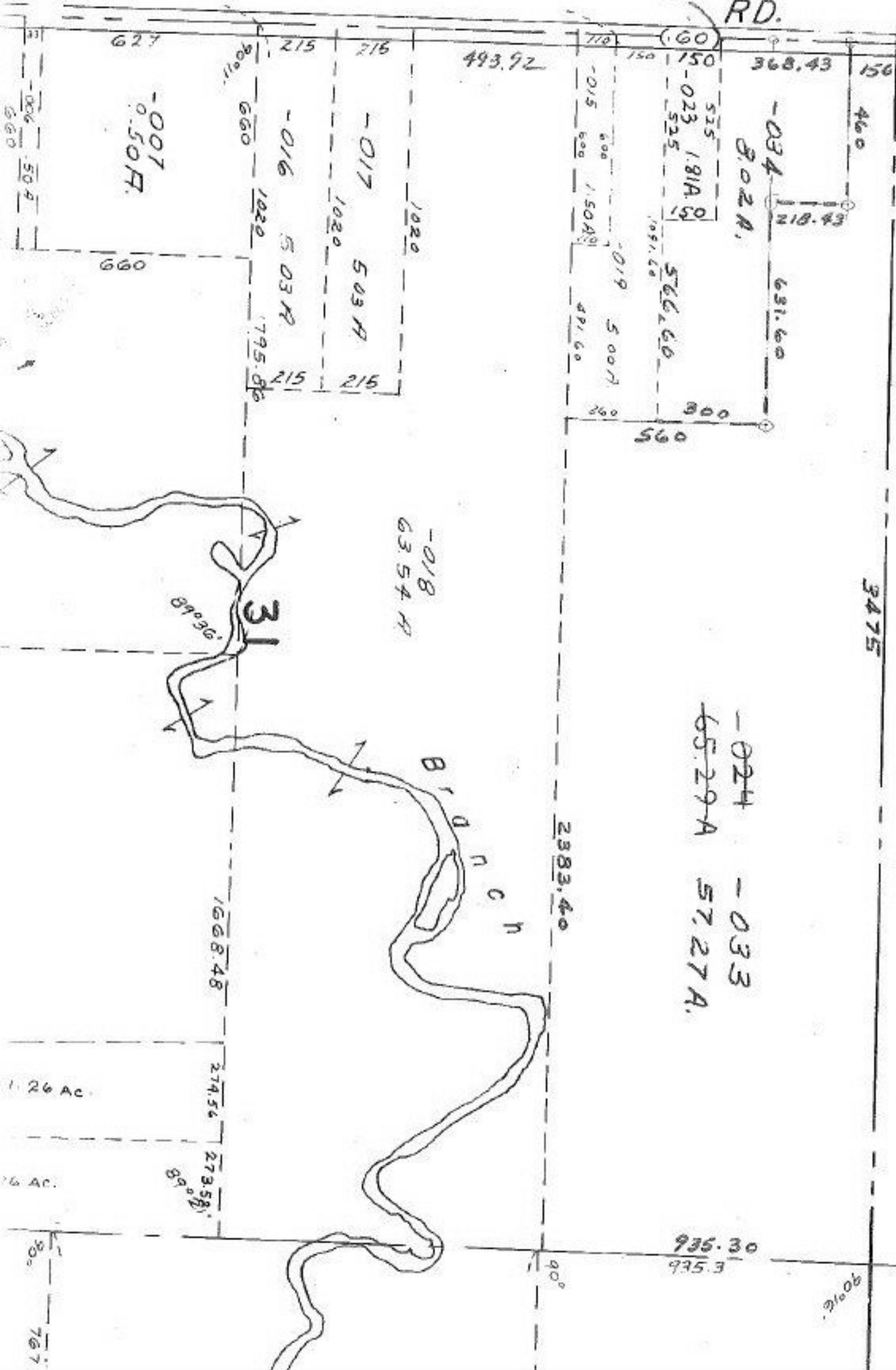


#13776

2881.90

3181.70

RD.



#13776

APPROVED LORAIN CO. MAP DEPT.	
DATE	8-28-80
PAGE	18-B
BY	Carlynn A
VOID AFTER	13776

MAR 23 1981



SEE 14-F

-024
65.29 A

-033
57.27 A.

-018
63.54 A

-007
0.50 A.

-016
5.03 A

-017
5.03 A

-019
5.00 A

-034
3.02 A.

-023
1.81 A.

1.26 Ac.

1.26 Ac.

30°

767

90°

90°

935.30
935.3

1668.48

274.54

273.58

2383.40

3475

493.92

368.43

156.87

460

631.60

800

260

710

150

150

515

525

1.81 A.

566.60

1091.60

566.60

566.60

566.60

566.60

566.60

566.60

566.60

566.60

566.60

566.60

566.60

566.60

566.60

566.60

566.60

566.60

566.60

566.60

566.60

566.60

566.60

566.60

566.60

566.60

566.60

566.60

566.60

566.60

900

660

1020

1020

1020

1020

1020

1020

1020

1020

1020

1020

1020

1020

1020

1020

1020

1020

1020

1020

1020

1020

1020

1020

1020

1020

1020

1020

1020

1020

1020

1020

1020

1020

1020