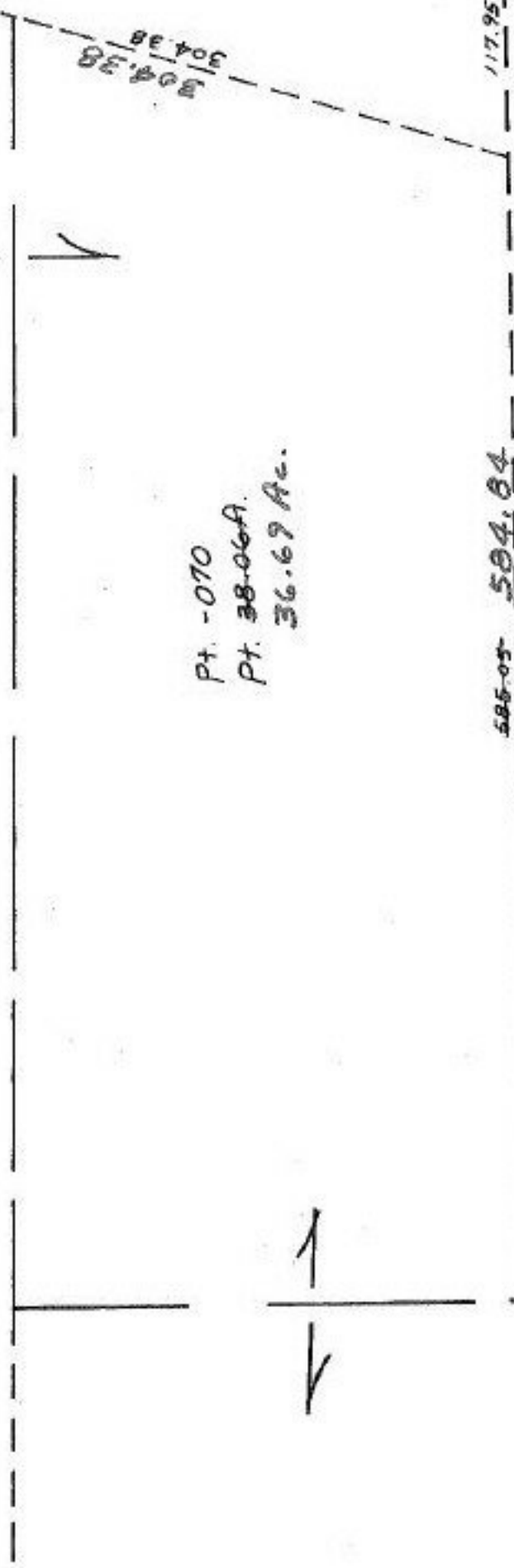


SEE

4-00-012-B



Pt. -070
 Pt. 38-06A.
 36.67 Ac.

#13754
 APPROVED
 LORAIN CO.
 MAP DEPT.
 DATE 8-14-80
 PAGE 4-00-012-F
 BY *Robert*

APR 10 1981



-062
 9.47A.

-071
 1.71A.

