

#18735

APPROVED.  
LORAIN CO.  
MAP DEPT.

DATE 8-11-80

PAGE 6-40

BY *[Signature]*

VOID

5

MAP CORR.  
ONLY.

T.M.  
4-14-81

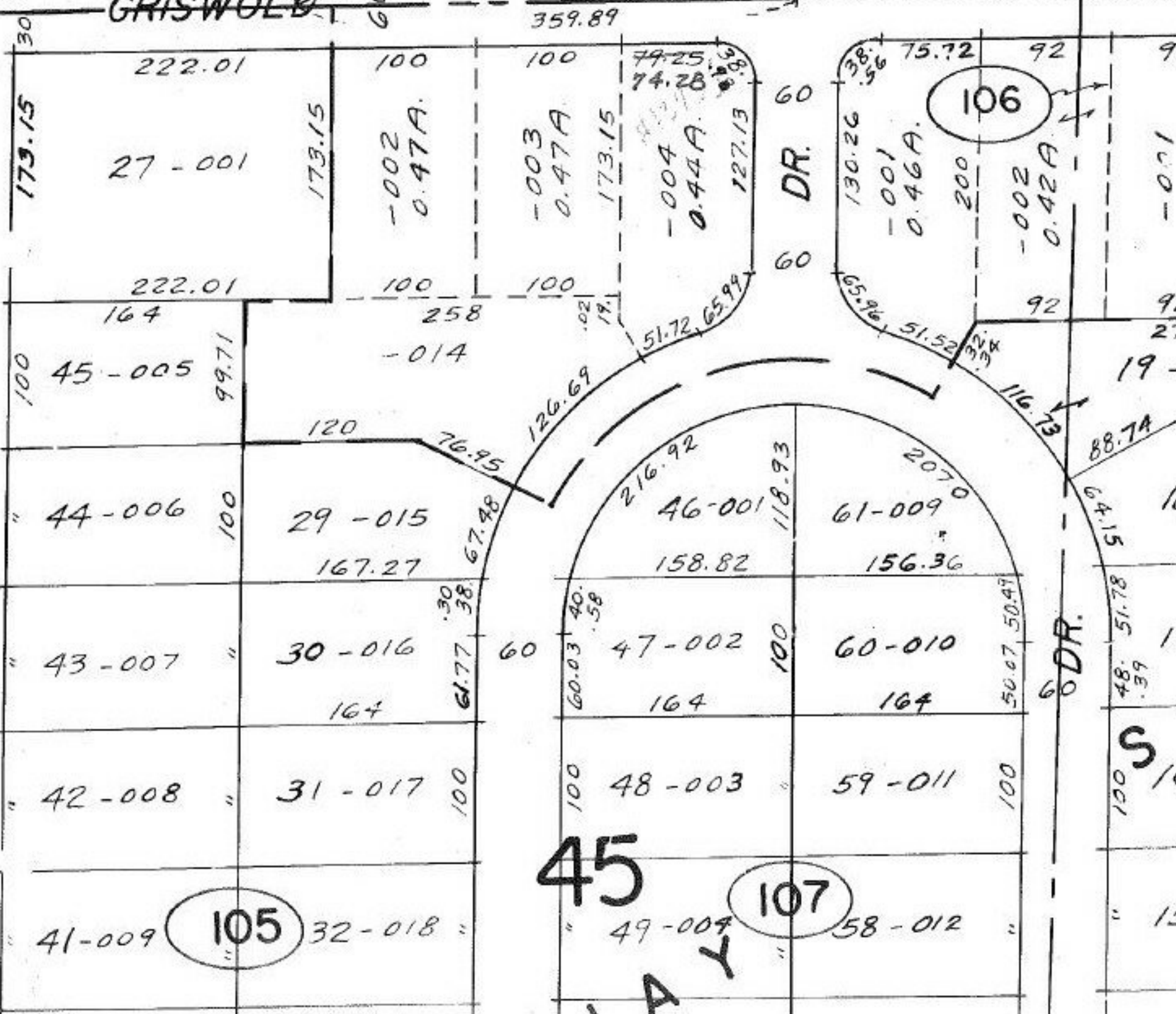
MURRAY RIDGE

88° 24'

SEE DEED VOL. 1043 PG. 804

222.12

GRISWOLD



45

107

MURRAY

S

1153.18