

-001
64.00A.

#13720

-002
70.81A.

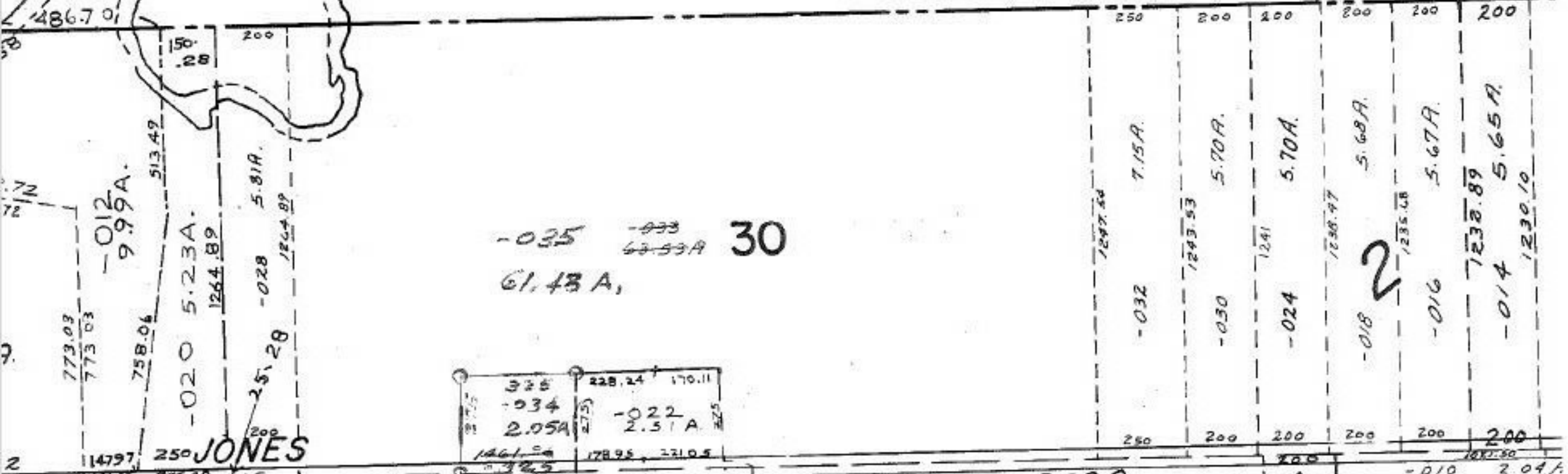
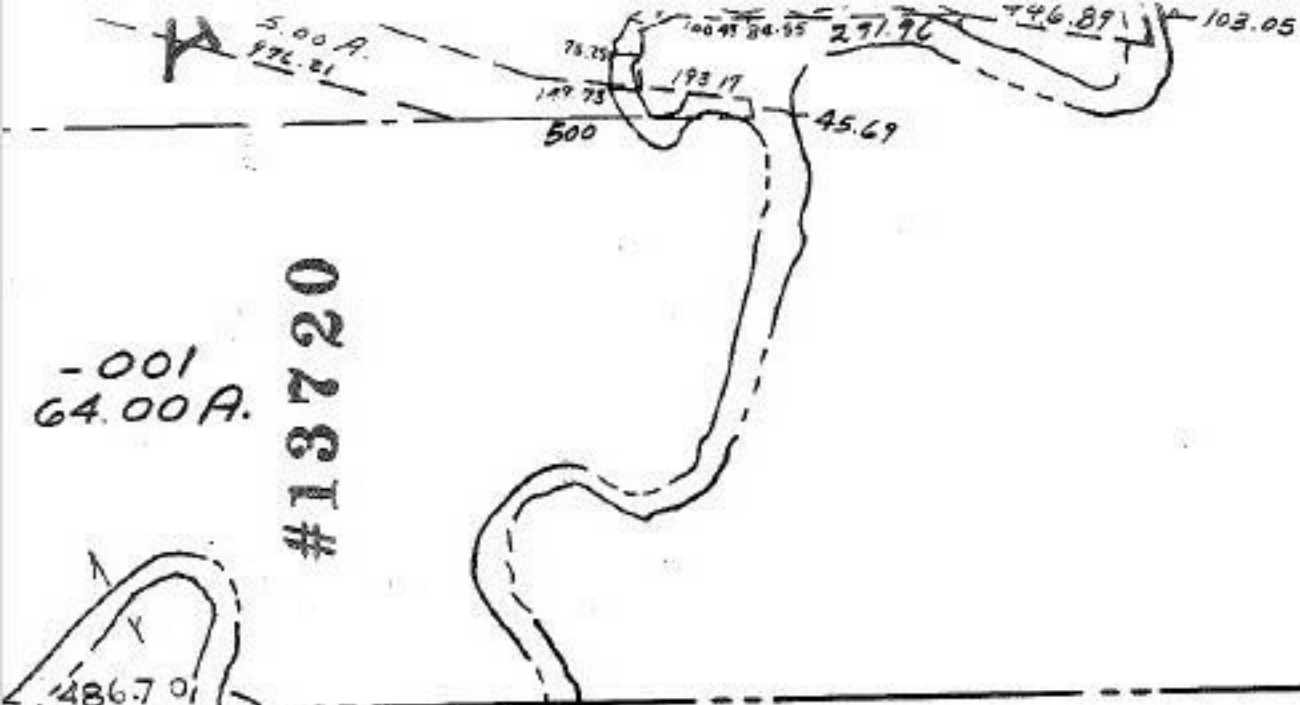
#13720

-003
37.75

3

APPROVED LORAIN CO. MAP DEPT.	
DATE	7-30-80
PAGE	19-4
BY	<i>Chapman</i>
VOID AFTER	13720

MAR 23 1981
JS



-035
61.43A, 30

325	228.24	170.11
-034		-022
2.05A	275	2.51A
1461.00	178.95	221.05
325		

JONES RD.

1199.86

-006
38.53A.

29 T

APPROVED
LORAIN CO 6900 -
69.56E
MAP DEPT.
DATE
PAGE
BY
VOID AFTER

-008
400A

719.90

1316.50

-016
9.71A.

341.2

-014
24.77A.