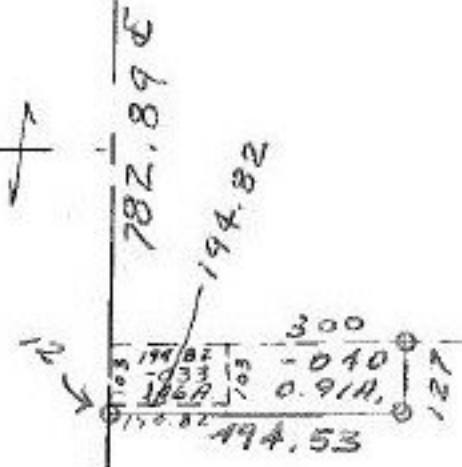


00-011

SEE 7-00

SEE #13694

TU



2

03  
Pt - 026  
Pt 54.76A

-017  
42.54A.

-041  
41.63A.

102

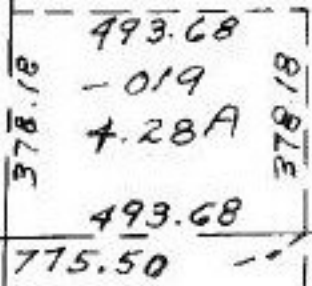
Pt - 022  
Pt 29.70A  
#13694  
Pt - 024  
Pt 59.30A

APPROVED	
LORAIN CO.	
MAP DEPT.	
DATE	7-11-30
PAGE	7-H 2.00A
BY	Carolyn F
VOID AFTER	#13694

-018  
22.00A.

-020  
7.50A

T.M.  
7.28.80  
-021  
7.50A



416.46 450.12

909.48

775.50

495

890.52

90°28'

692.51

6