

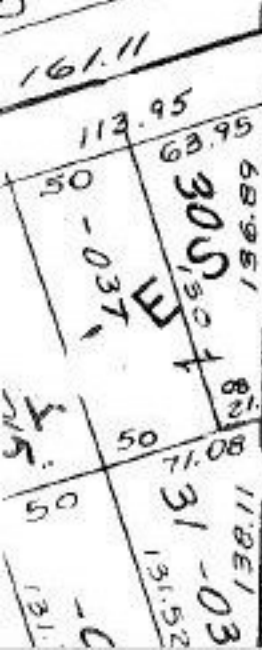
-020  
2.00A  
794.30  
562.5

-021  
1.19A  
494.30

-022  
92A

-023  
128A

-024 Pt. -085  
129A Pt. 32.46 Ac.



108

-035  
55A  
340

-041  
1.33A  
T.M.  
7-23-80

#13681

APPROVED
LORAIN CO.
MAP DEPT.
DATE 7-8-80
PAGE 4 of 6-B
BY <i>[Signature]</i>

RD. 0

RD. 0  
SEE 4-00-006-C RD.

BLVD.